

climate update

Kathie Dello

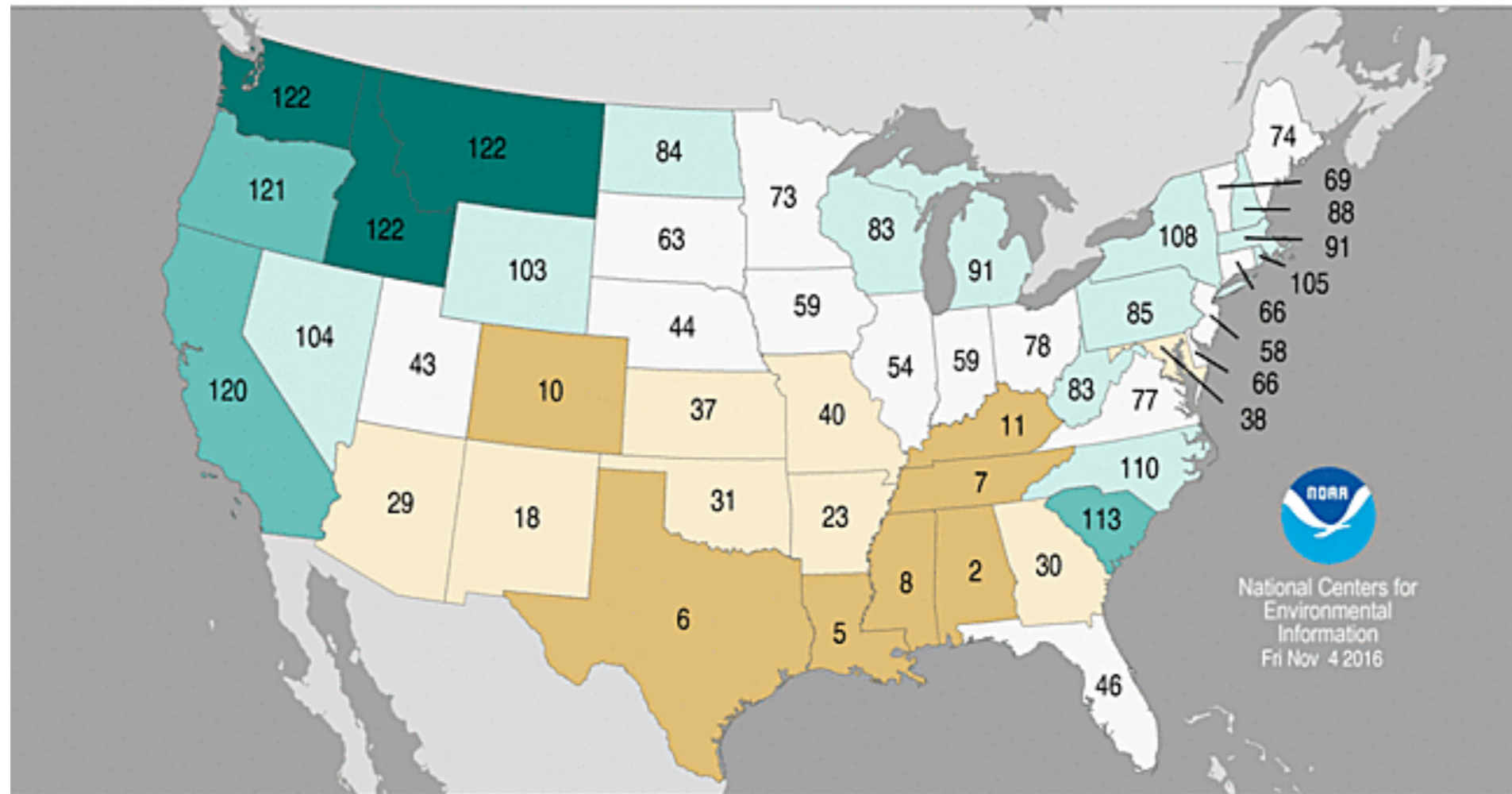
Climate Impacts Research Consortium

Oregon State University

Statewide Precipitation Ranks

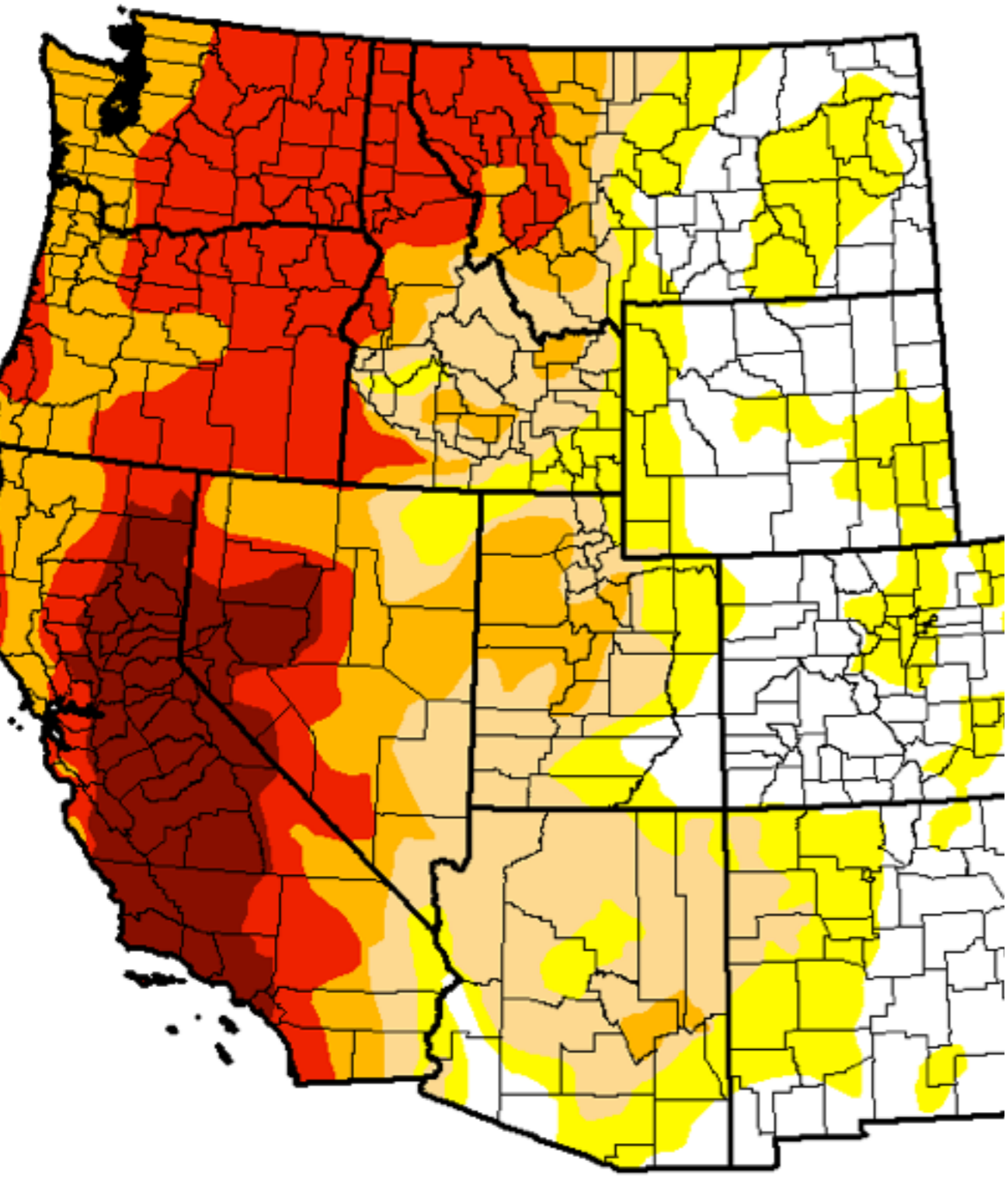
October 2016

Period: 1895-2016



National Centers for
Environmental
Information
Fri Nov 4 2016

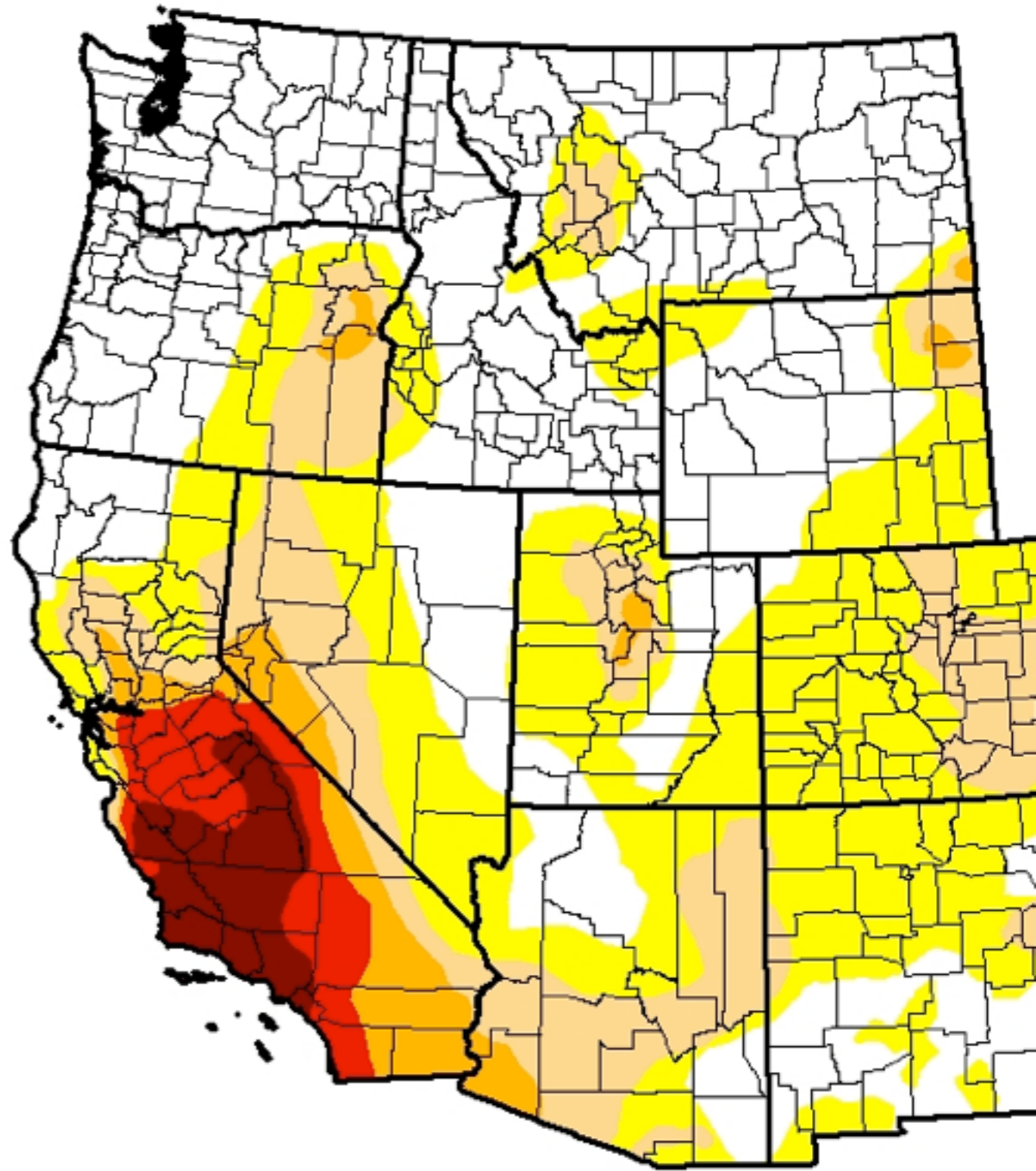
U.S. Drought Monitor
West



September 2015

U.S. Drought Monitor

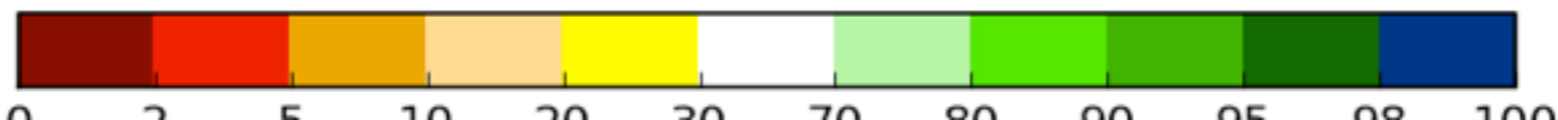
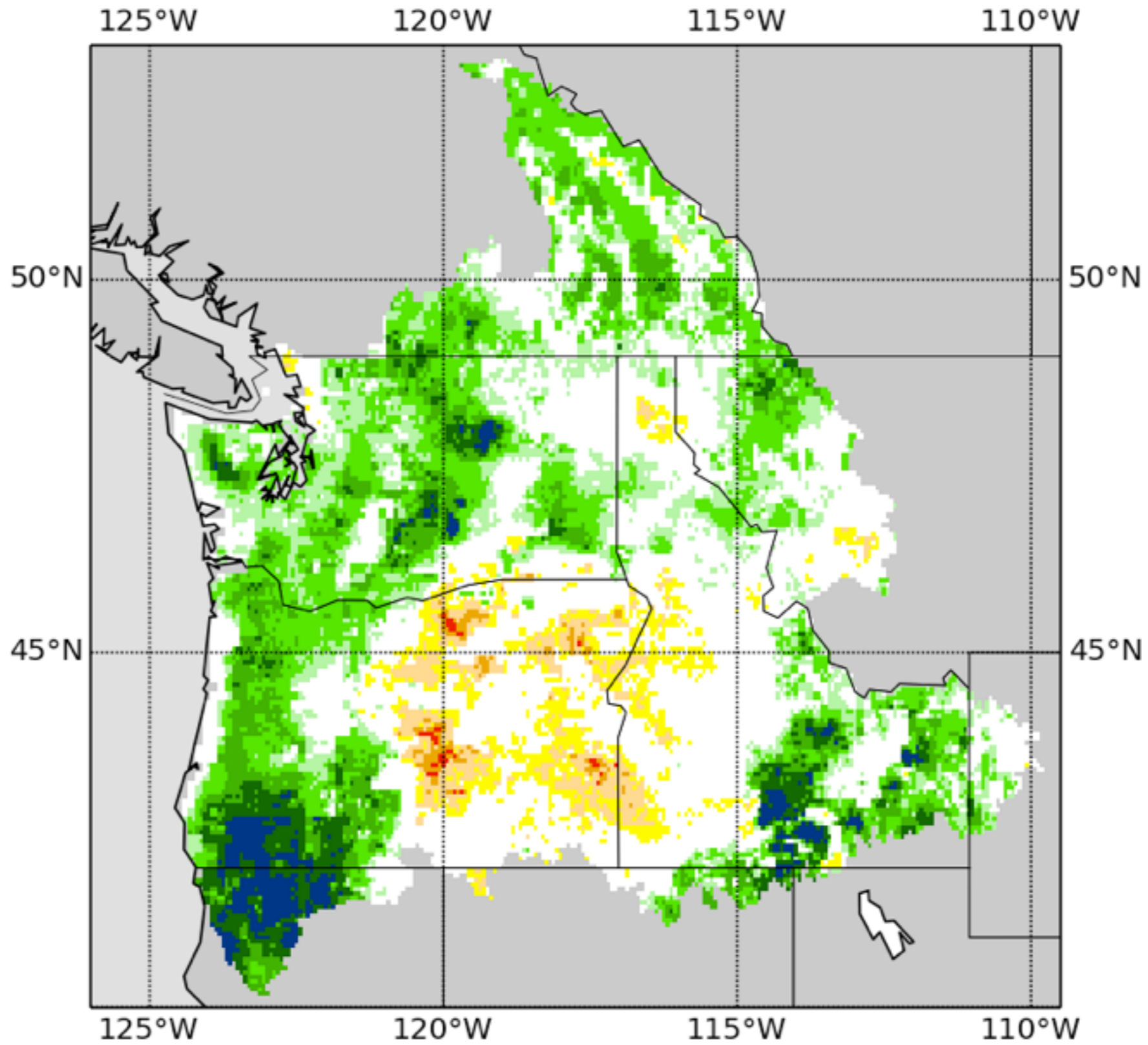
West



November 2016

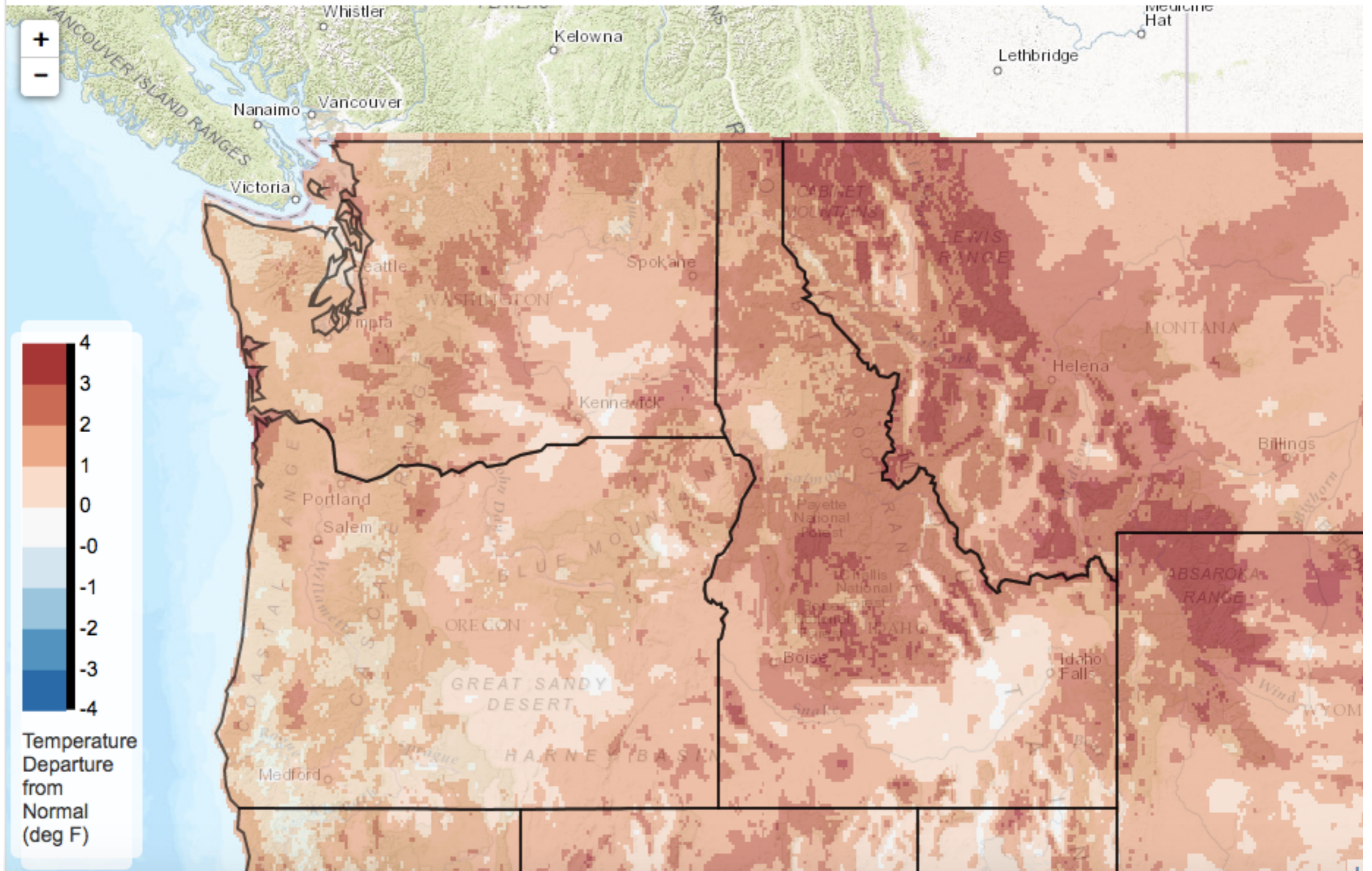
Total Moisture Percentile

2016--11--08



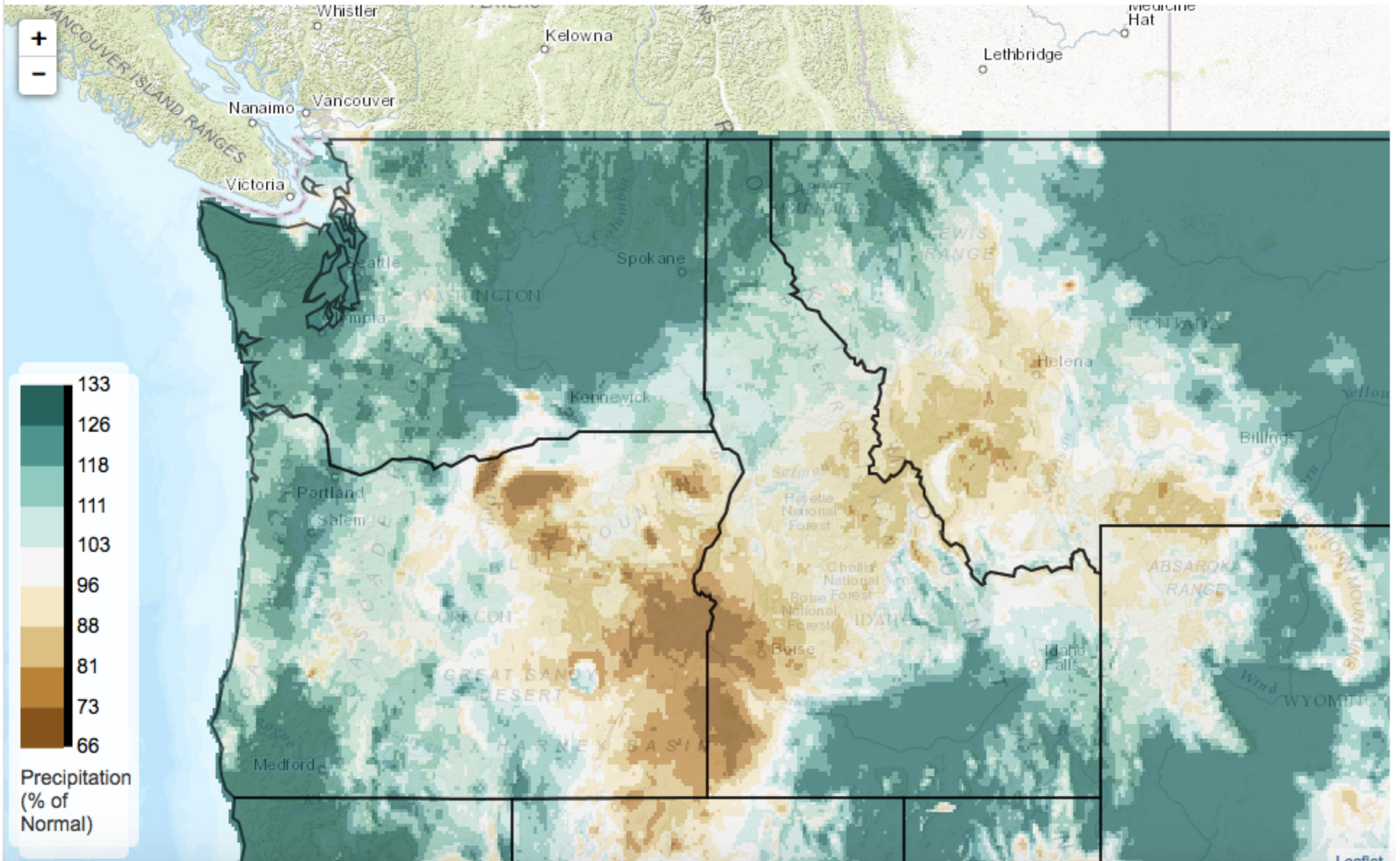
Current Calendar Year Air Temperature (Departure from Normal, Degrees F)

Data Source: [gridMET 4-km dataset \(U Idaho\)](#), 2016/01/01 - 2016/11/08



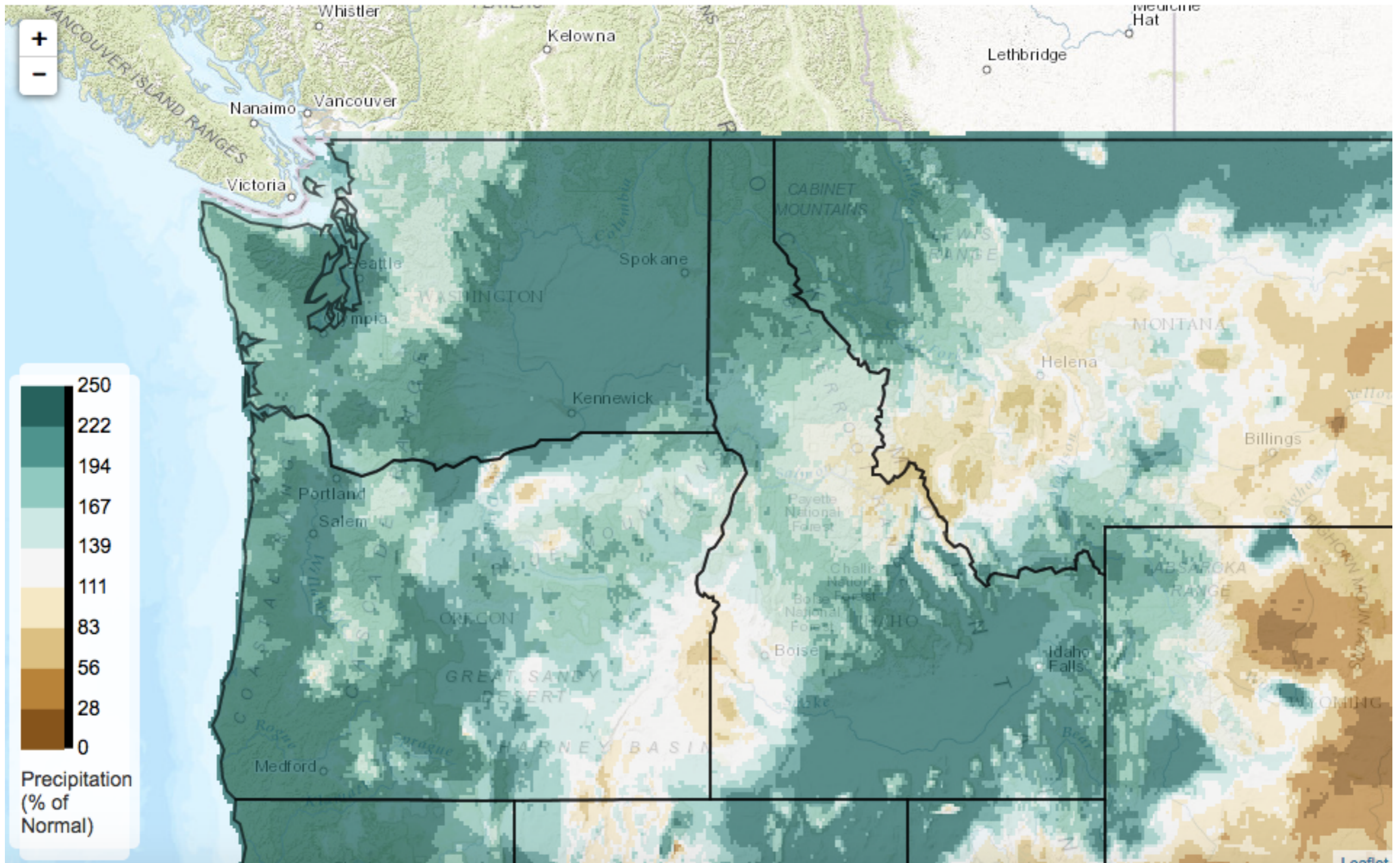
Current Calendar Year Precipitation (% of Normal)

Data Source: [gridMET 4-km dataset \(U Idaho\)](#), 2016/01/01 - 2016/11/08



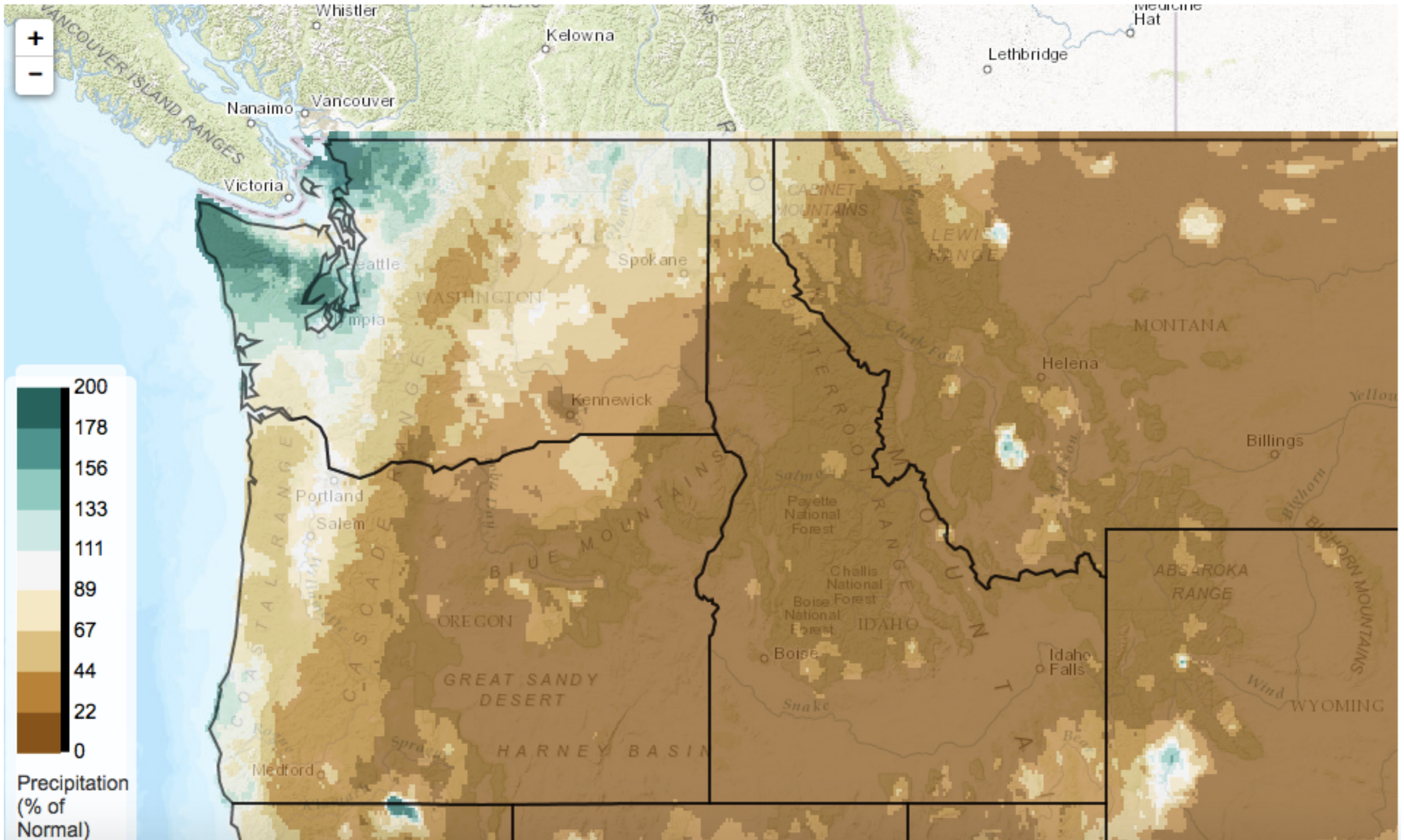
Last 30 Days Precipitation (% of Normal)

Data Source: [gridMET 4-km dataset \(U Idaho\)](#), 2016/10/10 - 2016/11/08



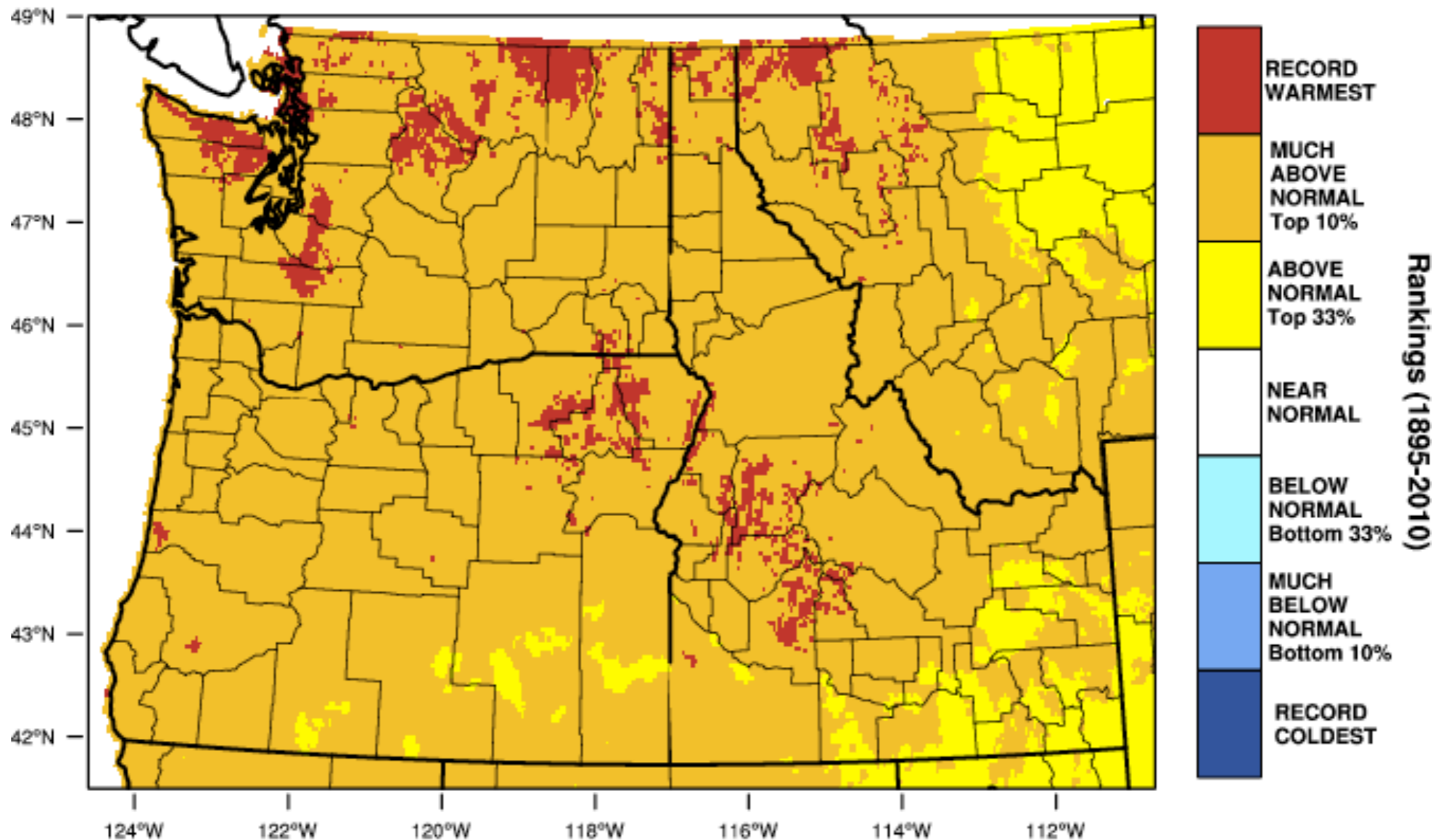
Last 7 Days Precipitation (% of Normal)

Data Source: [gridMET 4-km dataset \(U Idaho\)](#), 2016/11/02 - 2016/11/08



Pacific Northwest - Mean Temperature

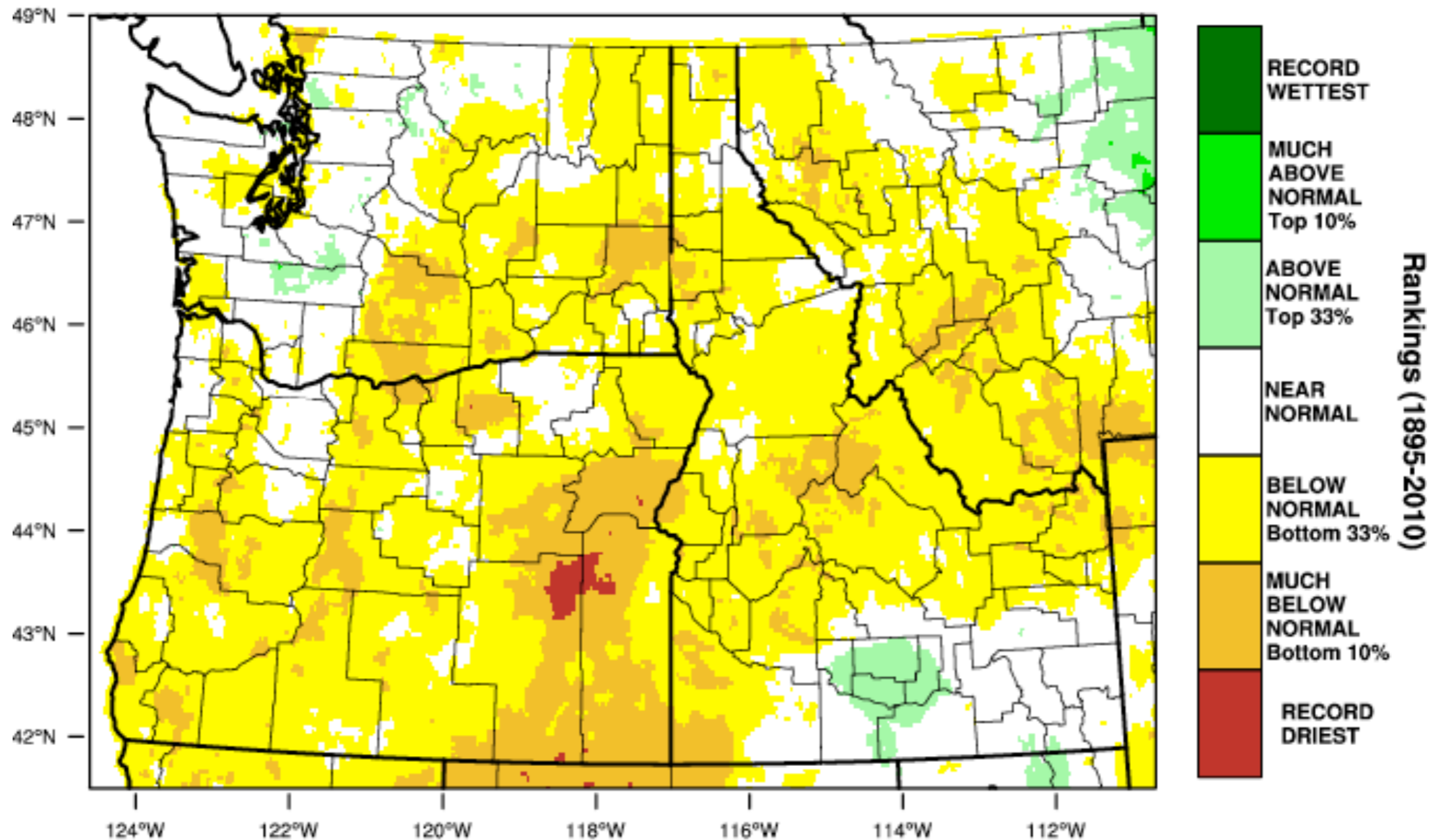
April 2016 Percentile



WestWide Drought Tracker - U Idaho/WRCC Data Source - PRISM (Prelim), created 7 NOV 2016

Pacific Northwest - Precipitation

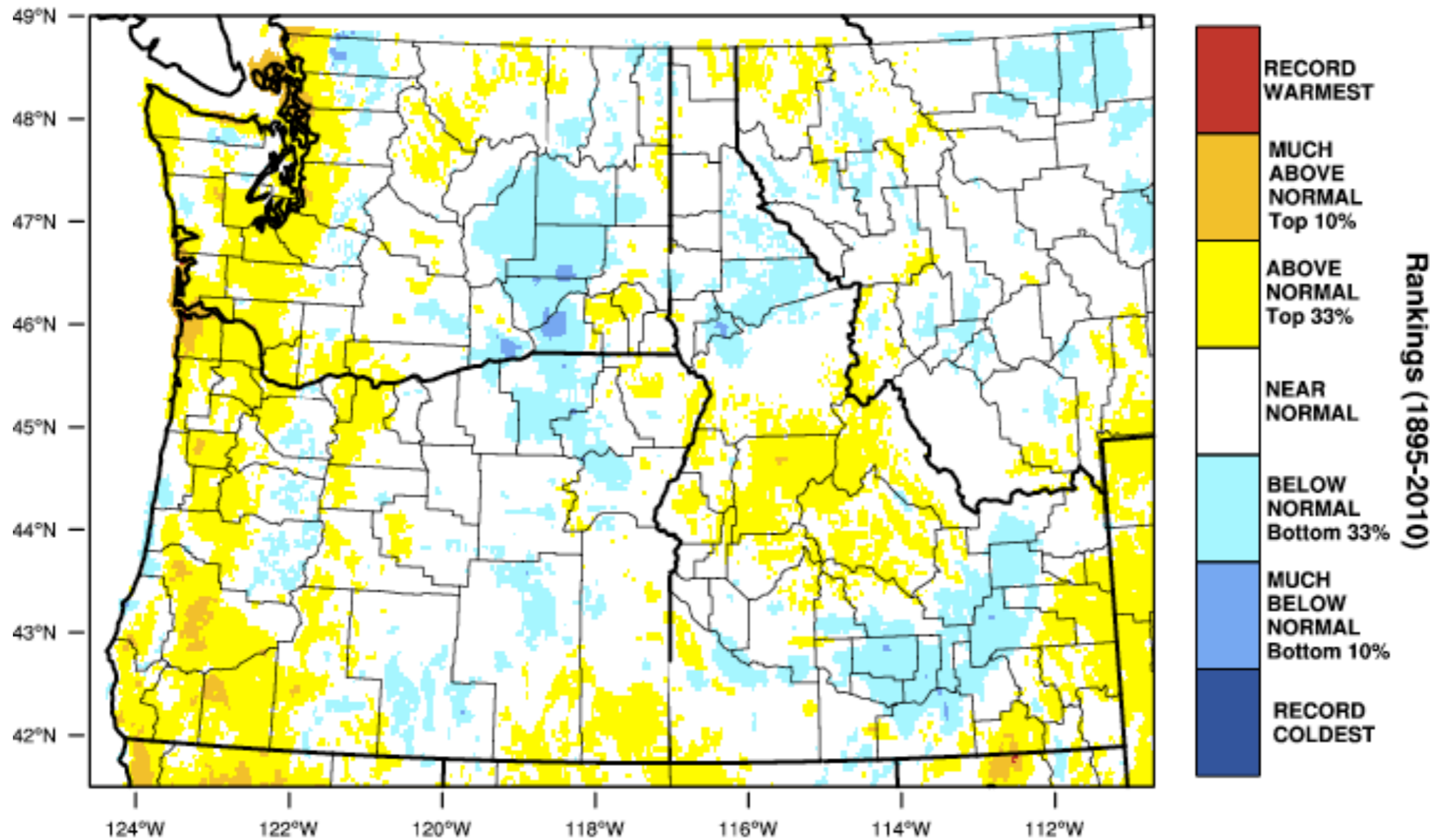
June-September 2016 Percentile



WestWide Drought Tracker - U Idaho/WRCC Data Source - PRISM (Prelim), created 16 OCT 2016

Pacific Northwest - Mean Temperature

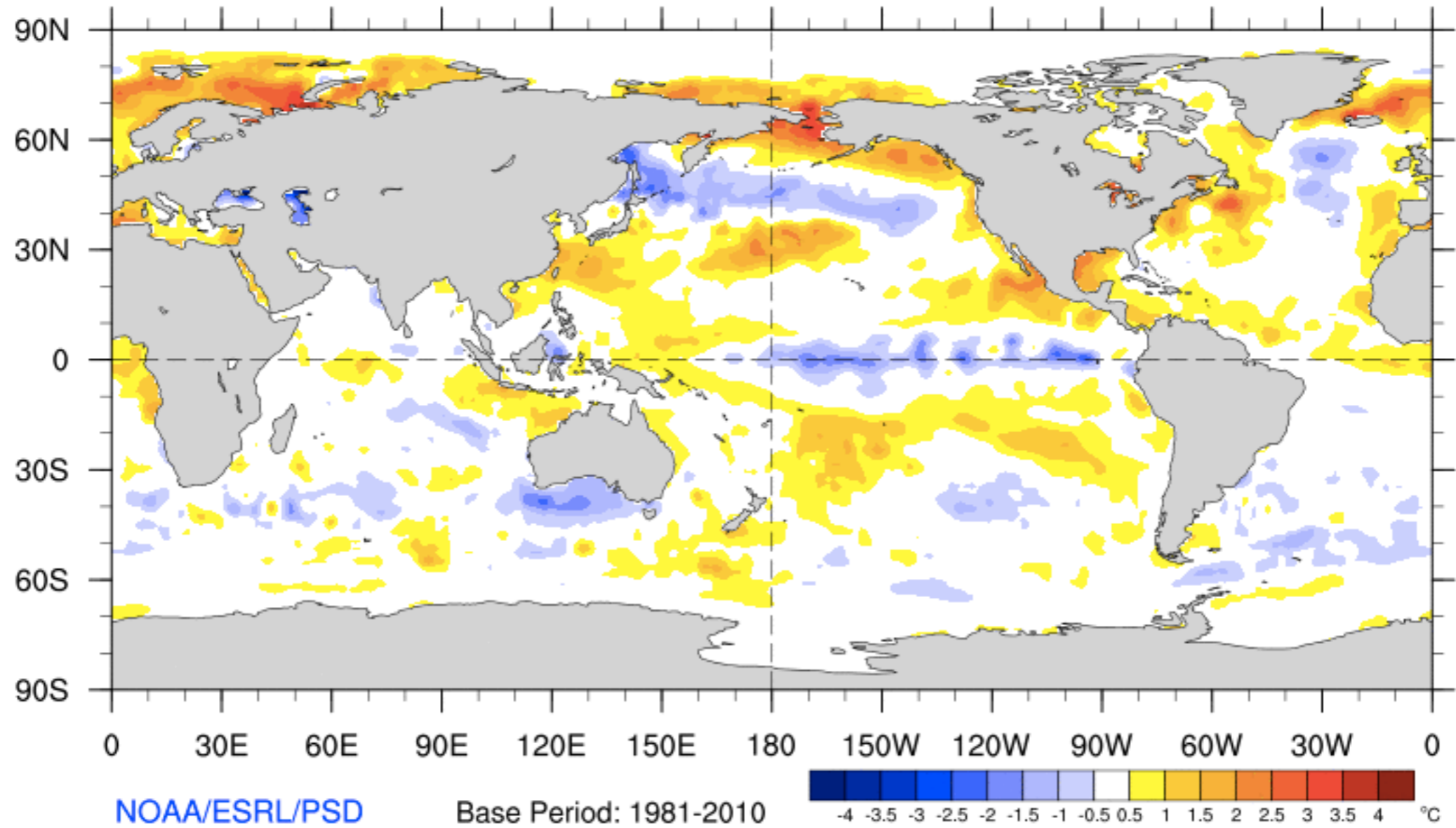
July-September 2016 Percentile



WestWide Drought Tracker - U Idaho/WRCC Data Source - PRISM (Prelim), created 16 OCT 2016

Weekly SST Anomaly

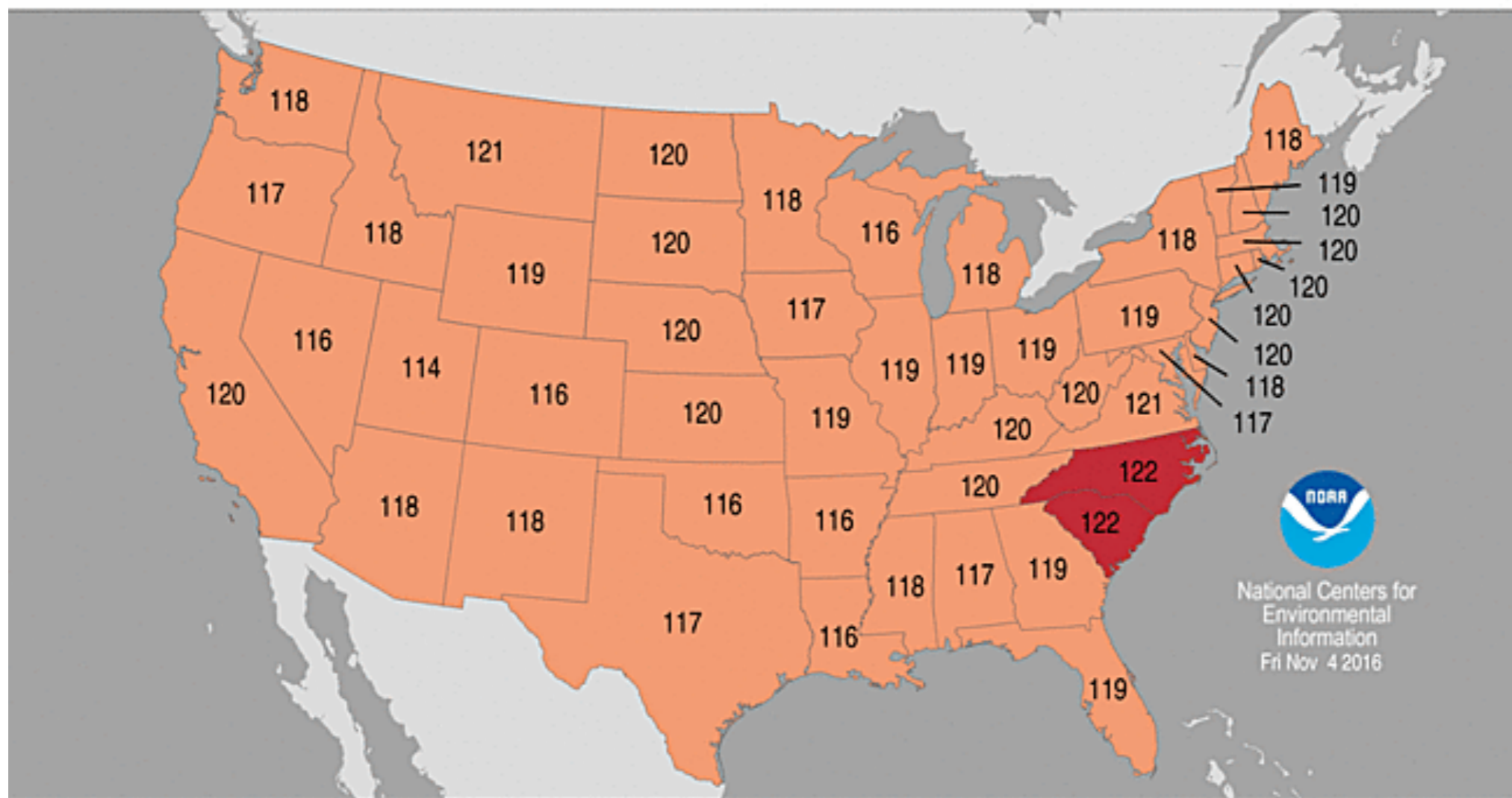
2016/10/30 - 2016/11/05



Statewide Average Temperature Ranks

January–October 2016

Period: 1895–2016



National Centers for
Environmental
Information
Fri Nov 4 2016

Record
Coldest
(1)

Much
Below
Average

Below
Average

Near
Average

Above
Average

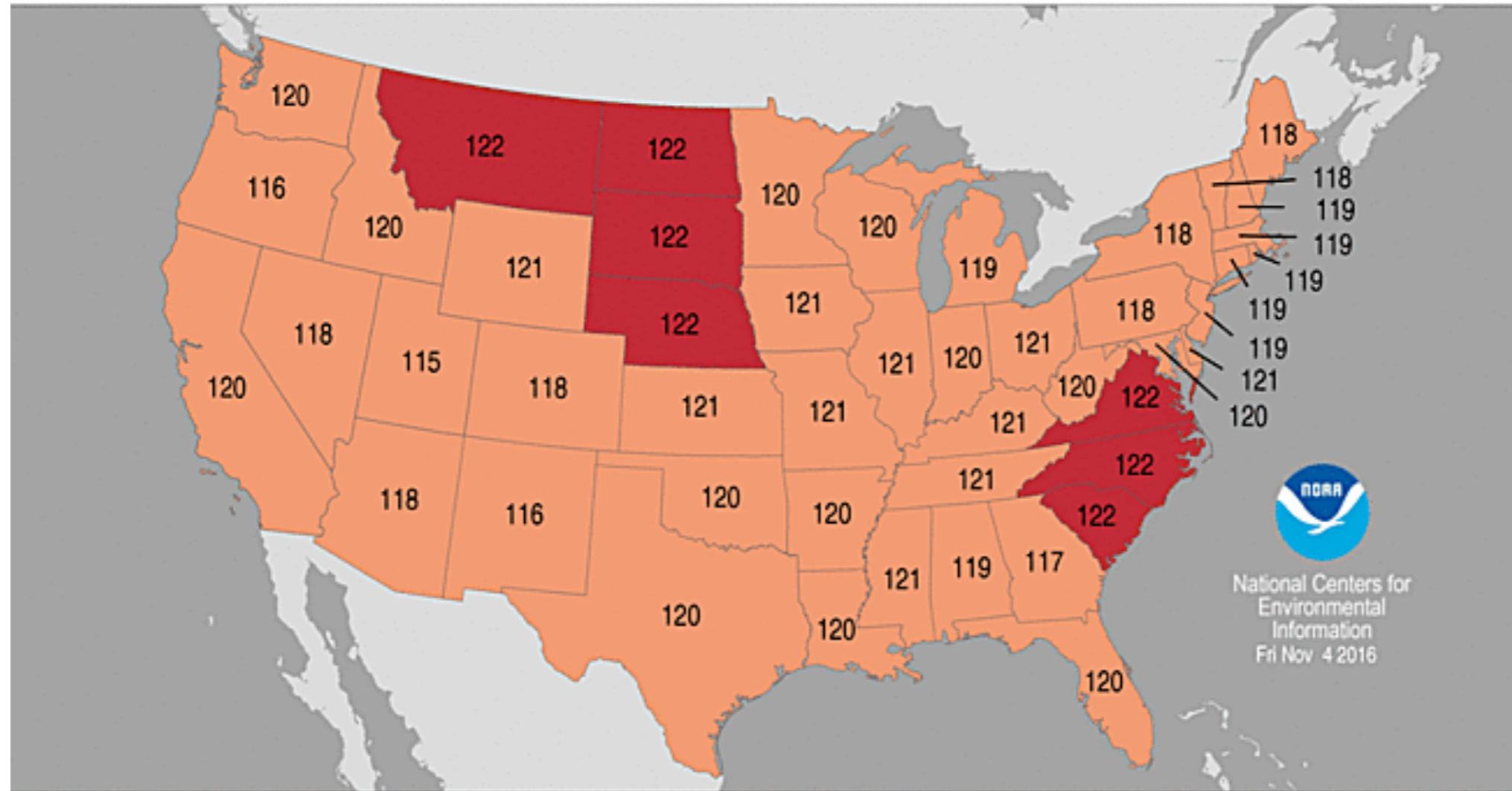
Much
Above
Average

Record
Warmest
(122)

Statewide Minimum Temperature Ranks

January–October 2016

Period: 1895–2016



National Centers for
Environmental
Information
Fri Nov 4 2016

Record
Coldest
(1)

Much
Below
Average

Below
Average

Near
Average

Above
Average

Much
Above
Average

Record
Warmest
(122)

thank you!

- Kathie Dello
- kdello@coas.oregonstate.edu