

Idaho Power's Fall Chinook Flow Program



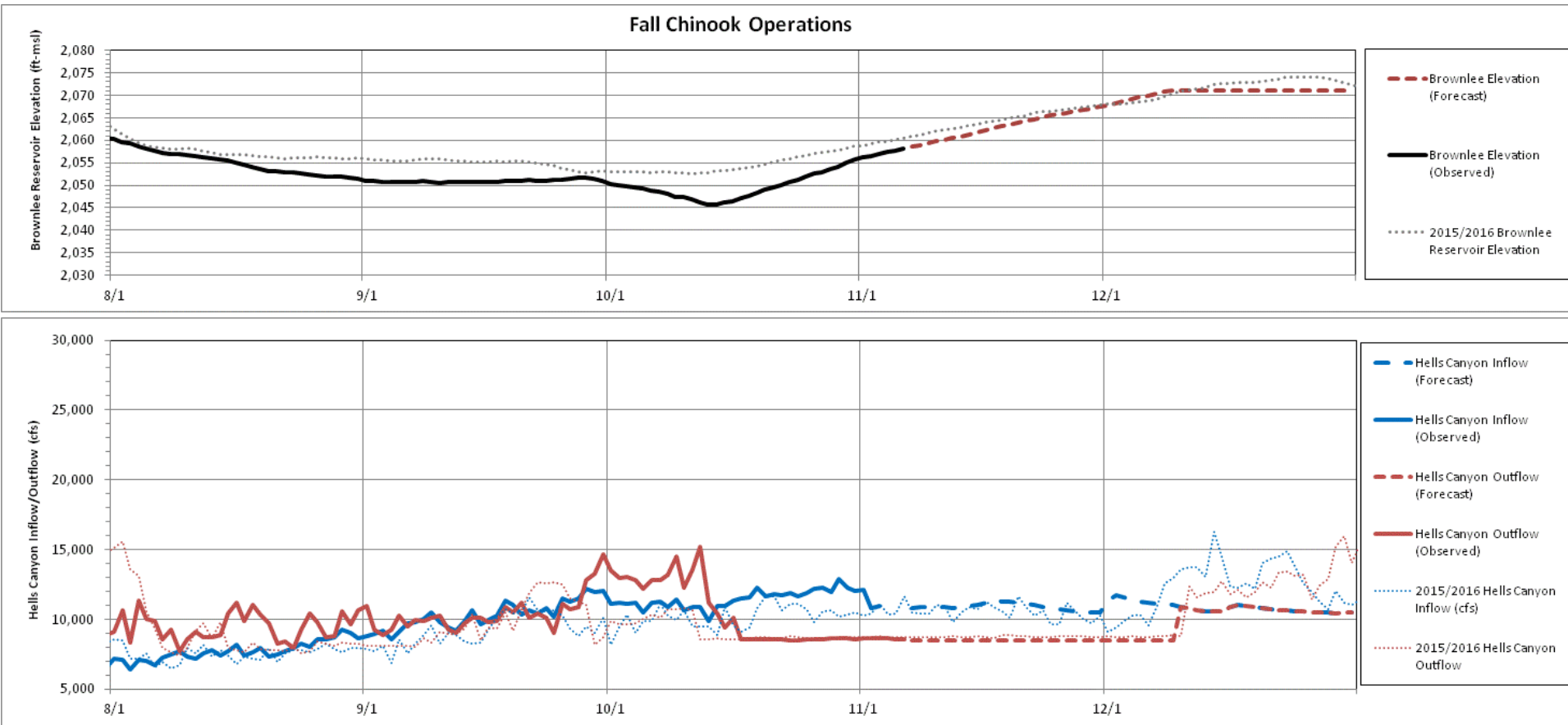
2017 Idaho Water Supply Outlook
November 10, 2016

Idaho Power's Fall Chinook Program

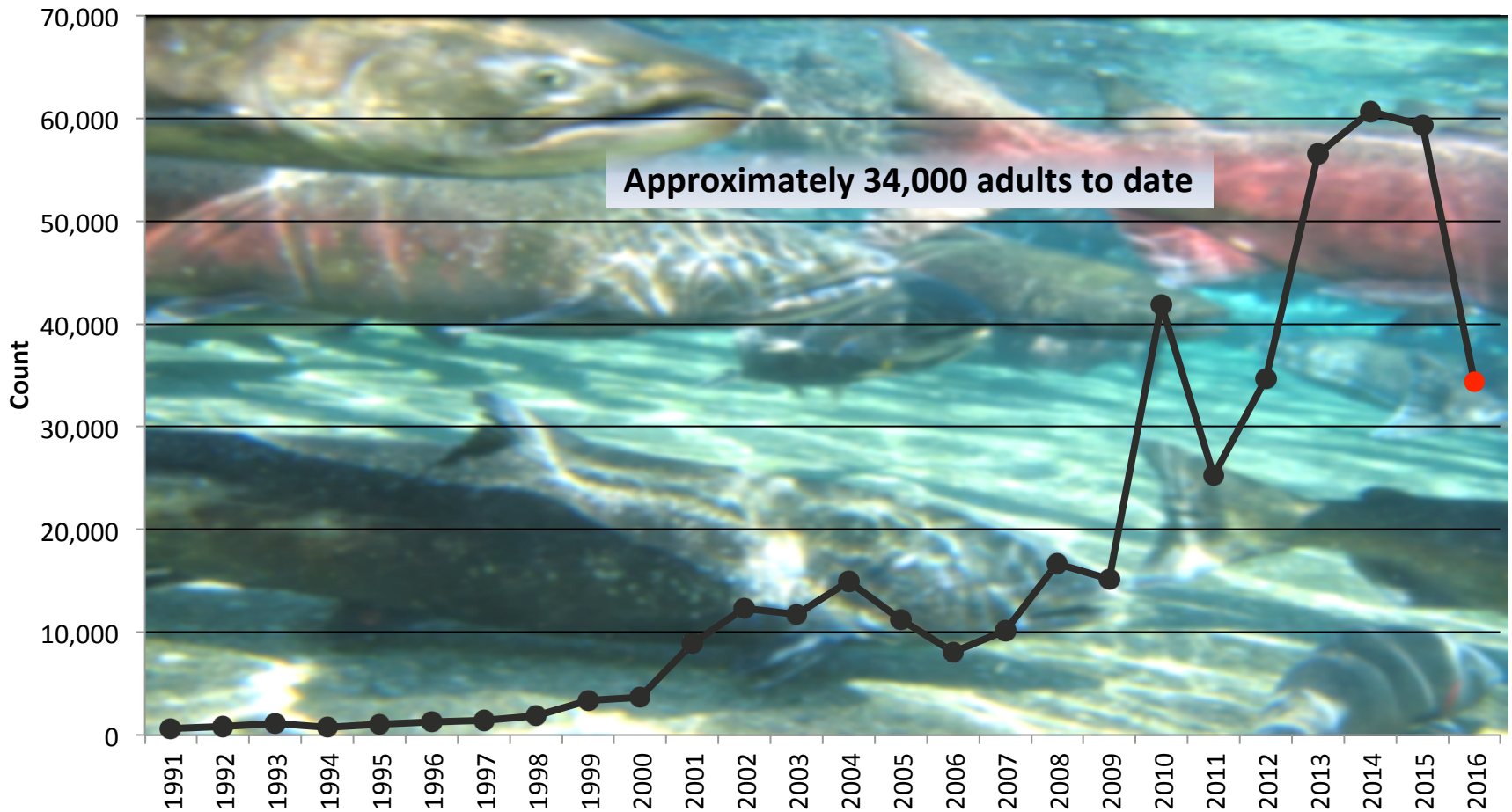


- Program began in 1991 as a voluntary operations plan
- Prepare Brownlee Reservoir beginning in September
- Provide stable river flow level during the spawning period (mid-October through mid-December)
 - Aerial and deep water
- USF&W and Idaho Power cooperatively perform redd counts
 - Maintain the flow required to protect the shallowest redds through the incubation and emergence period
- Monitor and reconnect pools through emergence and migration phases

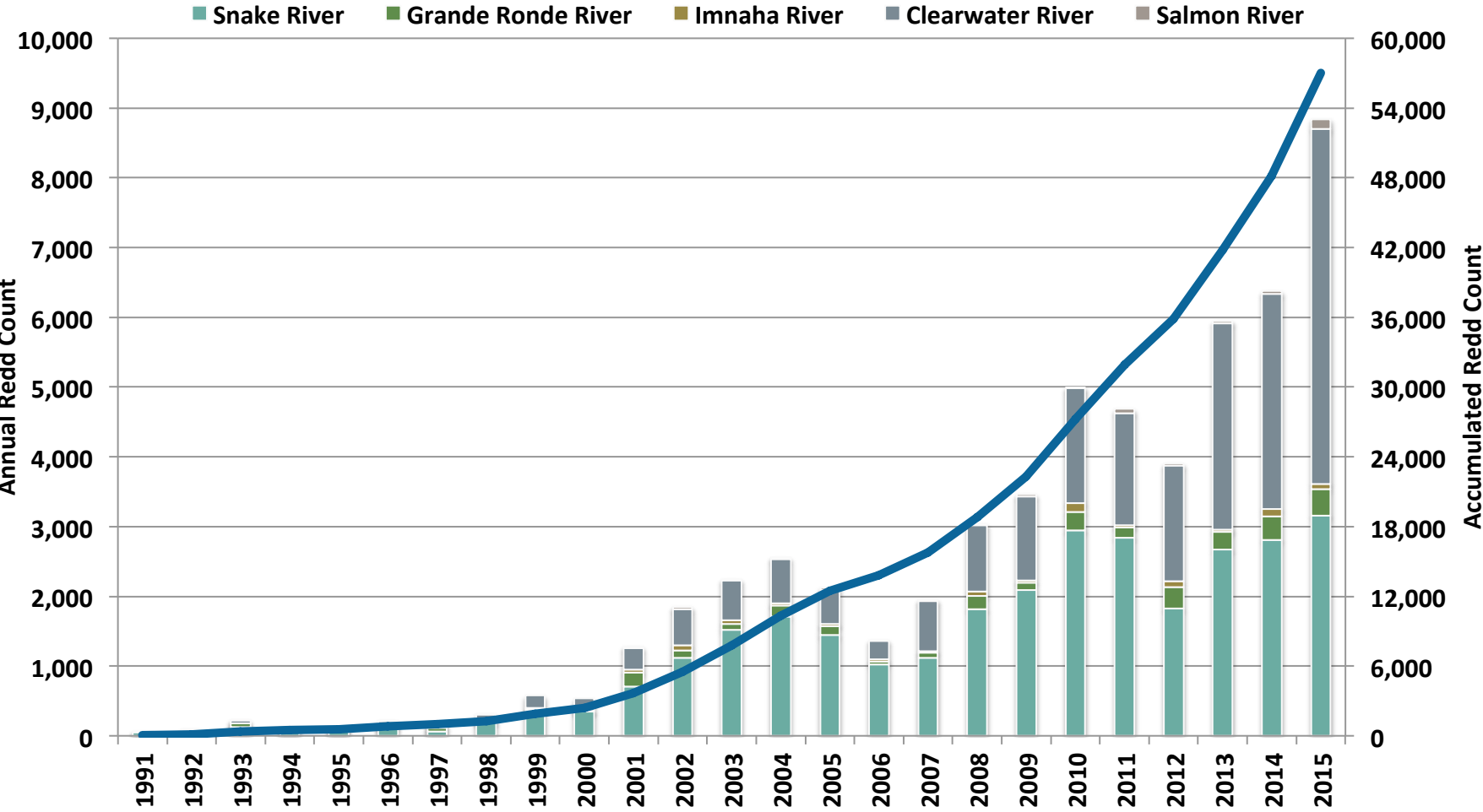
2016 Hells Canyon Fall Chinook Operations – Current and Forecast



Snake River Adult Fall Chinook Returns – Lower Granite



Historic Fall Chinook Salmon Redd Counts



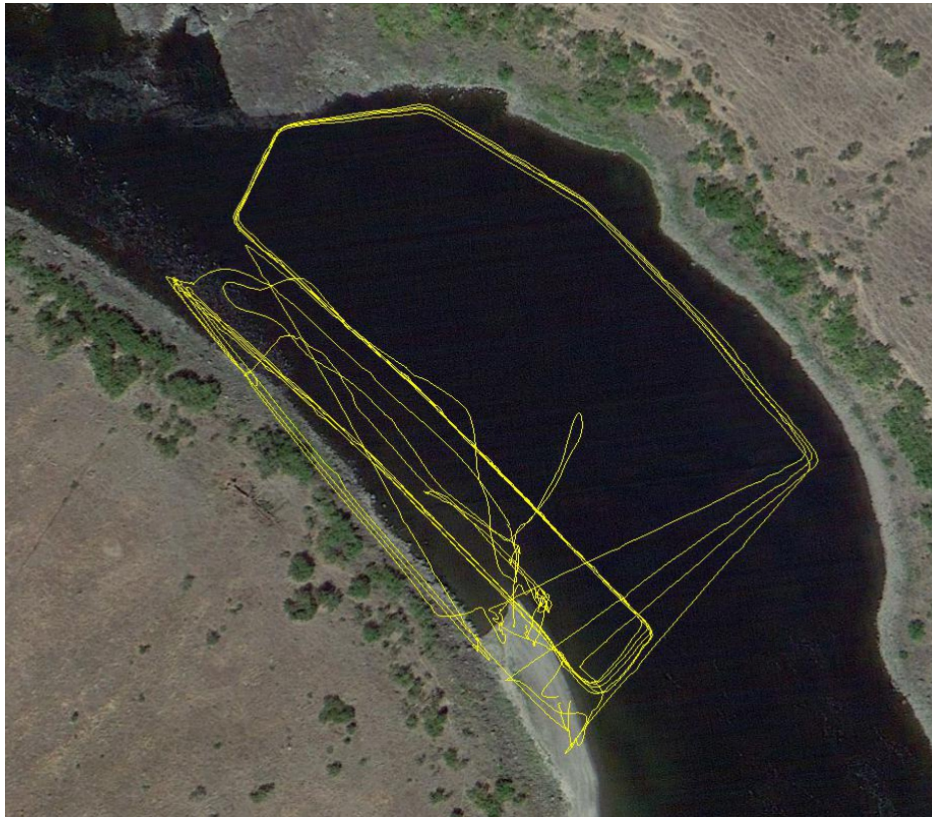
2016 Redd Survey Update

- The Snake River redd counts will be conducted by use of an Unmanned Aircraft System
- Four UAS surveys planned throughout the spawning period
 - First survey flights conducted the week of October 24
 - Next flight scheduled for this week
 - Redds are being constructed and this week should be the peak of fall Chinook spawning
- Two Deep water video surveys Planned
 - First survey is scheduled for the week of November 14th



UAS Survey

- Uses GPS system to plot flight path so same flight can be flown each survey



Questions?



Boneyard

-

