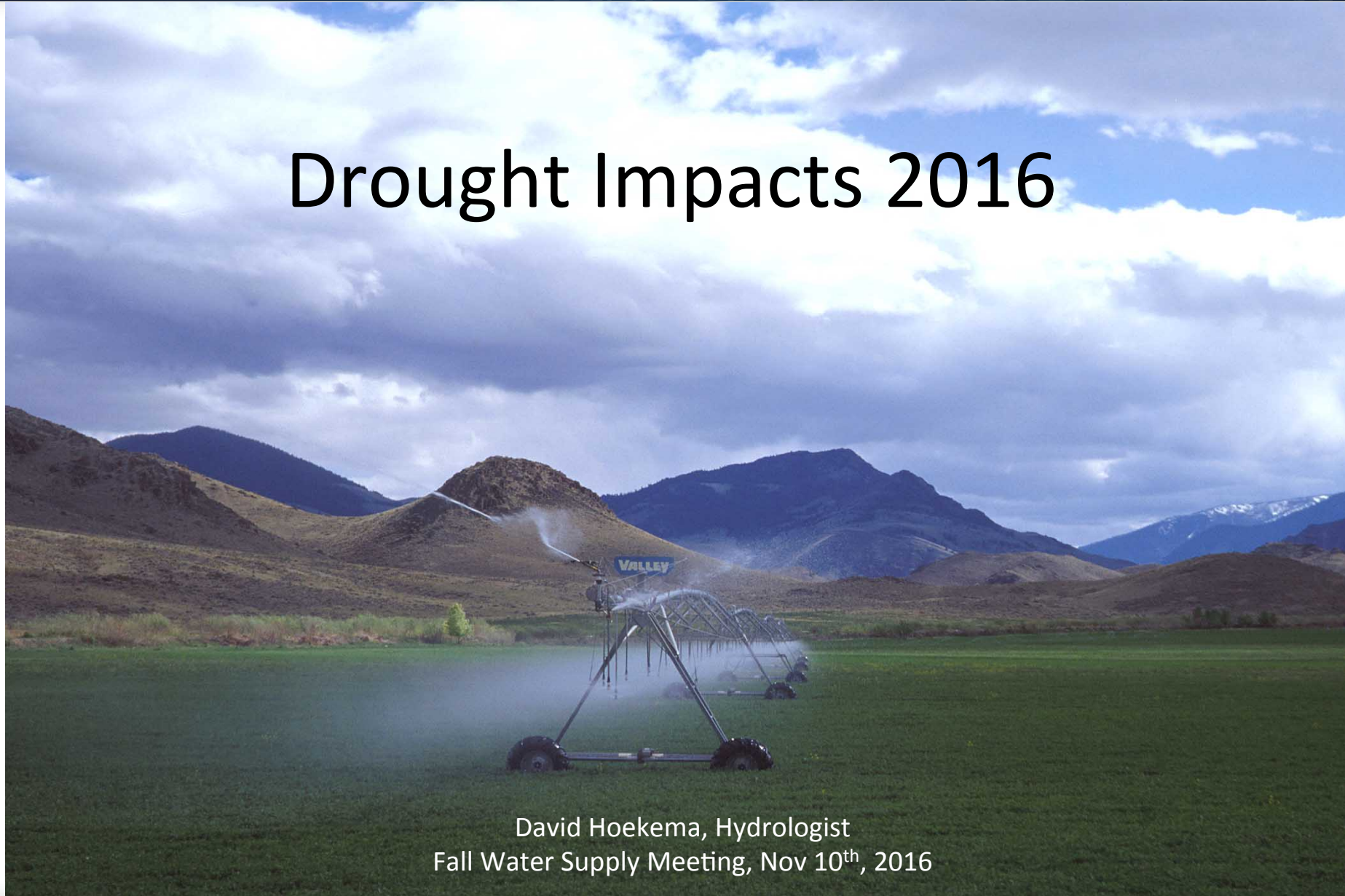


Drought Impacts 2016



David Hoekema, Hydrologist
Fall Water Supply Meeting, Nov 10th, 2016

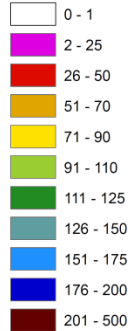
Snowpack Accumulation Map 2016

As of Sunday, April 3, 2016

Explanation:
 This map shows the accumulation of SWE by basin as compared against the median peak snowpack based on the period of record of the SNOTEL stations within each basin. Once snowmelt begins the peak % of median snowpack is preserved for the remainder of the water year.

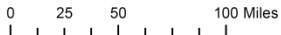
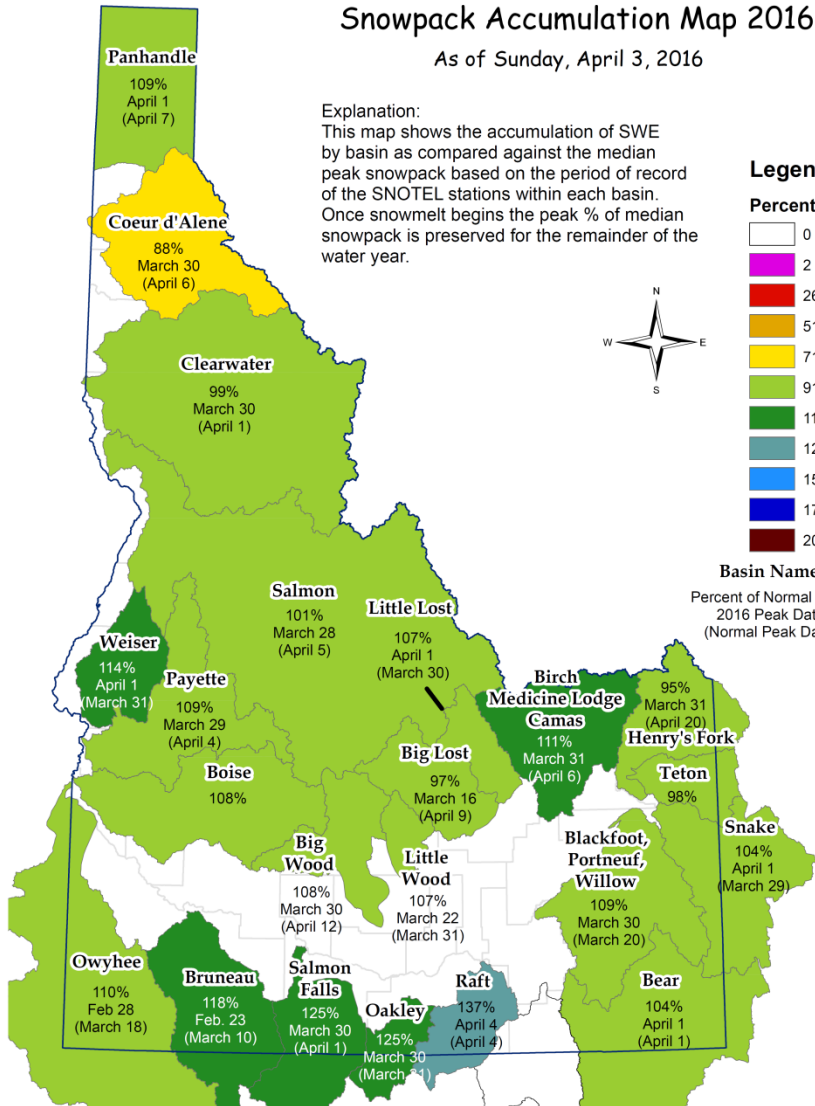
Legend

Percent of Peak



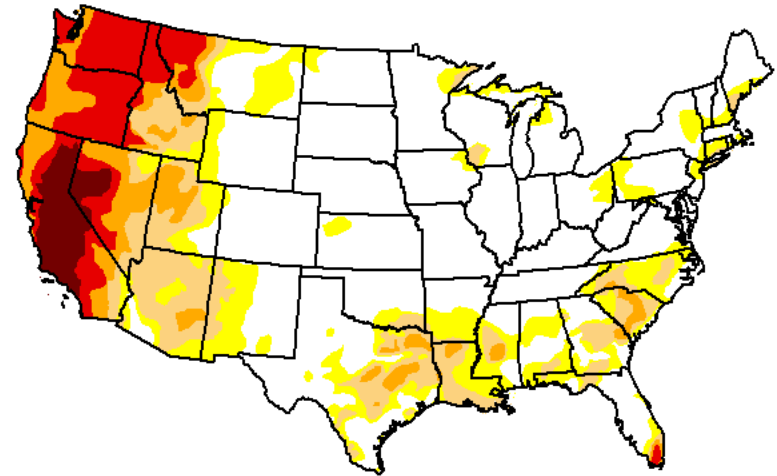
Basin Name

Percent of Normal Peak
 2016 Peak Date
 (Normal Peak Date)

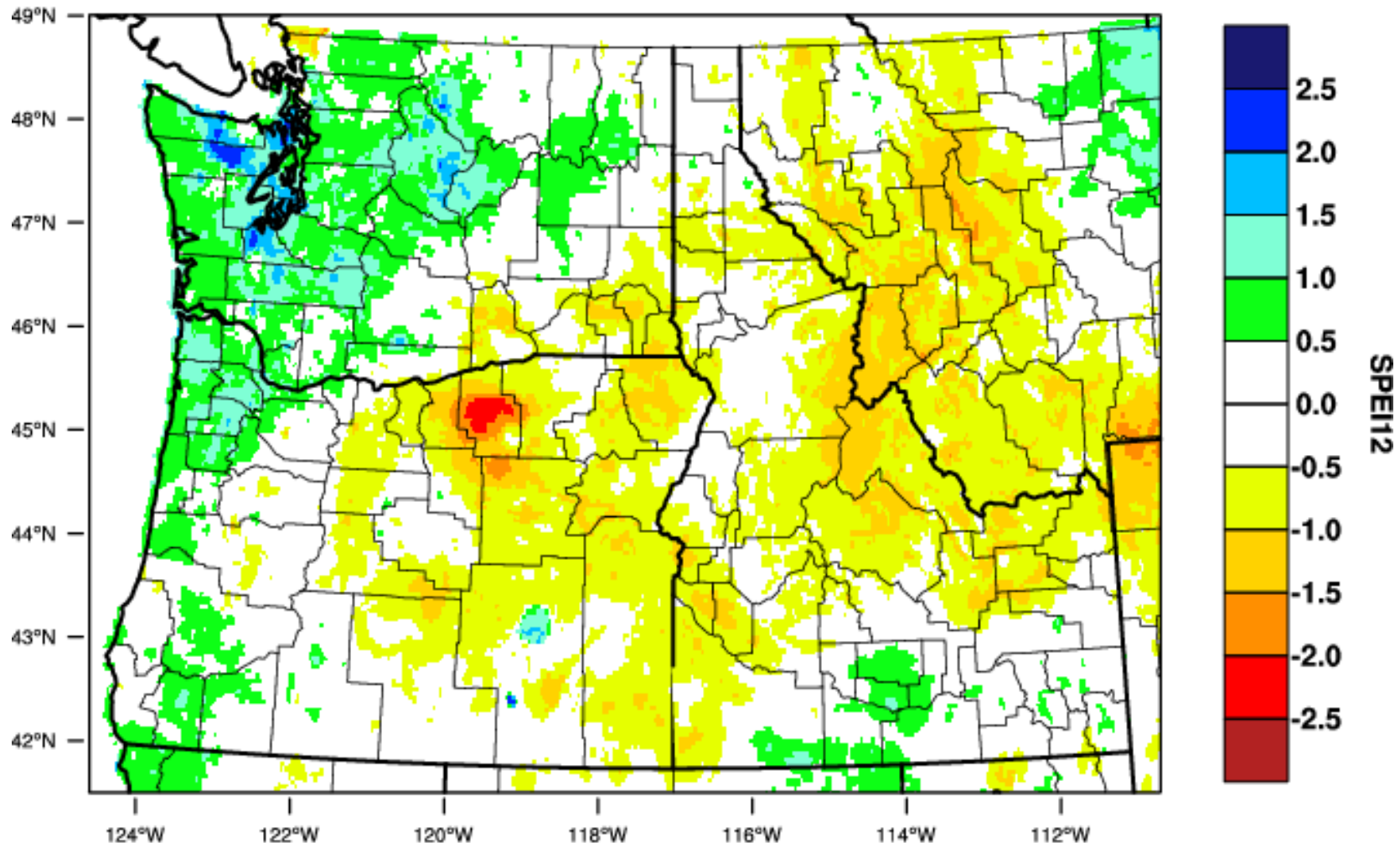


U.S. Drought Monitor CONUS

August 25, 2015

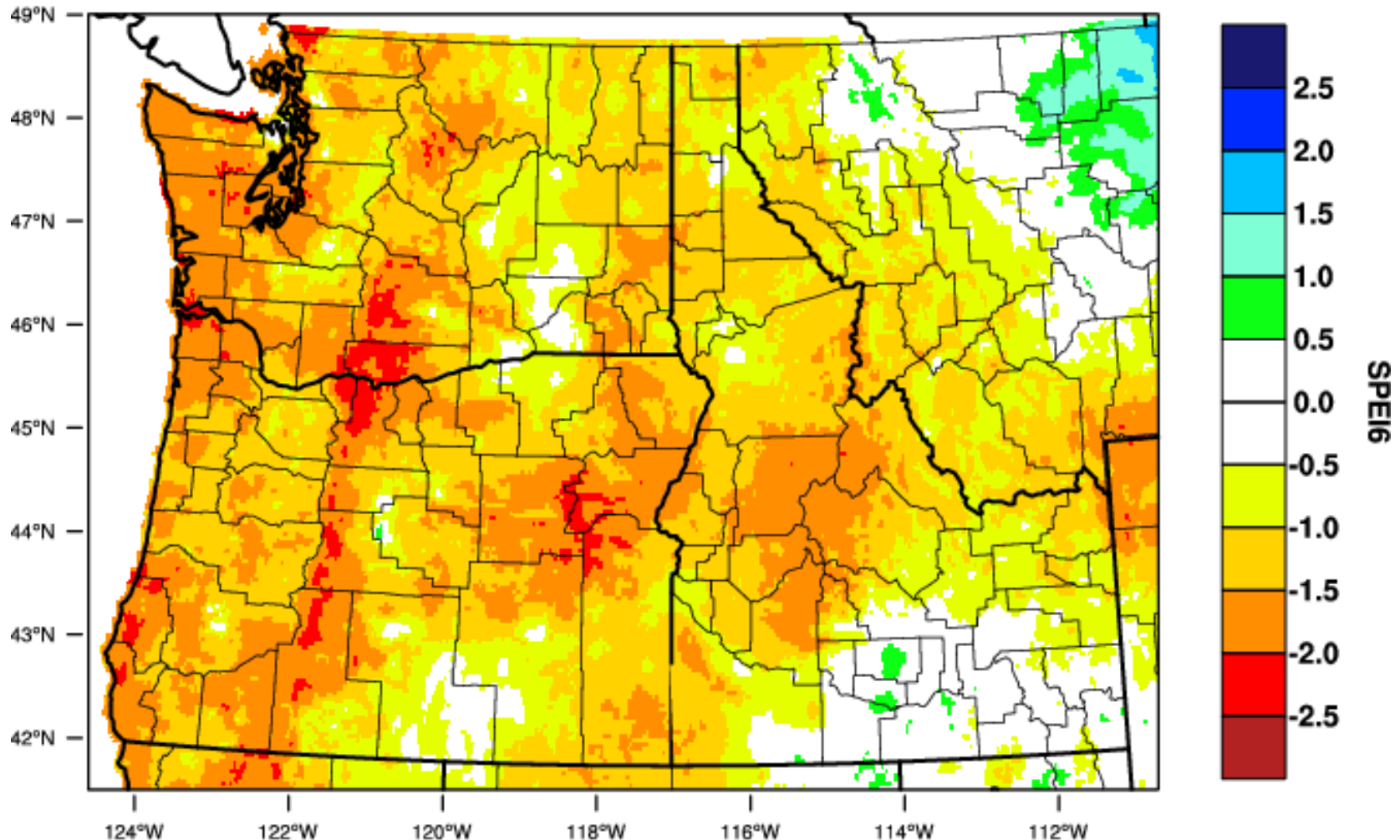


Pacific Northwest - 12 month SPEI September 2016



WestWide Drought Tracker - U Idaho/WRCC Data Source - PRISM (Prelim), created 5 OCT 2016

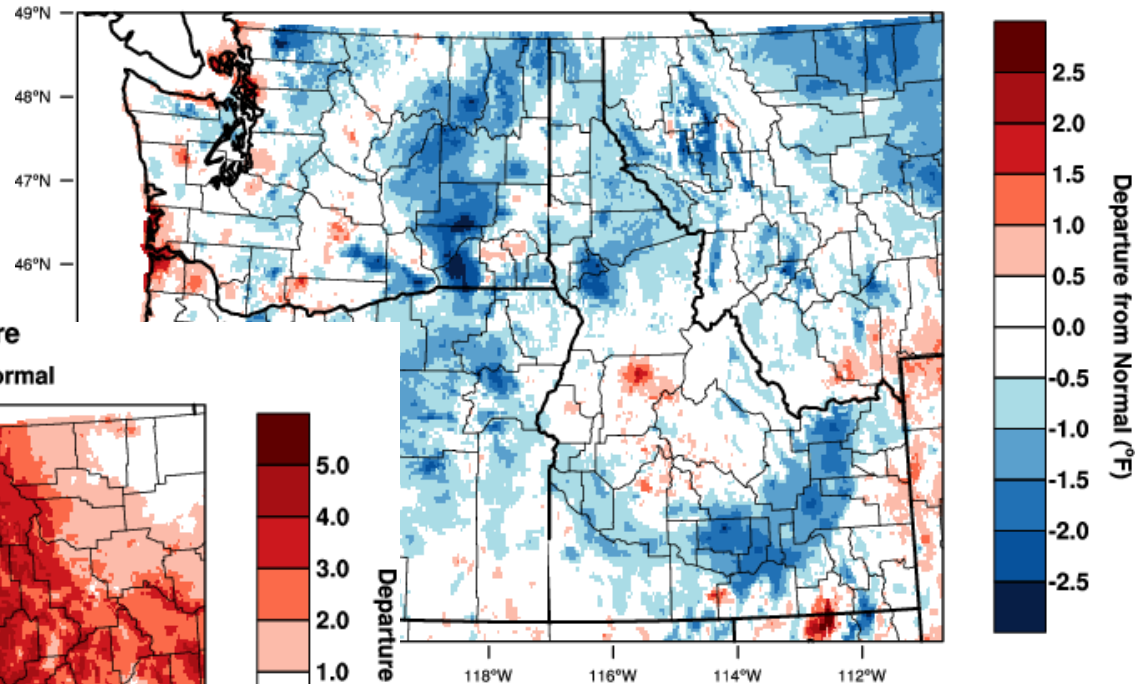
Pacific Northwest - 6 month SPEI
September 2016



WestWide Drought Tracker - U Idaho/WRCC Data Source - PRISM (Prelim), created 5 OCT 2016

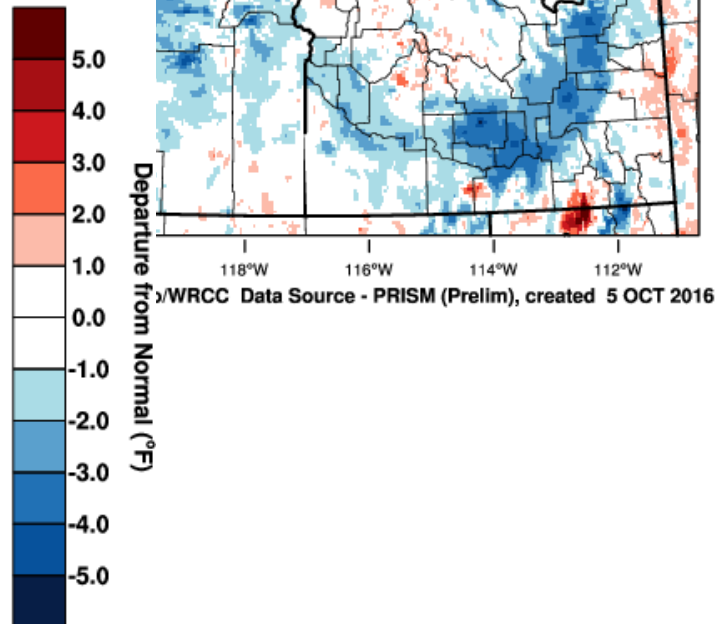
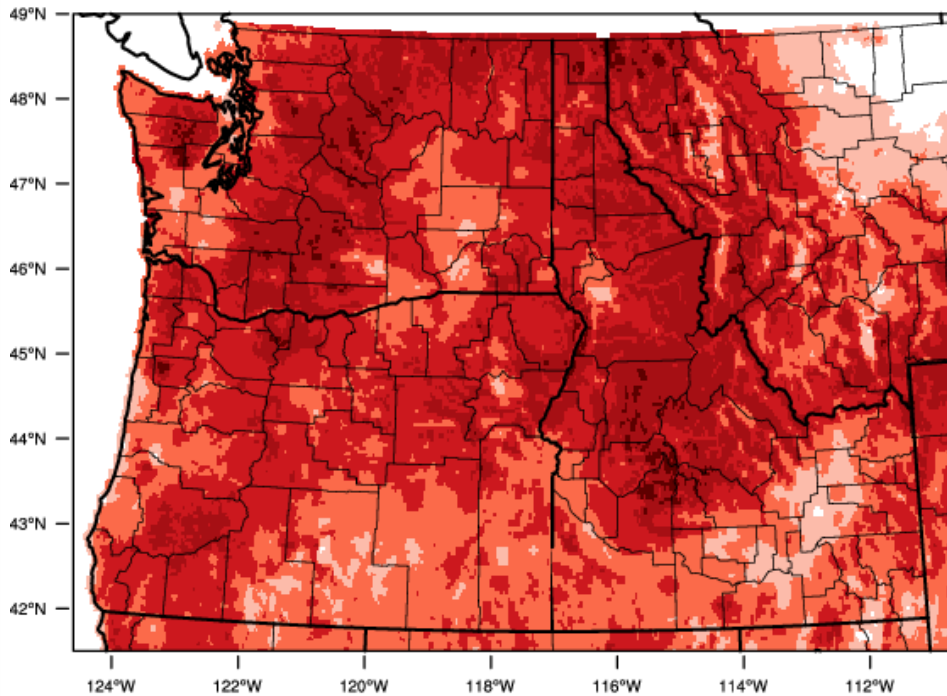
Pacific Northwest - Mean Temperature

July-September 2016 Departure from 1981-2010 Normal



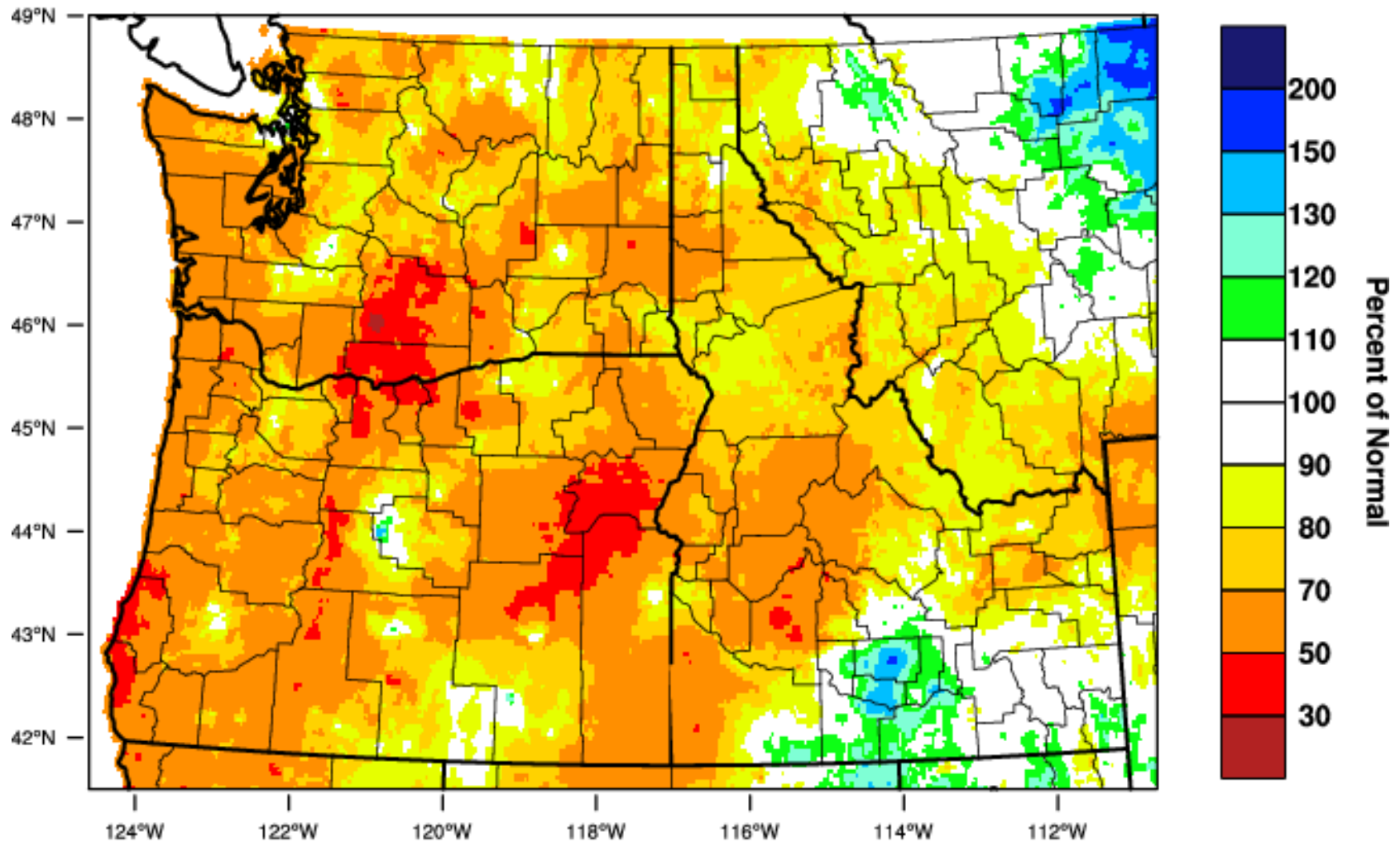
Pacific Northwest - Mean Temperature

April-June 2016 Departure from 1981-2010 Normal



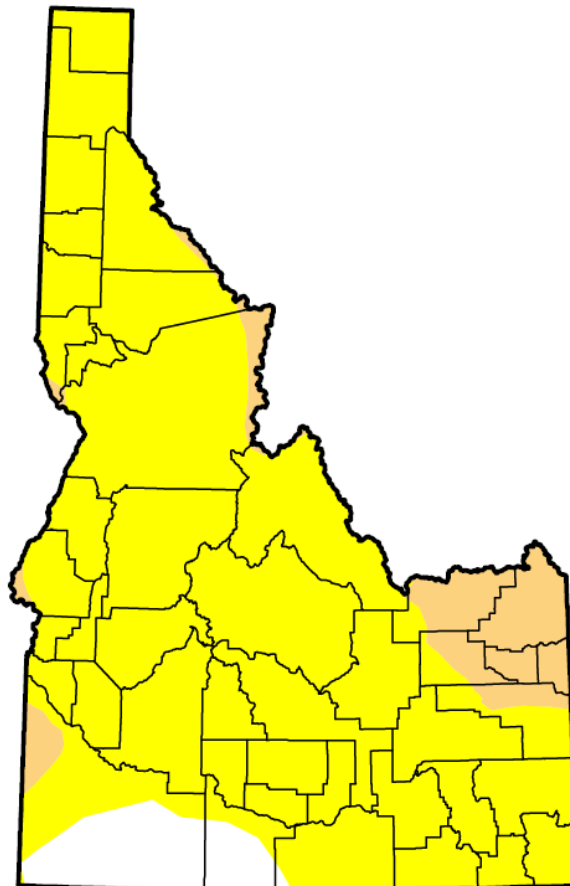
Pacific Northwest - Precipitation

April-September 2016 Percent of 1981-2010 Normal



U.S. Drought Monitor Idaho

September 27, 2016
(Released Thursday, Sep. 29, 2016)
Valid 8 a.m. EDT



Drought Conditions (Percent Area)

	None	D0-D4	D1-D4	D2-D4	D3-D4	D4
Current	6.14	93.86	8.89	0.00	0.00	0.00
Last Week 9/20/2016	6.14	93.86	15.28	0.00	0.00	0.00
3 Months Ago 6/28/2016	60.12	39.88	0.30	0.00	0.00	0.00
Start of Calendar Year 12/29/2015	10.98	89.02	64.05	24.35	1.18	0.00
Start of Water Year 9/29/2015	0.00	100.00	85.59	47.55	29.26	0.00
One Year Ago 9/29/2015	0.00	100.00	85.59	47.55	29.26	0.00

Intensity:

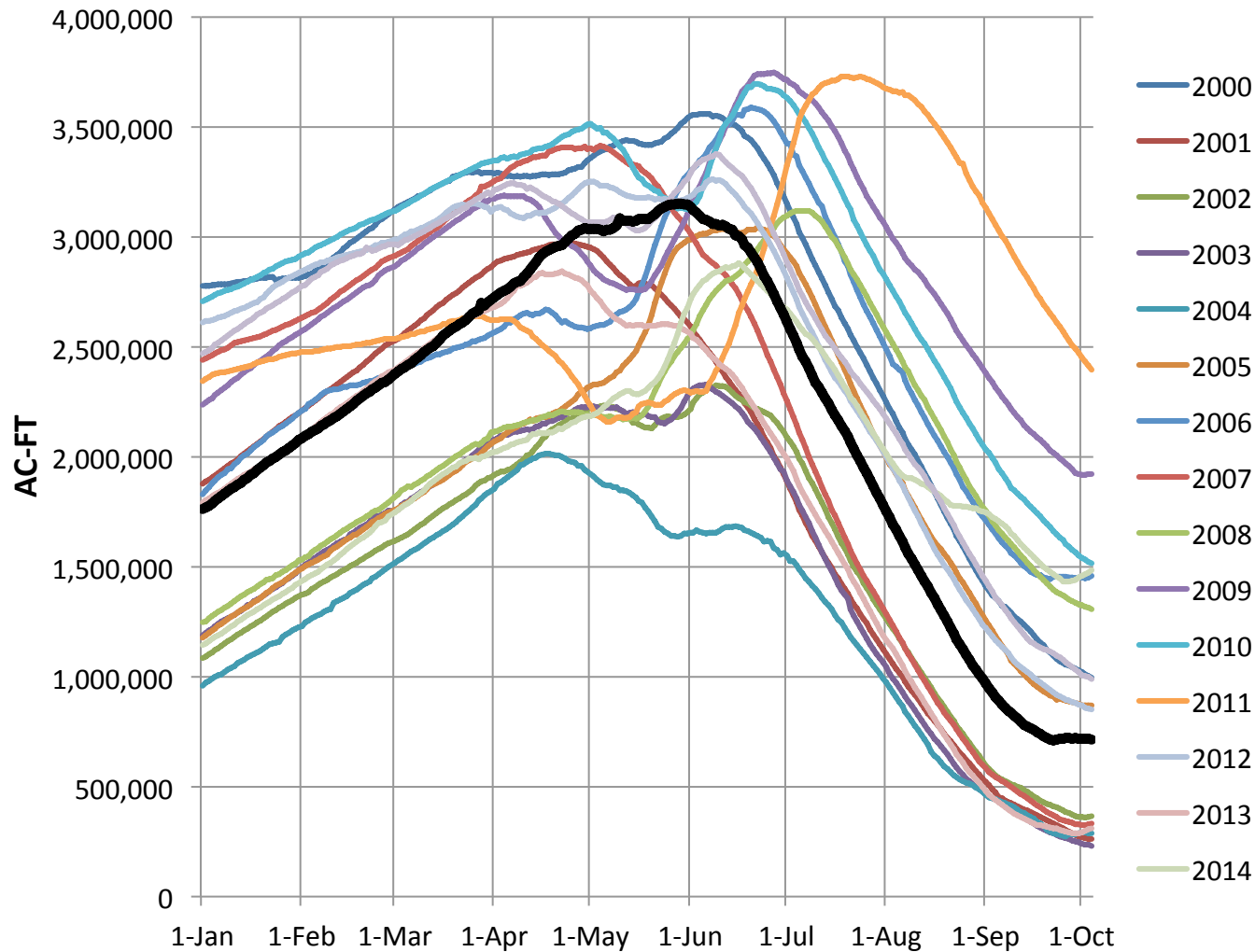
- D0 Abnormally Dry
- D1 Moderate Drought
- D2 Severe Drought
- D3 Extreme Drought
- D4 Exceptional Drought

The Drought Monitor focuses on broad-scale conditions. Local conditions may vary. See accompanying text summary for forecast statements.

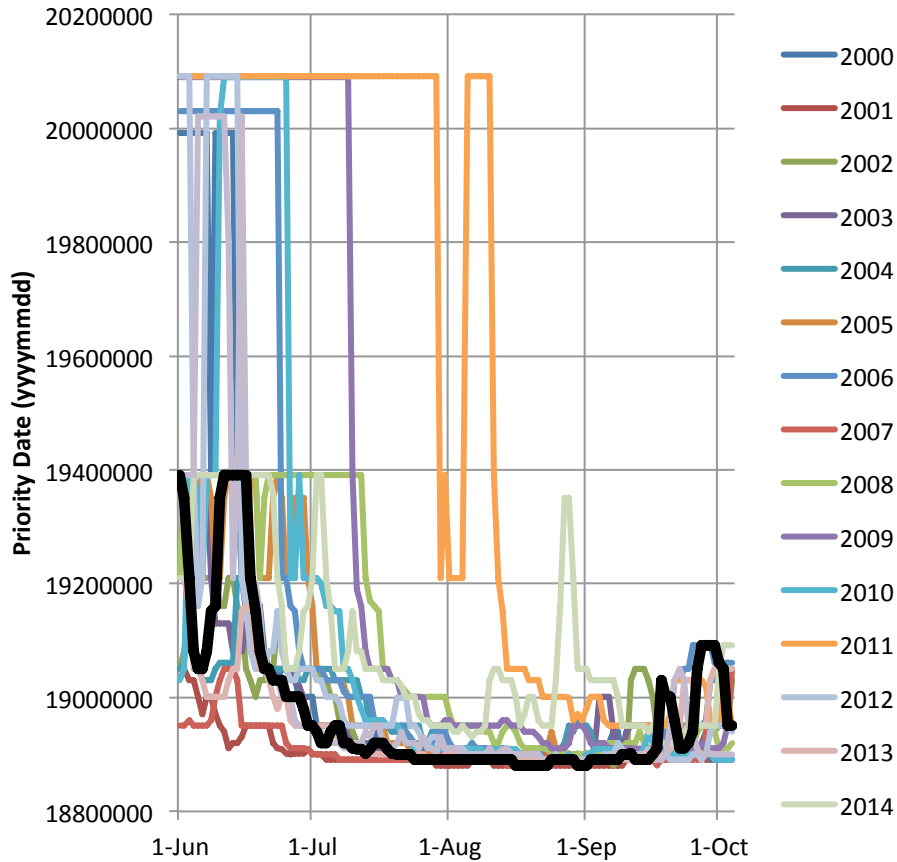
Author:
Chris Fenimore
NCEI/NESDIS/NOAA



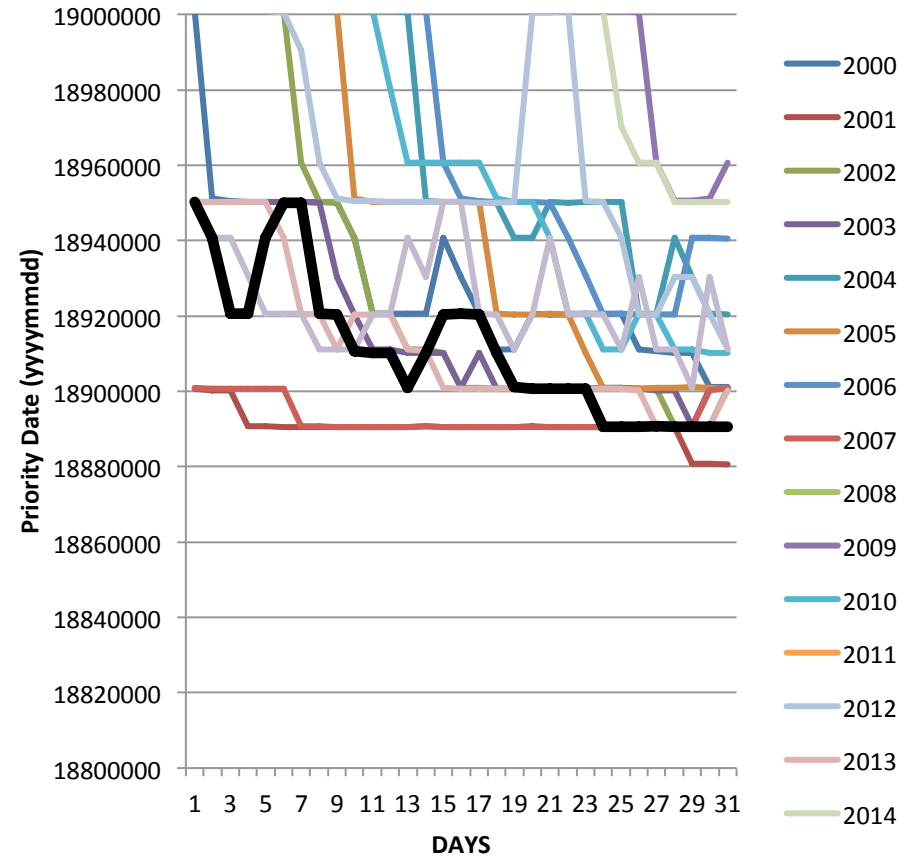
Sum of Major Snake River Reservoirs



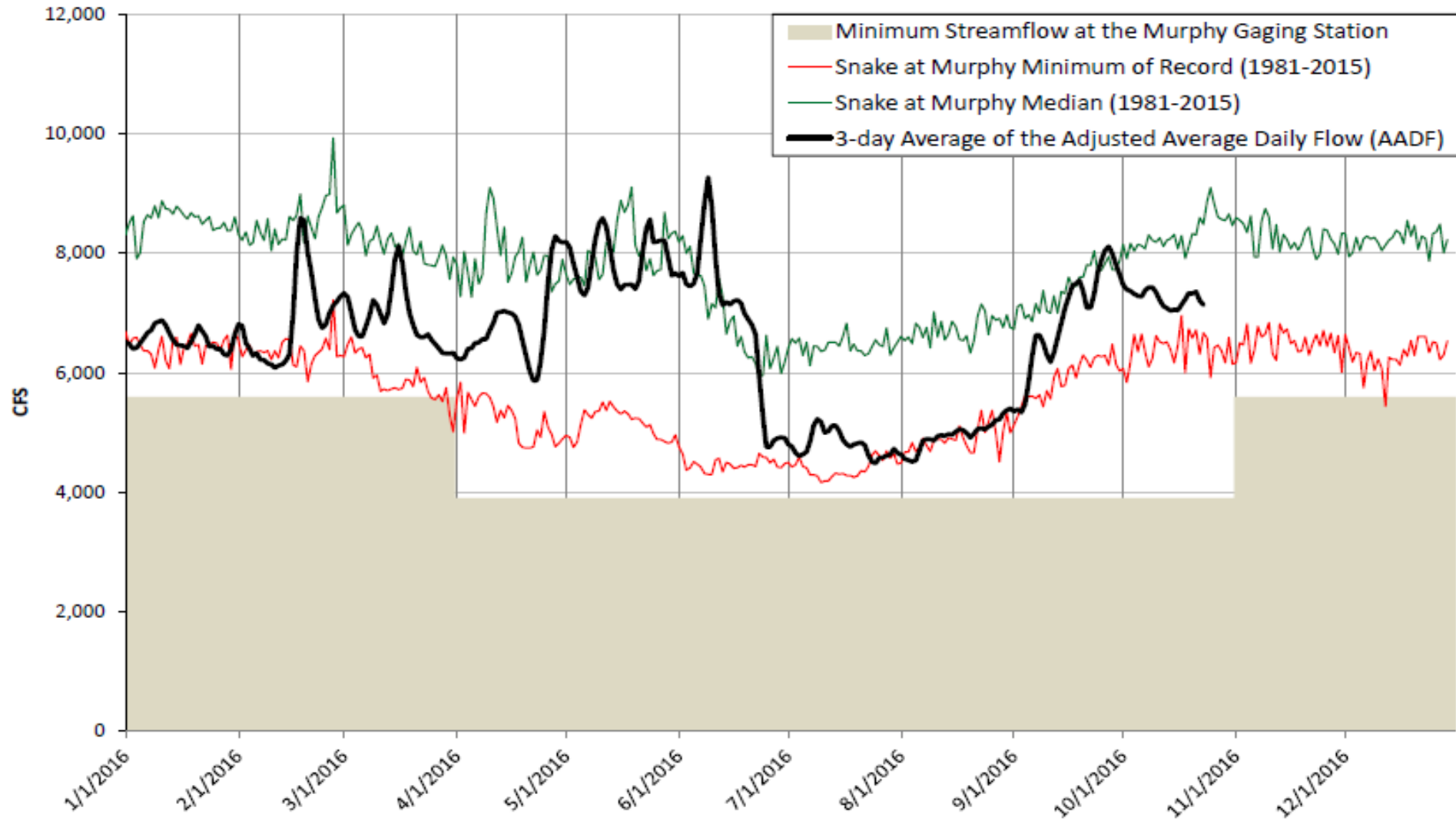
Priorities on the Upper Snake River



Priorities on the Upper Snake in July

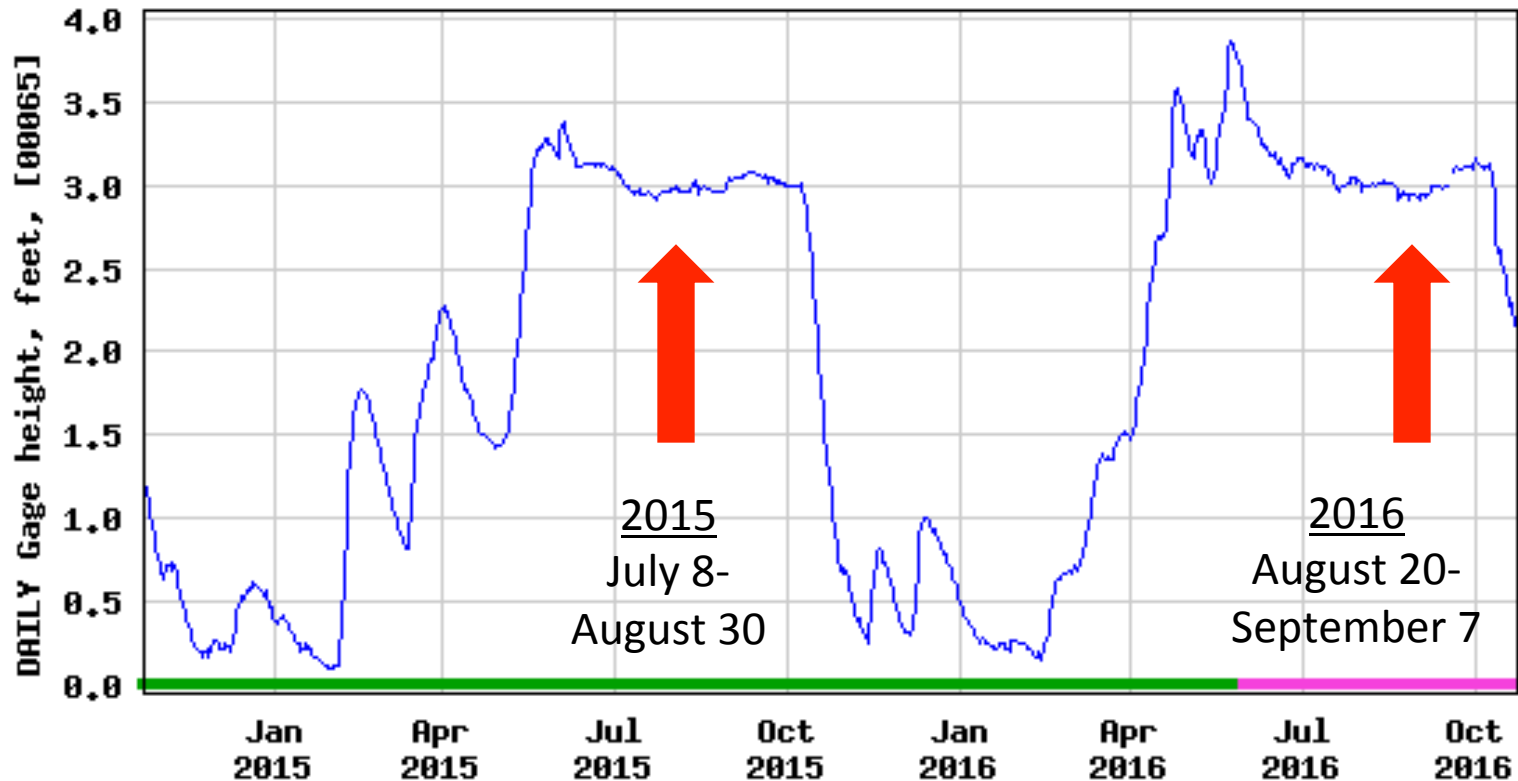


SUMMARY HYDROGRAPH SNAKE RIVER NR MURPHY 1981-2016





USGS 12393000 PRIEST LAKE AT OUTLET NR COOLIN ID



- Daily observation at midnight gage height
- Period of approved data
- Period of provisional data