

RECLAMATION

Managing Water in the West

Idaho Fall Water Supply Committee Meeting

Southwest Idaho Report

November 10, 2016



U.S. Department of the Interior
Bureau of Reclamation



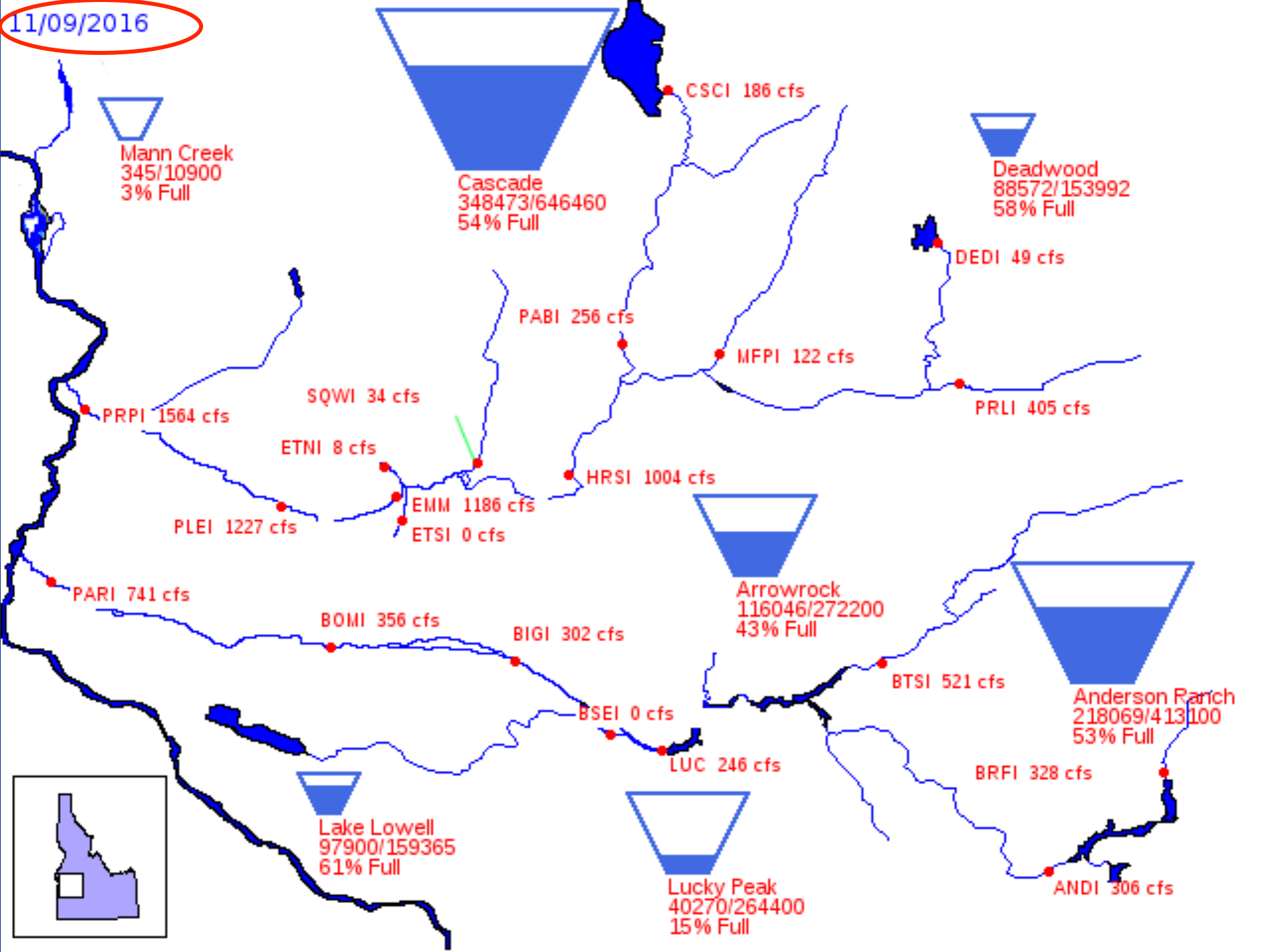


Maximum flow at Glenwood
approx. 5600 cfs:

**Max Daily Boise Nat.
Flow = 11,300 cfs**

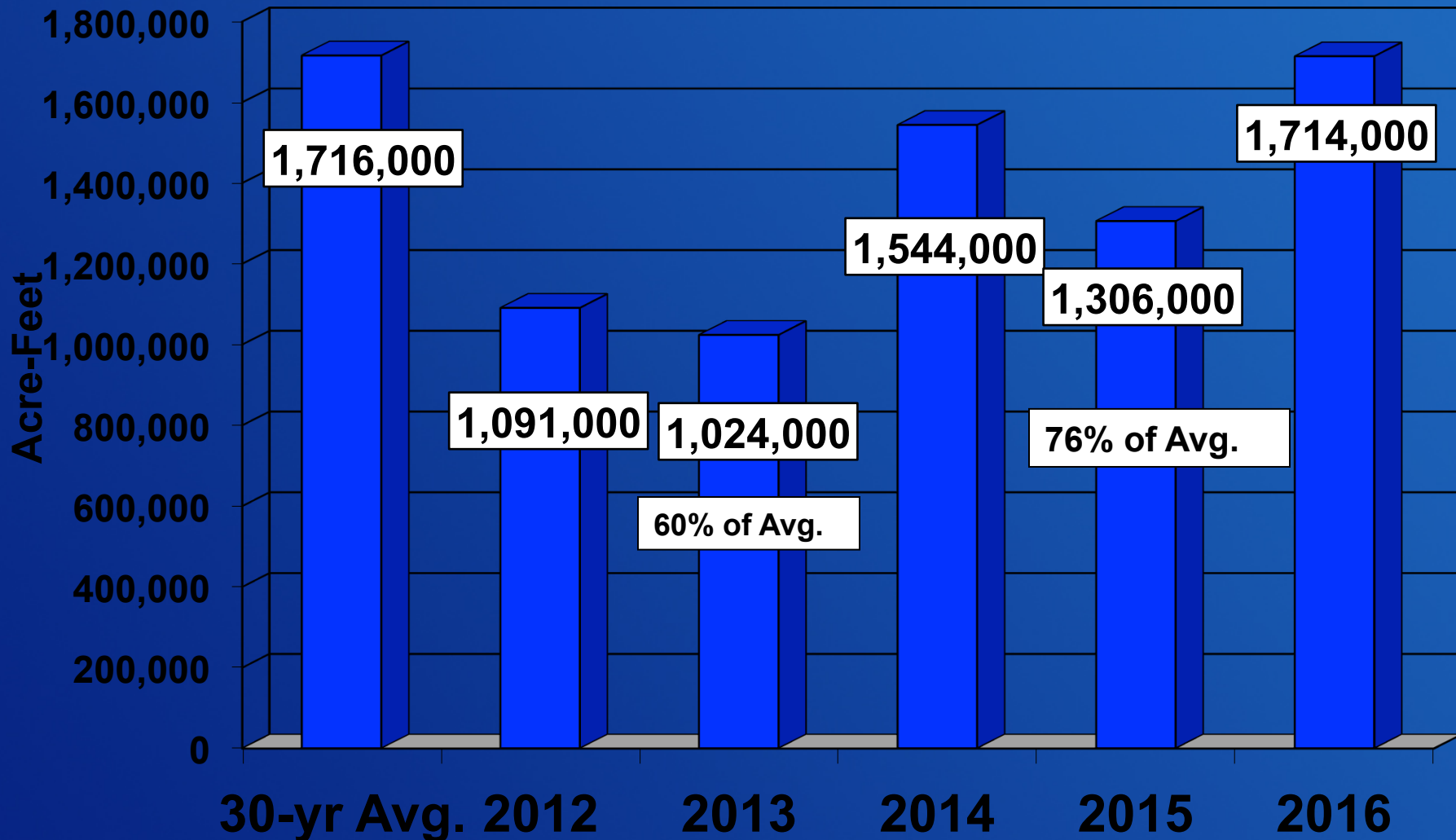
RECLAMATION

11/09/2016



Boise Basin Runoff

Oct 1 – July 31



RECLAMATION

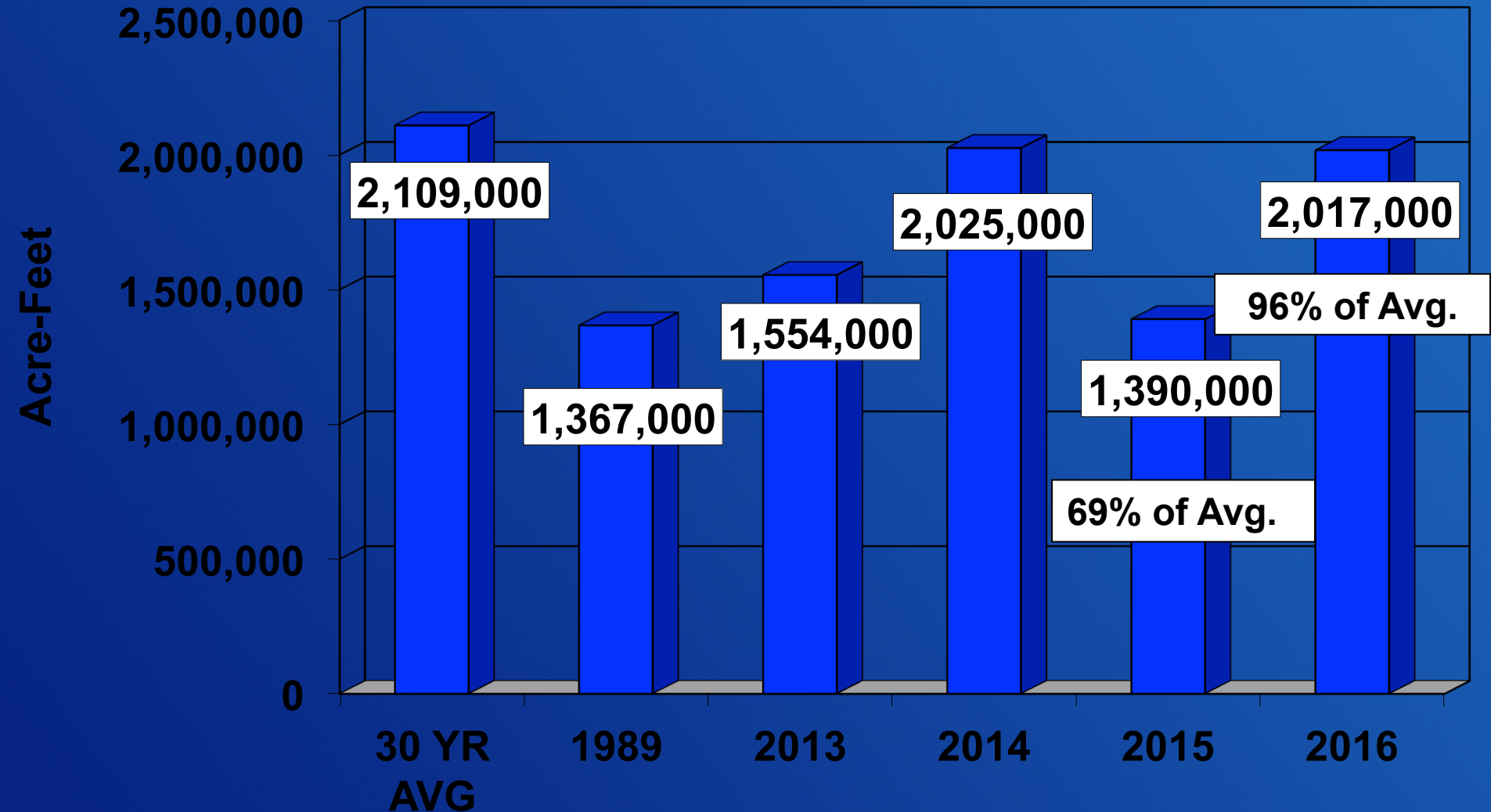
A high-angle photograph of a large concrete dam. The dam is composed of several sections, with a central spillway where water is cascading over. The water is white and turbulent. The dam is surrounded by a rocky and forested landscape. In the foreground, there is a concrete walkway with a metal railing. The sky is clear and blue.

Payette Basin

**Max Payette Nat. Flow =
14,600 cfs**

Payette River Runoff at Horseshoe Bend

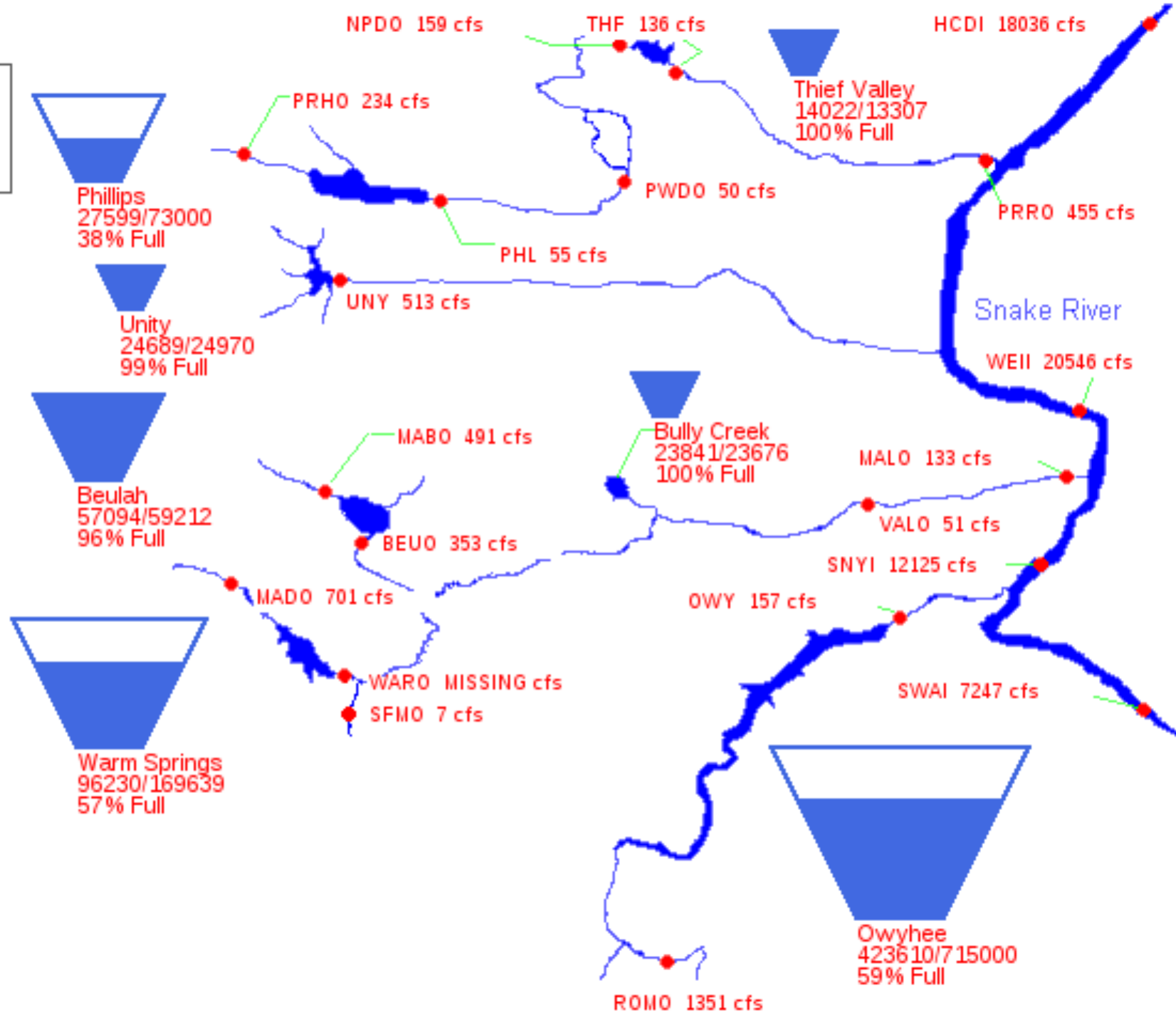
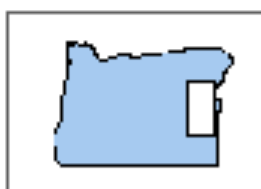
October 1 – July 31



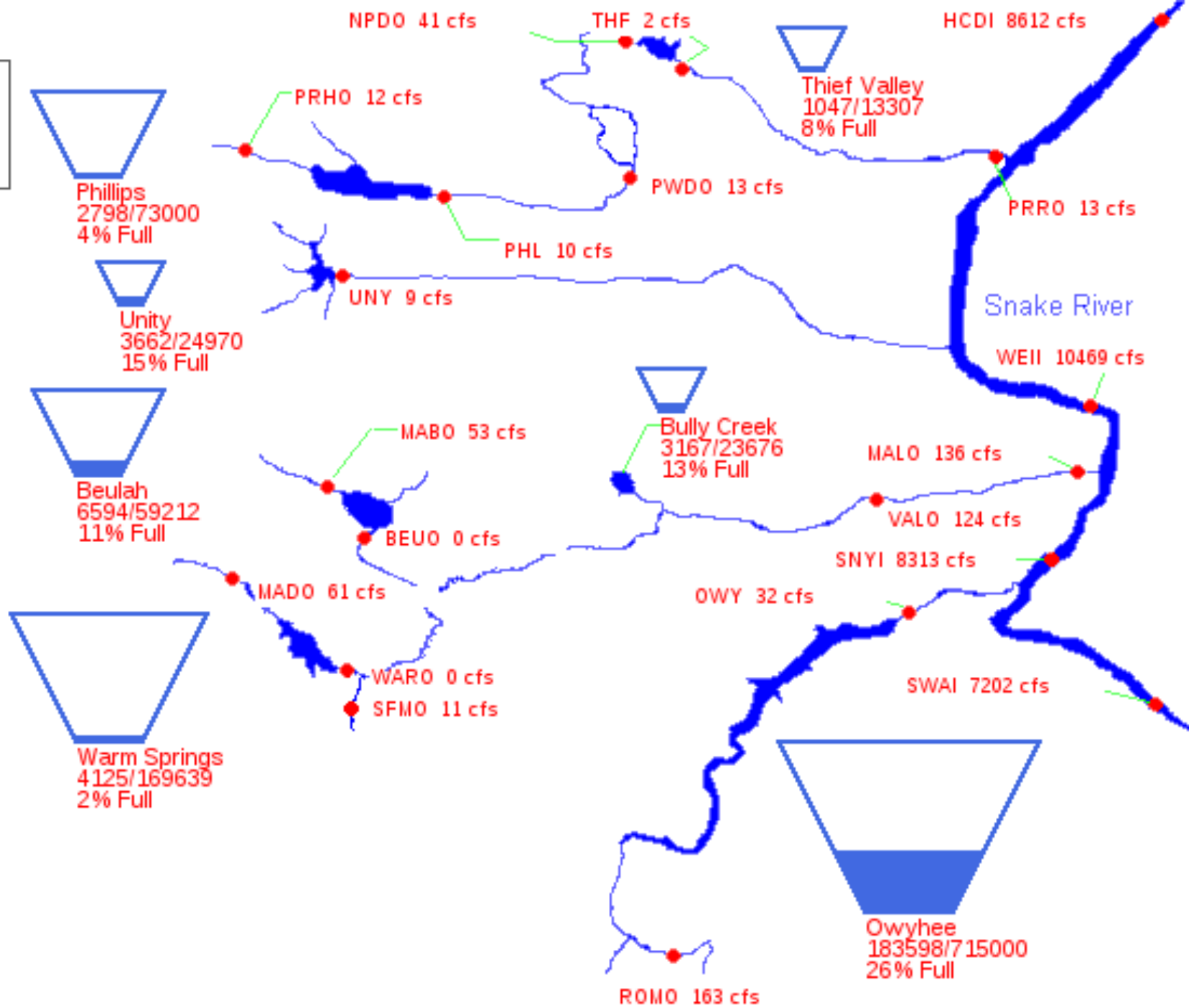
RECLAMATION



04/11/2016

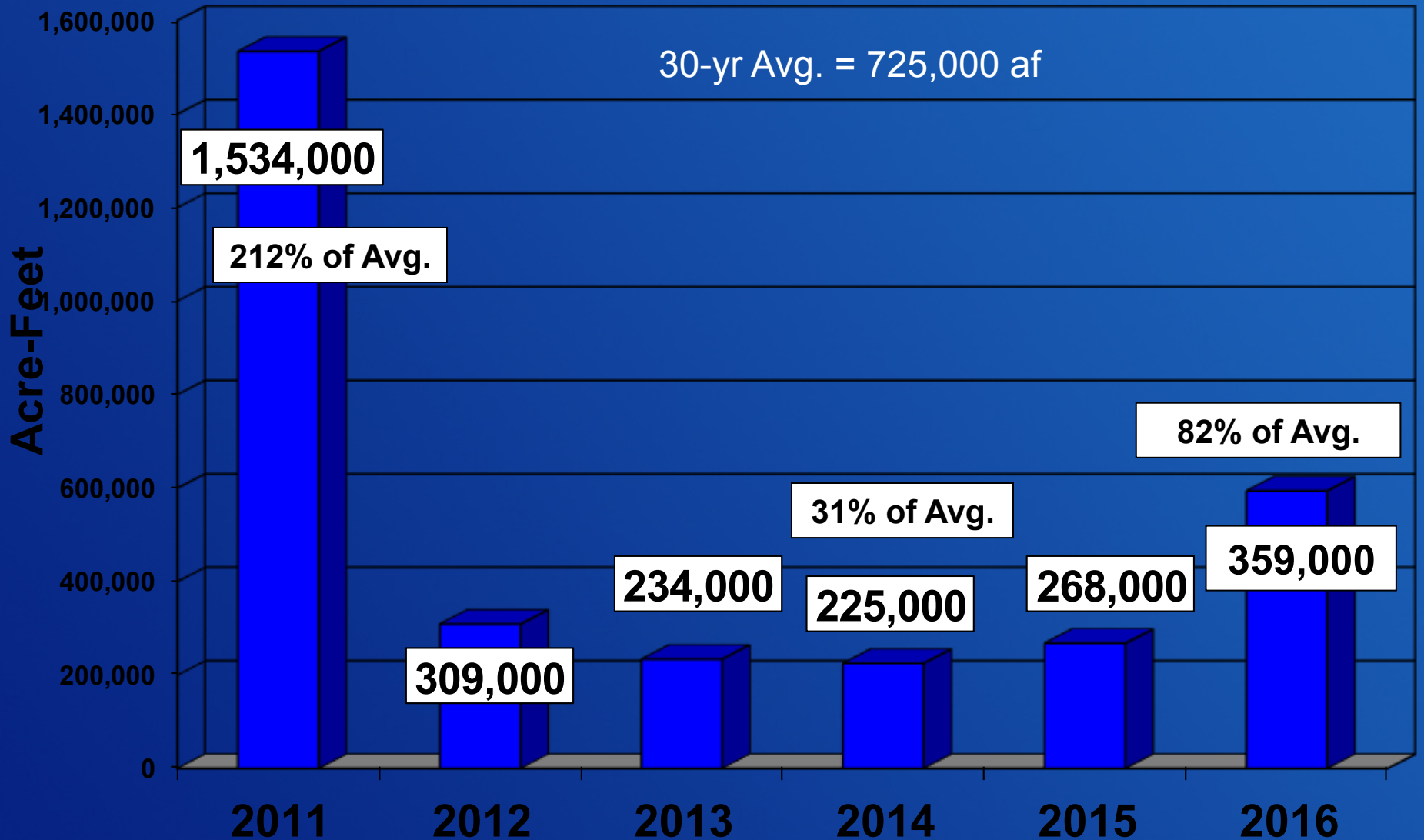


11/09/2016



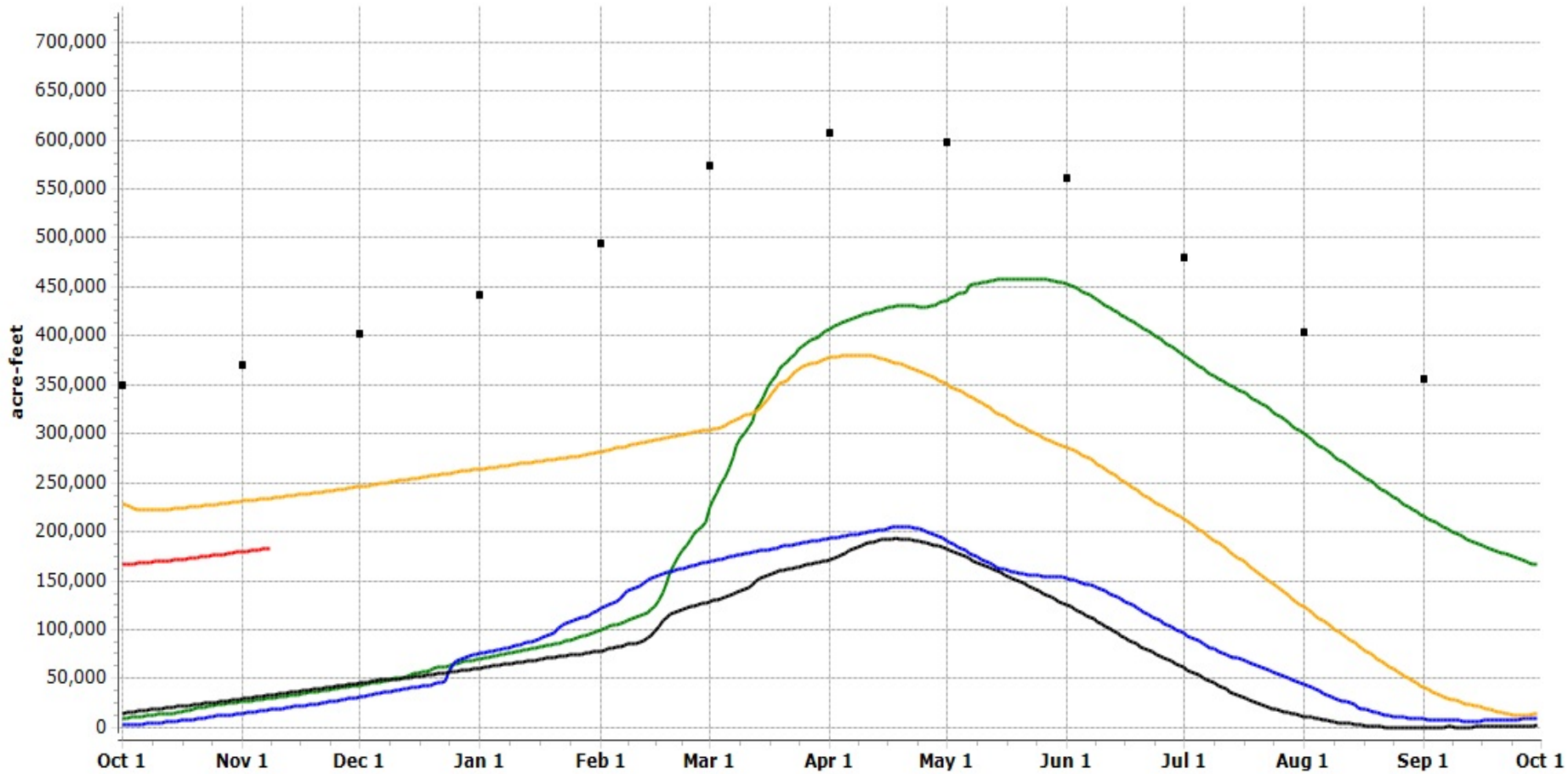
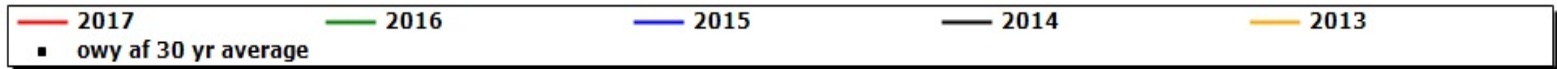
Owyhee Reservoir Inflows

April 1 – June 30



RECLAMATION

Owyhee Reservoir Storage (capacity - 715,000 af)





RECLAMATION