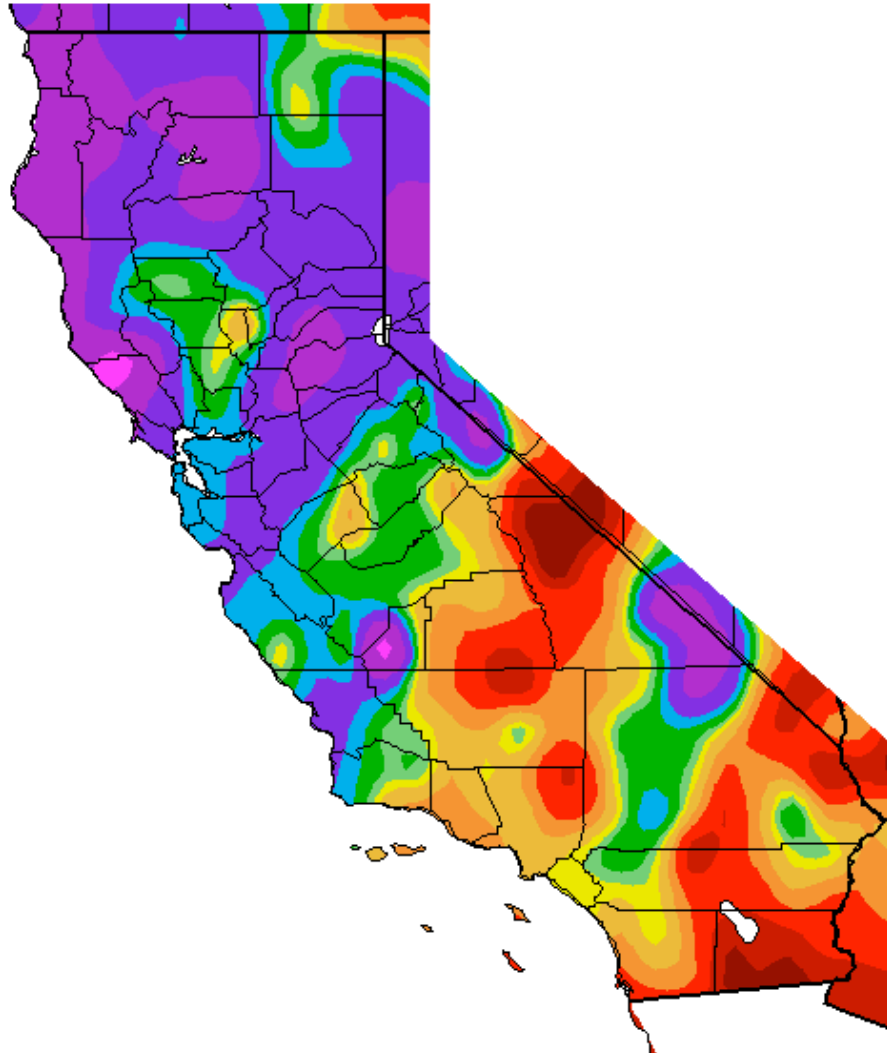


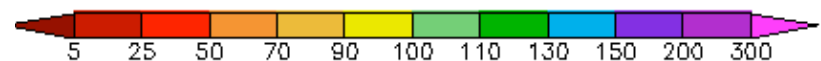
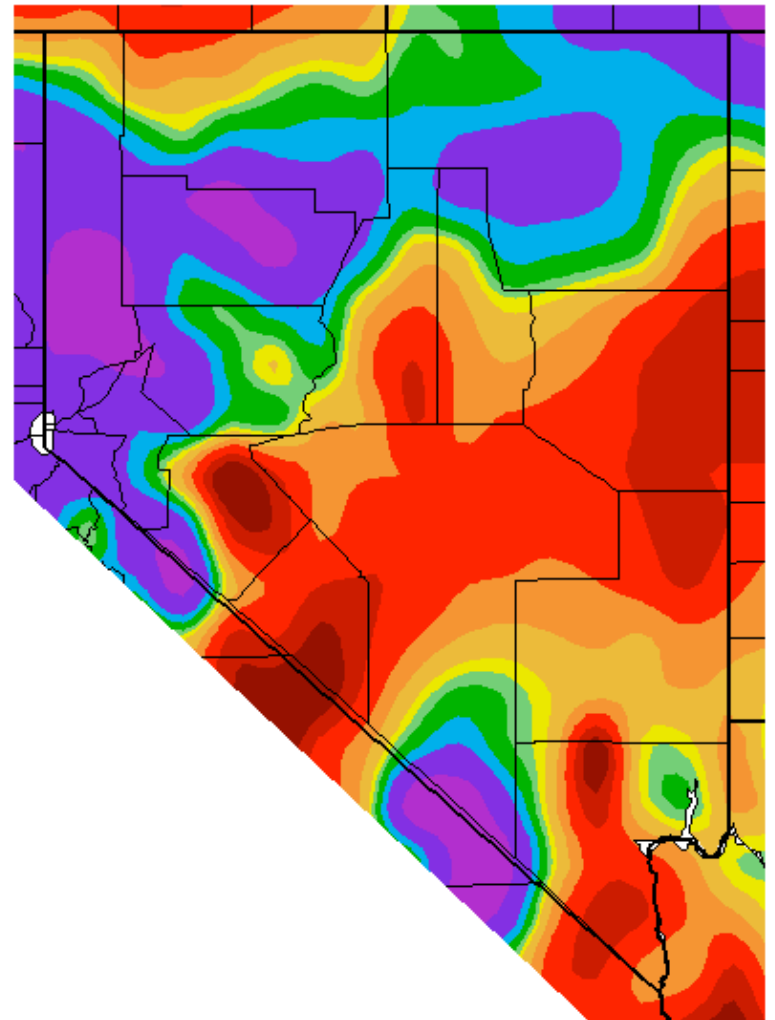
Water Year (Oct 1) to-date % of normal precipitation

Percent of Average Precipitation (%)
10/1/2016 – 11/28/2016



Generated 11/29/2016 at WRCC using provisional data.
NOAA Regional Climate Centers

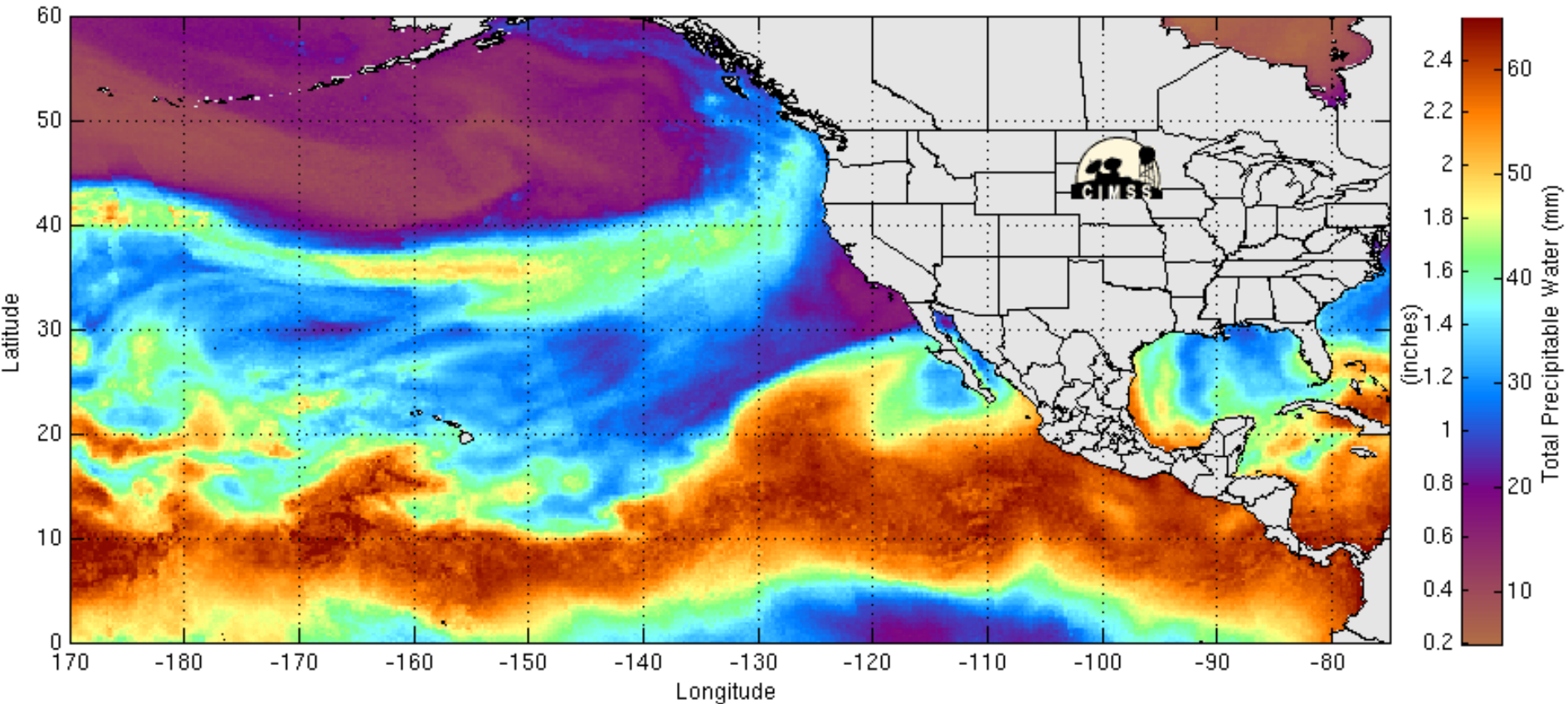
Percent of Average Precipitation (%)
10/1/2016 – 11/28/2016



Generated 11/29/2016 at WRCC using provisional data.
NOAA Regional Climate Centers

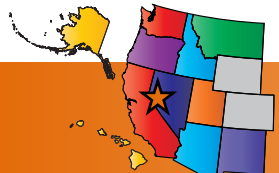
What Is an Atmospheric River?

Precipitable Water: Oct 13-15 2016



Atmospheric river making landfall in northern CA

Source: tropic.ssec.wisc.edu/real-time/mimic-tpw/epac/main.html



Western Regional Climate Center
Providing climate services since 1986

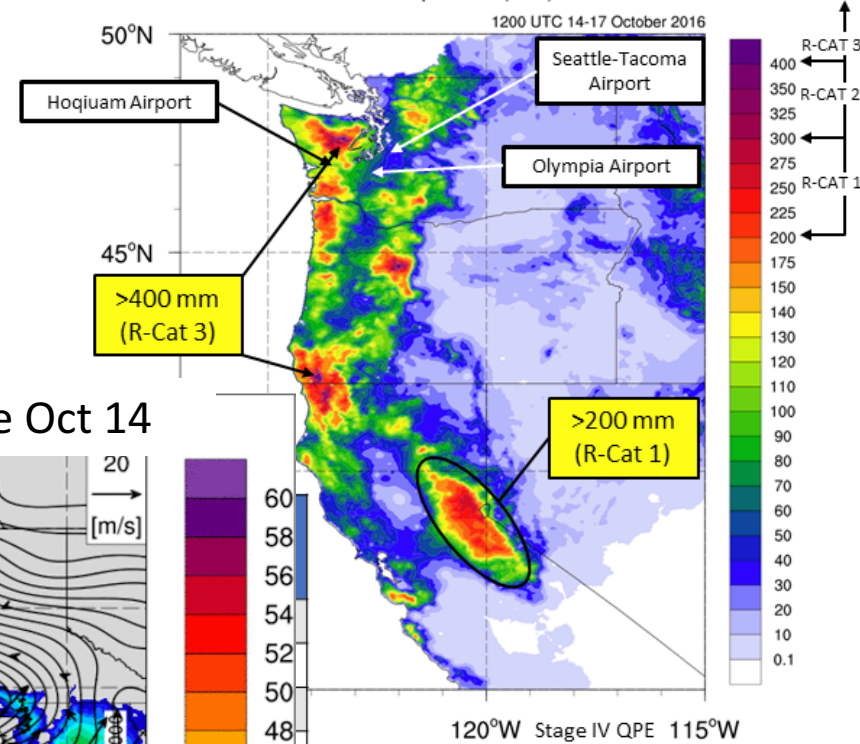
CNAP
California-Nevada Climate Applications Program



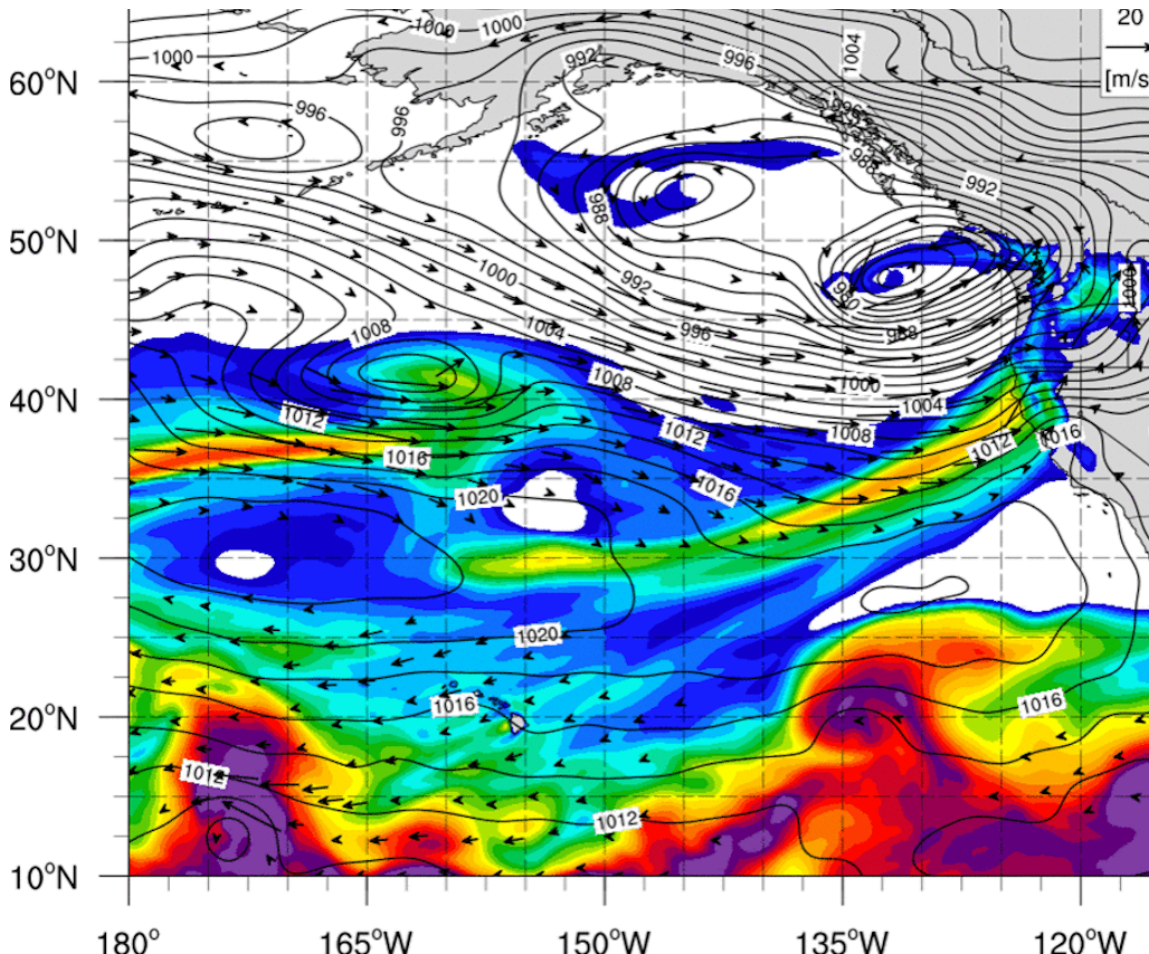
Oct 14-17:

- 2 “atmospheric rivers” impacted CA
- Began as typhoon Songda in the western Pacific, retained some of its tropical “juice”
- Similar to 1962 “Columbus Day Storm” in Pacific Northwest

72-h Accumulated Precipitation (mm)



Integrated Water Vapor and Sea Level Pressure Oct 14



Over 3 days:

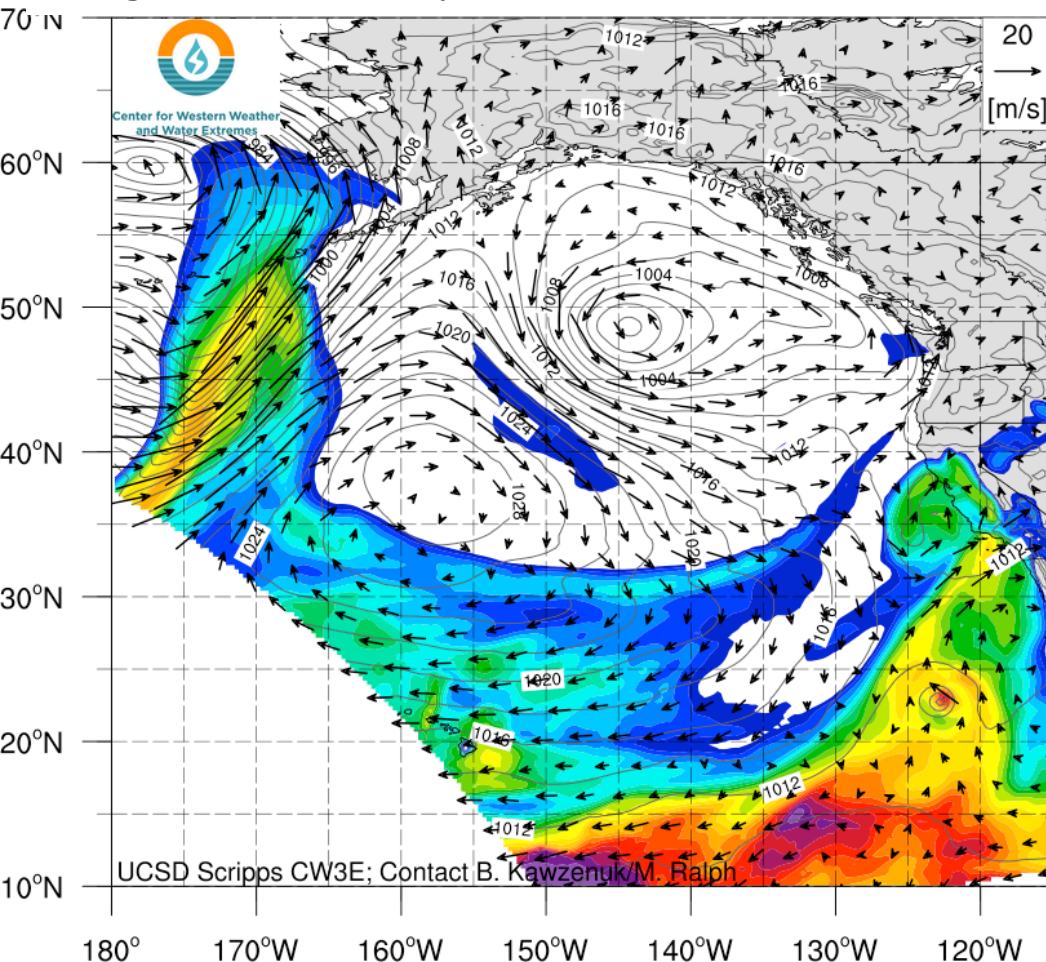
Far N. CA: 12+ in
Sierra Nevada: 8+ in
Northwestern NV: 1-2+ in

Images: cw3e.ucsd.edu
cw3e.ucsd.edu/?p=5605

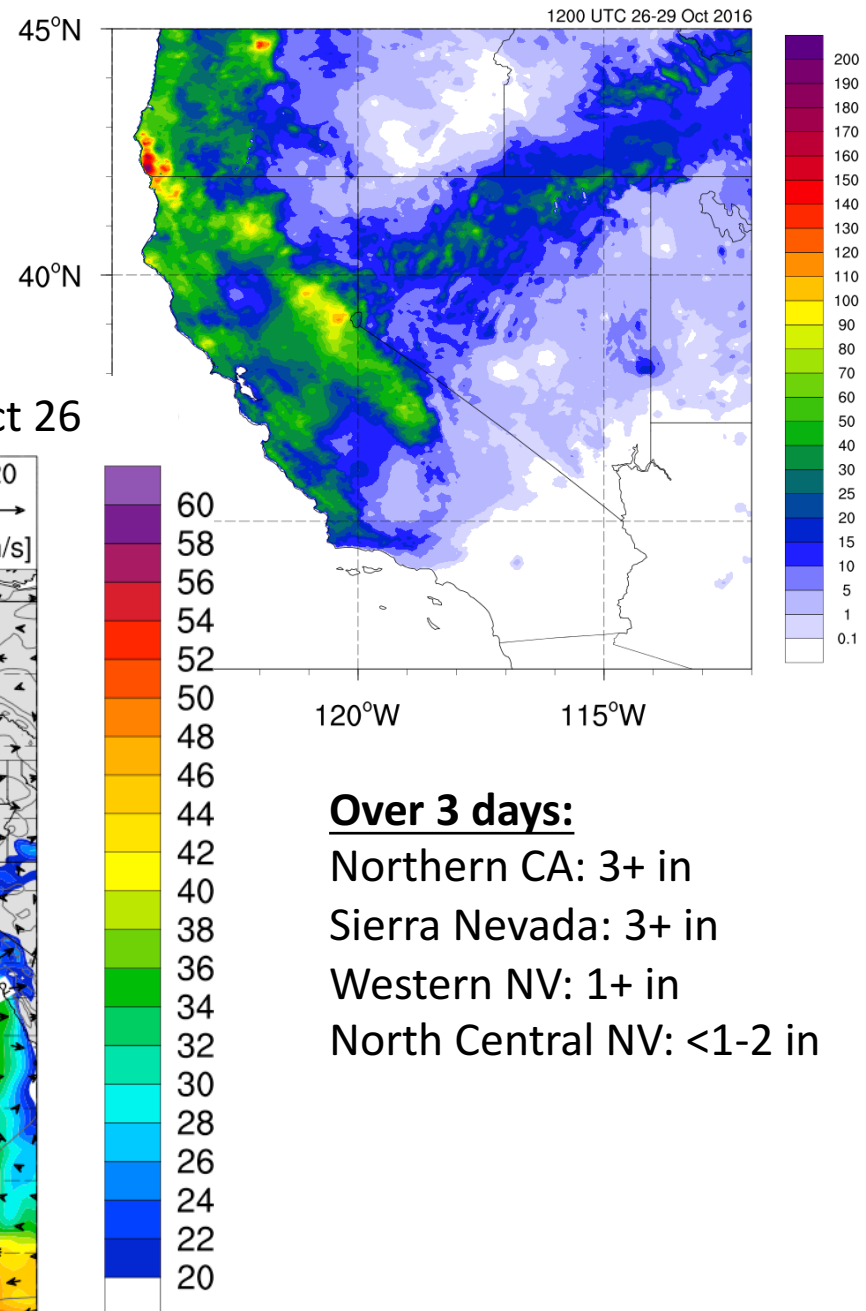
Oct 27-28:

- Late season Hurricane Seymour moisture entrained into low pressure system

Integrated Water Vapor and Sea Level Pressure Oct 26



72-h Accumulated Precipitation (mm)



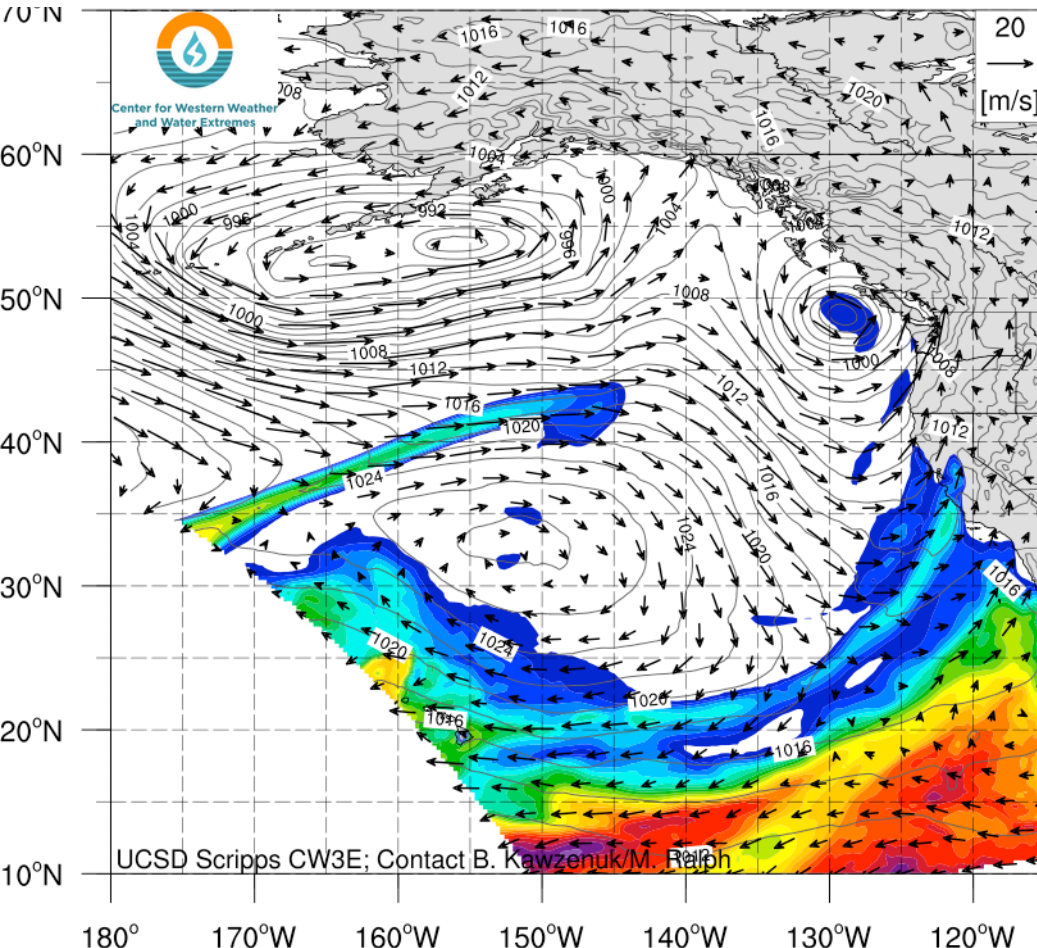
Over 3 days:

Northern CA: 3+ in
Sierra Nevada: 3+ in
Western NV: 1+ in
North Central NV: <1-2 in

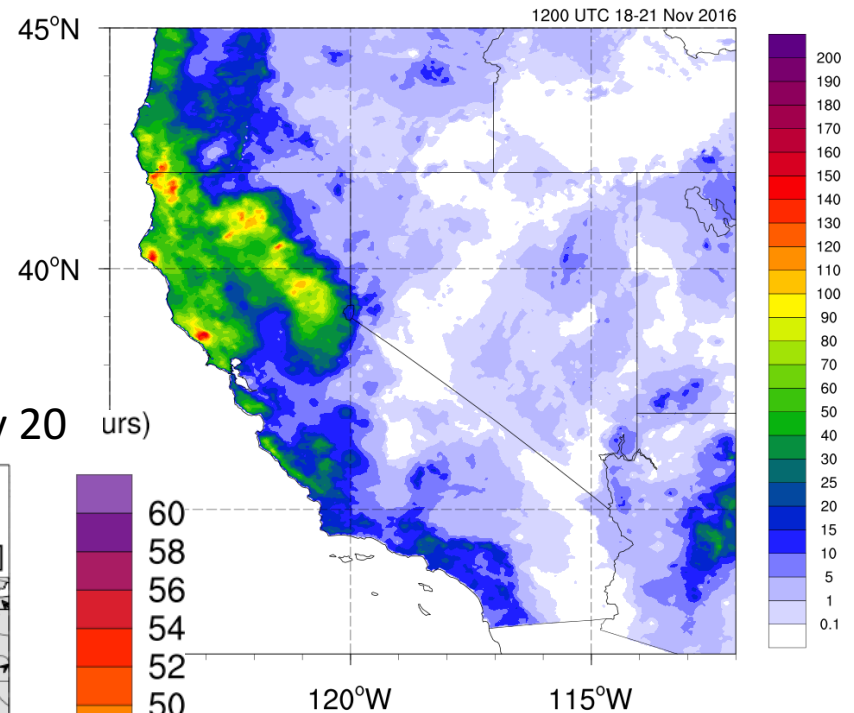
Nov 20:

- Weak atmospheric river
- Brought rainfall to southern CA- finally!
- Over an inch for Central/South Coast!

Integrated Water Vapor and Sea Level Pressure Nov 20



72-h Accumulated Precipitation (mm)



Over 3 days:

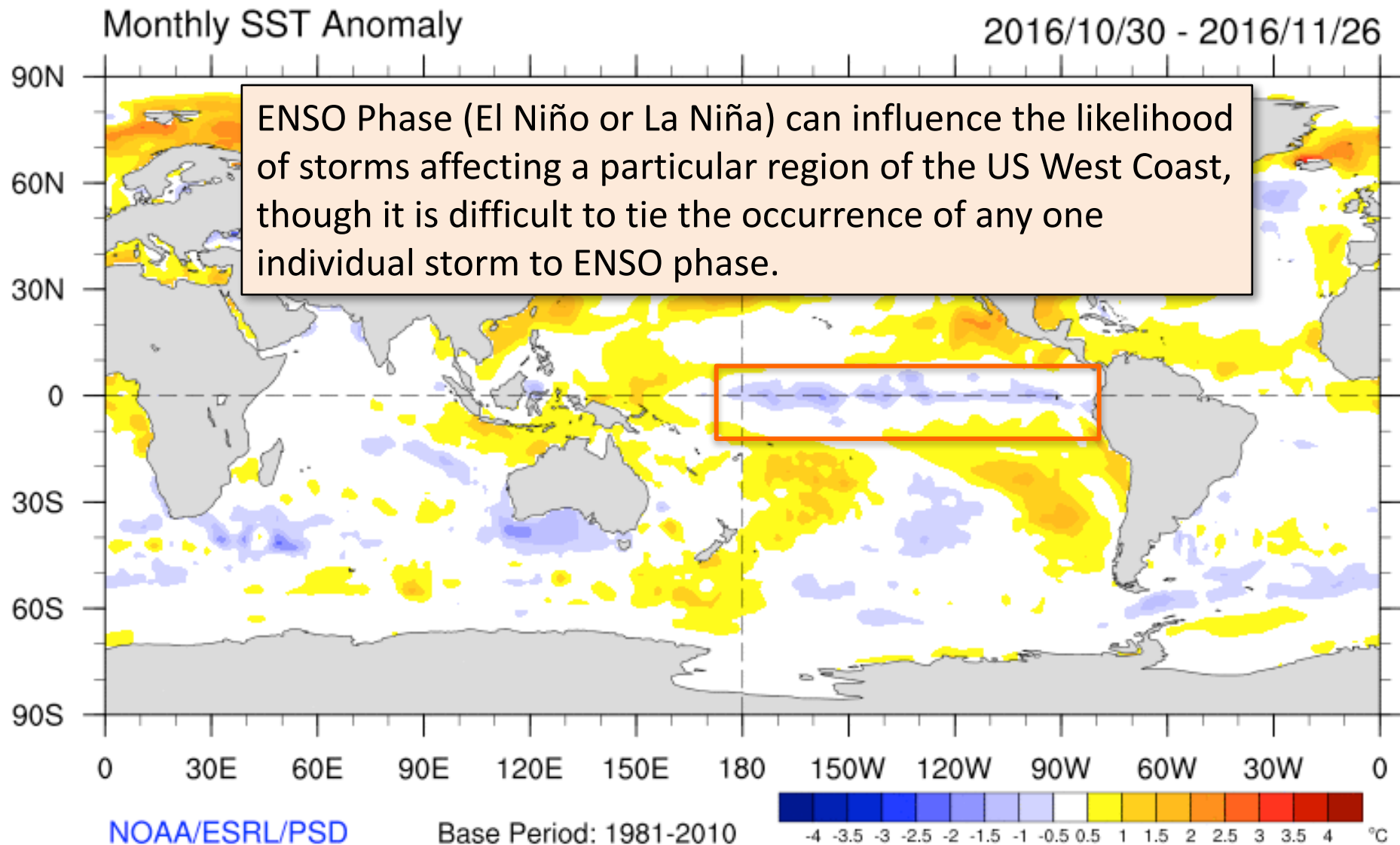
Northern CA: 4+ in

N. Sierra Nevada: 3+ in

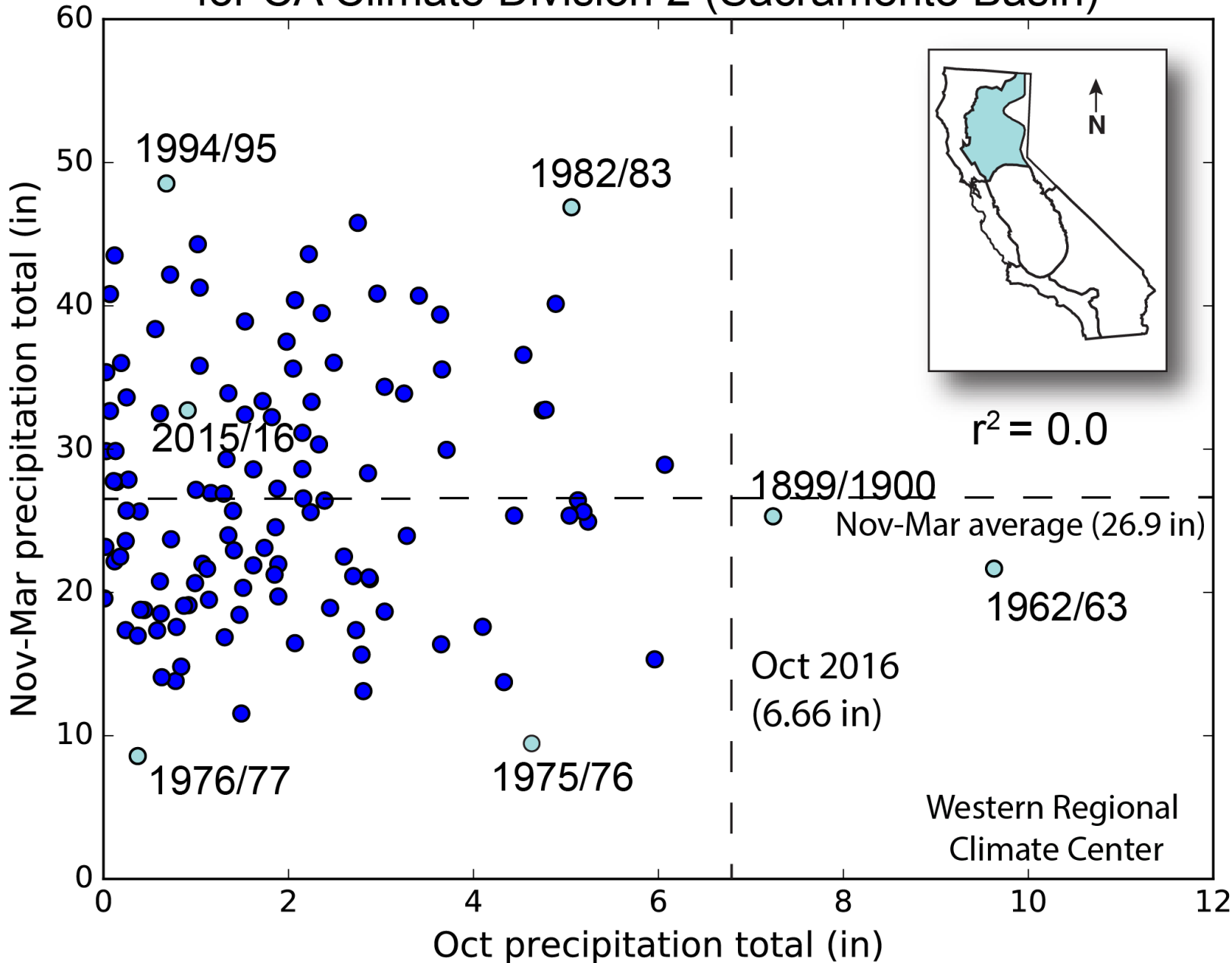
Nevada: <0.5 in

Southern CA: 0.5-1+ in

Are these early season storms “La Niña”?



October versus November-March precipitation 1895-2016 for CA Climate Division 2 (Sacramento Basin)



October versus November-March precipitation 1895-2016 for NV Climate Division 1 (Northwest)

