

Pacific Northwest Drought Early Warning System



October 2017 Drought & Climate Outlook



Northwest Climate Hub
U.S. DEPARTMENT OF AGRICULTURE



Agenda

- **Welcome & Intro to NIDIS and PNW DEWS**
 - Kathie Dello, CIRC
- **Climate Recap Covering Last Year's Water Year**
 - Kathie Dello, CIRC
- **Climate Outlook**
 - Troy Lindquist, NWS Boise
- **Overview of Oregon's Place Based Water Planning Program**
 - Steve Parrett, OR Water Resources Department
- **USDA Climate Hub Update**
 - Holly Prendeville, NW Climate Hub
- **Climate, wildfire, and erosion ensemble foretells more sediment in western USA watersheds**
 - Joel Sankey, USGS

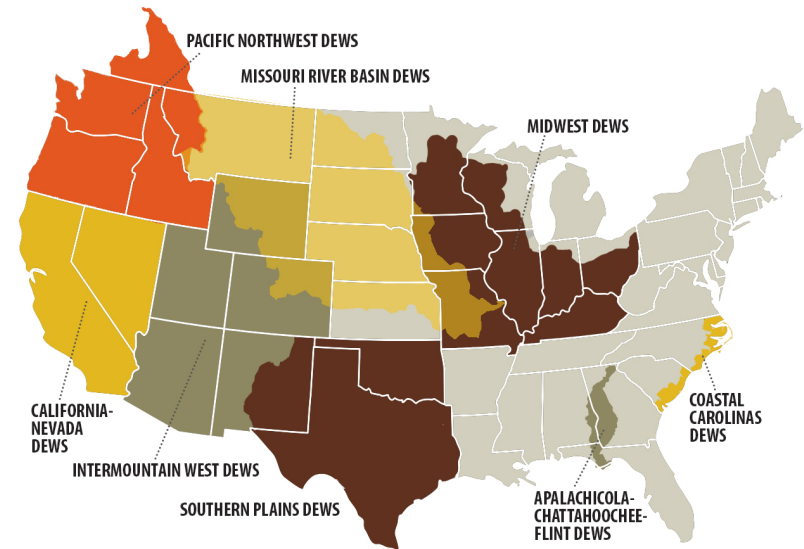


Northwest Climate Hub
U.S. DEPARTMENT OF AGRICULTURE



What is the National Integrated Drought Information System?

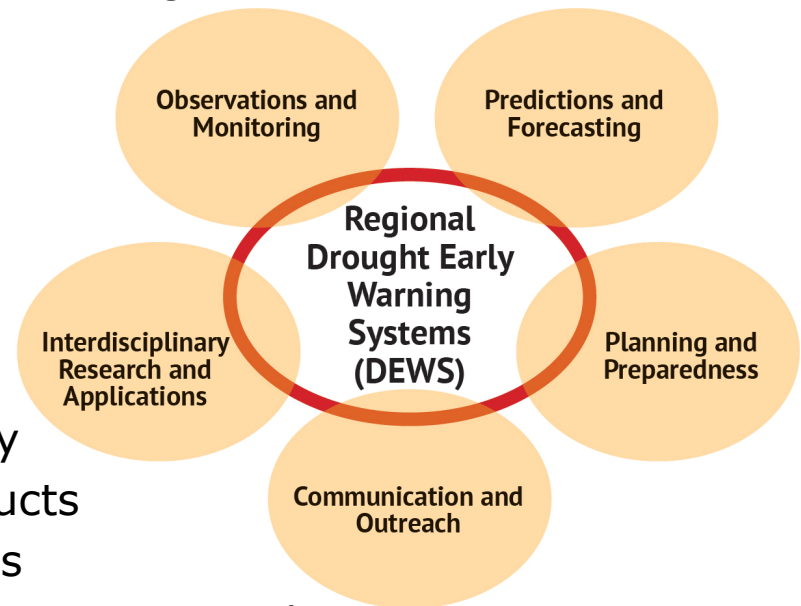
- Provide a better understanding of how and why droughts affect society, the economy and the environment.
- Improve accessibility, dissemination and use of early warning information for drought risk management.
- Build off of a network of regional Drought Early Warning Systems (DEWS) to create a National Drought Early Warning System.



Regional Drought Early Warning Systems (DEWS)

Working with communities and existing networks to build capacity for better decision making for drought planning and mitigation.

- Research & monitoring
- Drought & risk assessments
- Drought & Climate Outlook Forums
- Education and outreach webinars
- Engaging the preparedness community
- Builds capacity to utilize existing products
 - Provide test beds for new products
- Develop new/utilize existing communication networks



Pacific Northwest DEWS

- PNW DEWS was officially launched in February 2016
- Strategic plan is available on drought.gov
 - Provide a roadmap for moving forward with the PNW DEWS
 - Identifies existing and new drought-related activities in the region
 - Living document with a two-year time frame
 - Priority Areas include:
 - Improving monitoring and research for drought risk management
 - Expanding drought early warning communications and outreach
 - Optimizing information and collaborative networks
 - Enhancing drought planning & mitigation



PNW DEWS Region



Mark your calendars...

PNW DEWS Water Year 2018 outlooks

- October 30: Olympia, WA
 - With CIRC, CIG, WA Department of Ecology
- November 2: Boise, ID
 - With CIRC, IDWR, NRCS, USBR, Idaho Power, USACE

Register: <https://www.drought.gov/drought/calendar/events/climate-water-meeting-2018-water-year-oct-30-2017>

<https://www.drought.gov/drought/calendar/events/climate-water-meeting-2018-water-year-nov-2-2017>



Mark your calendars...

PNW DEWS Drought & Climate Outlook Webinar Series

- Bi-monthly webinar series hosted by NIDIS, CIRC, NW Climate Hub, NWS Western Region, etc.
- Designed to provide stakeholders and other interested parties in the Pacific Northwest timely drought and climate information.
- Each webinar will be tailored to reflect recent, current and forecasted conditions and climatic events, but will also include discussions of observed impacts and other relevant updates from across the region.
- Webinars and recordings and other supporting materials will be posted on drought.gov.

Next webinar is December 18th at 11am PDT

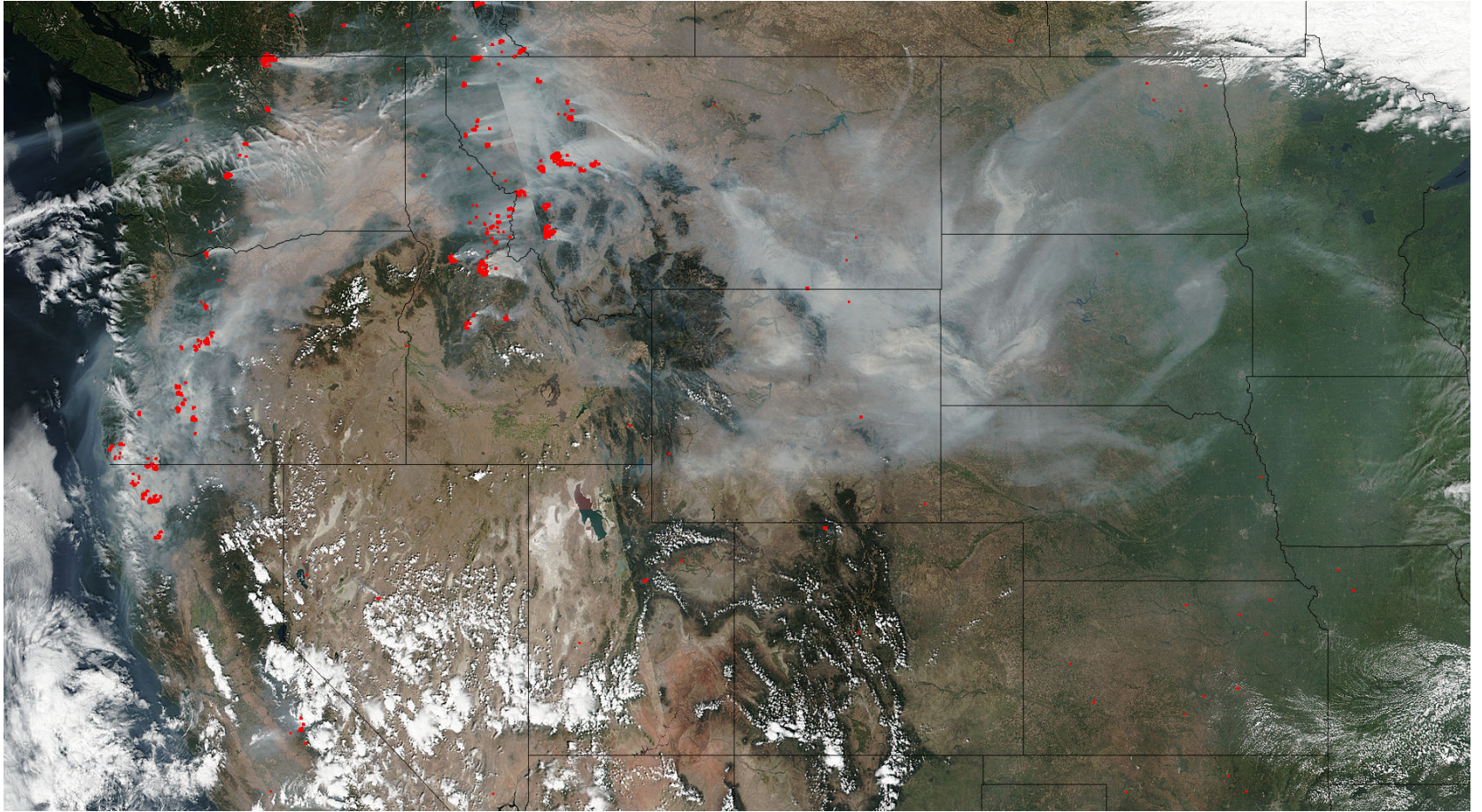
Register: <https://attendee.gotowebinar.com/register/1006527415019204353>



A recap of the 2017 water year in the PNW

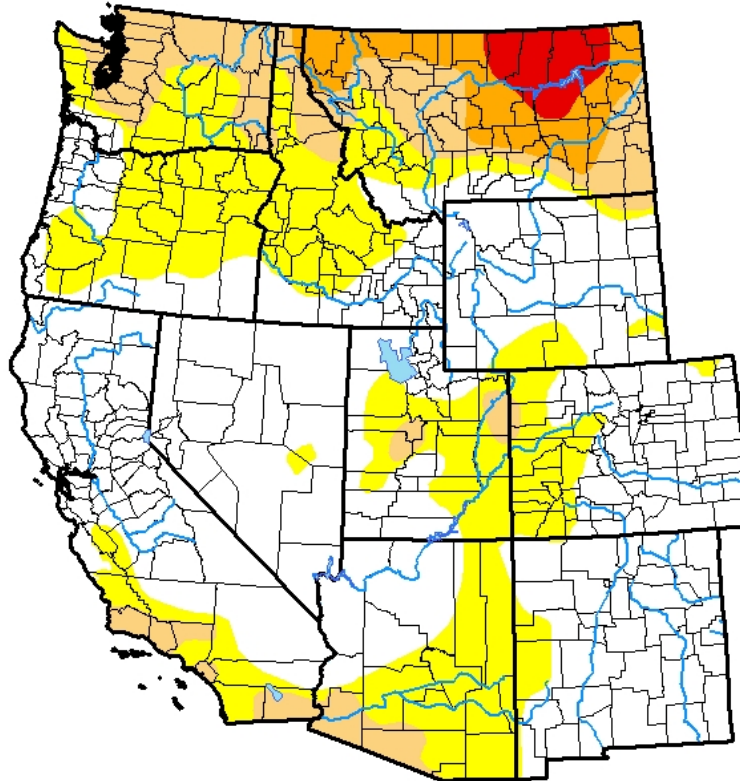
Kathie Dello

PNW Climate Impacts Research Consortium
Oregon State University



U.S. Drought Monitor West

October 17, 2017
(Released Thursday, Oct. 19, 2017)
Valid 8 a.m. EDT



Intensity:

-  D0 Abnormally Dry
-  D1 Moderate Drought
-  D2 Severe Drought
-  D3 Extreme Drought
-  D4 Exceptional Drought

The Drought Monitor focuses on broad-scale conditions. Local conditions may vary. See accompanying text summary for forecast statements.

Author:

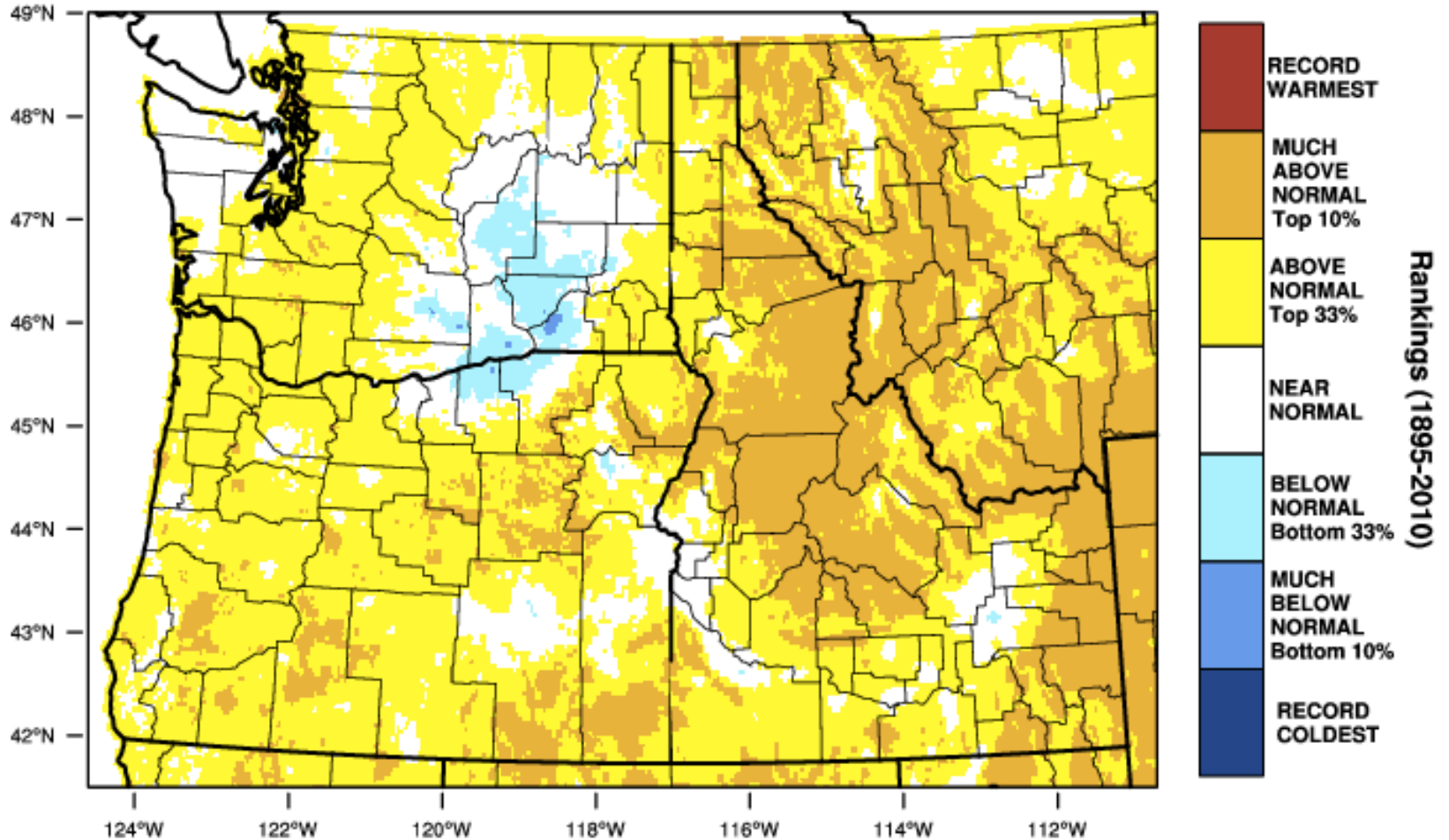
Jessica Blunden
NCEI/NOAA



<http://droughtmonitor.unl.edu/>

Pacific Northwest - Mean Temperature

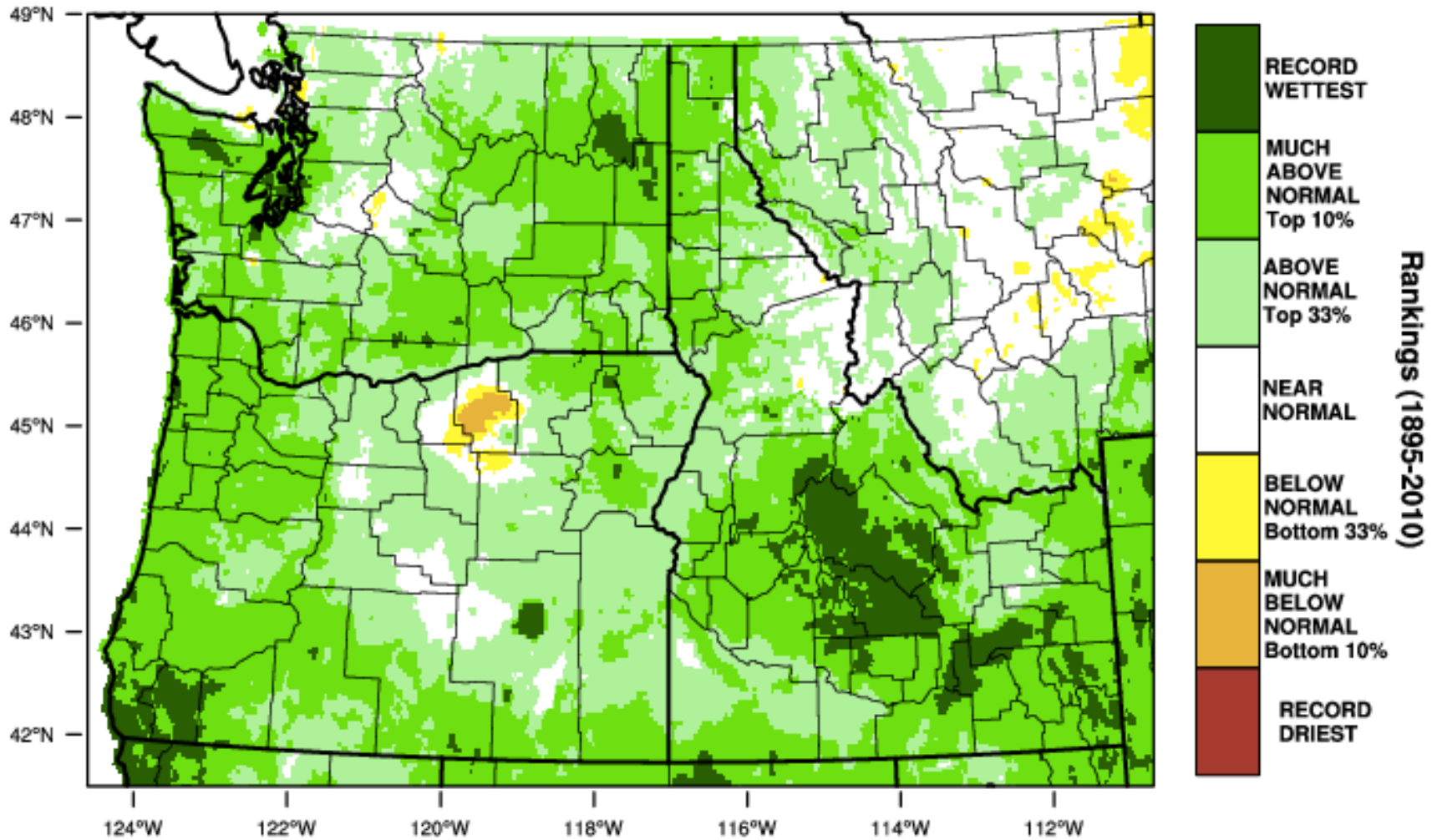
October-September 2017 Percentile



WestWide Drought Tracker - U Idaho/WRCC Data Source - PRISM (Prelim), created 16 OCT 2017

Pacific Northwest - Precipitation

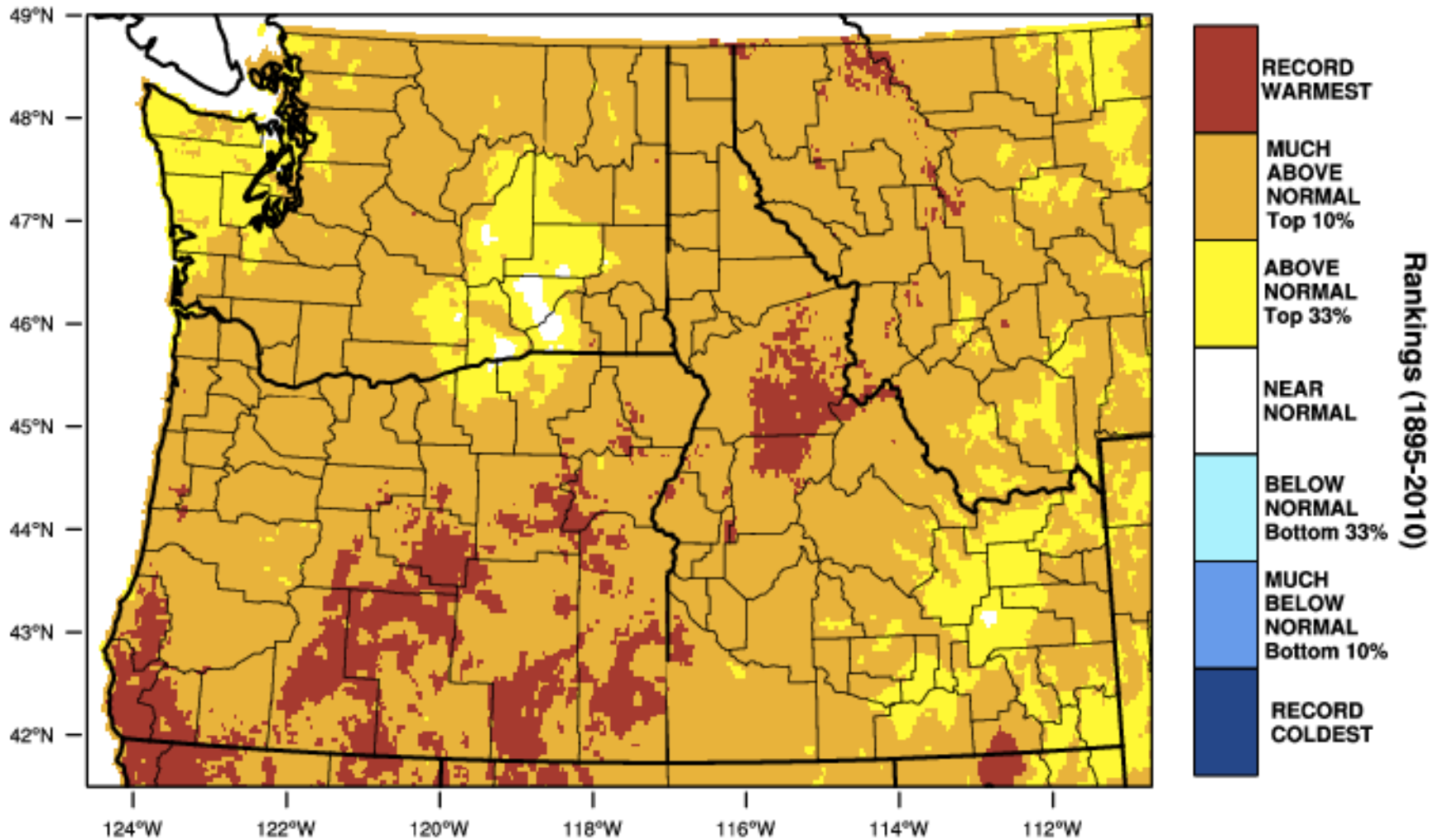
October-September 2017 Percentile



WestWide Drought Tracker - U Idaho/WRCC Data Source - PRISM (Prelim), created 16 OCT 2017

Pacific Northwest - Mean Temperature

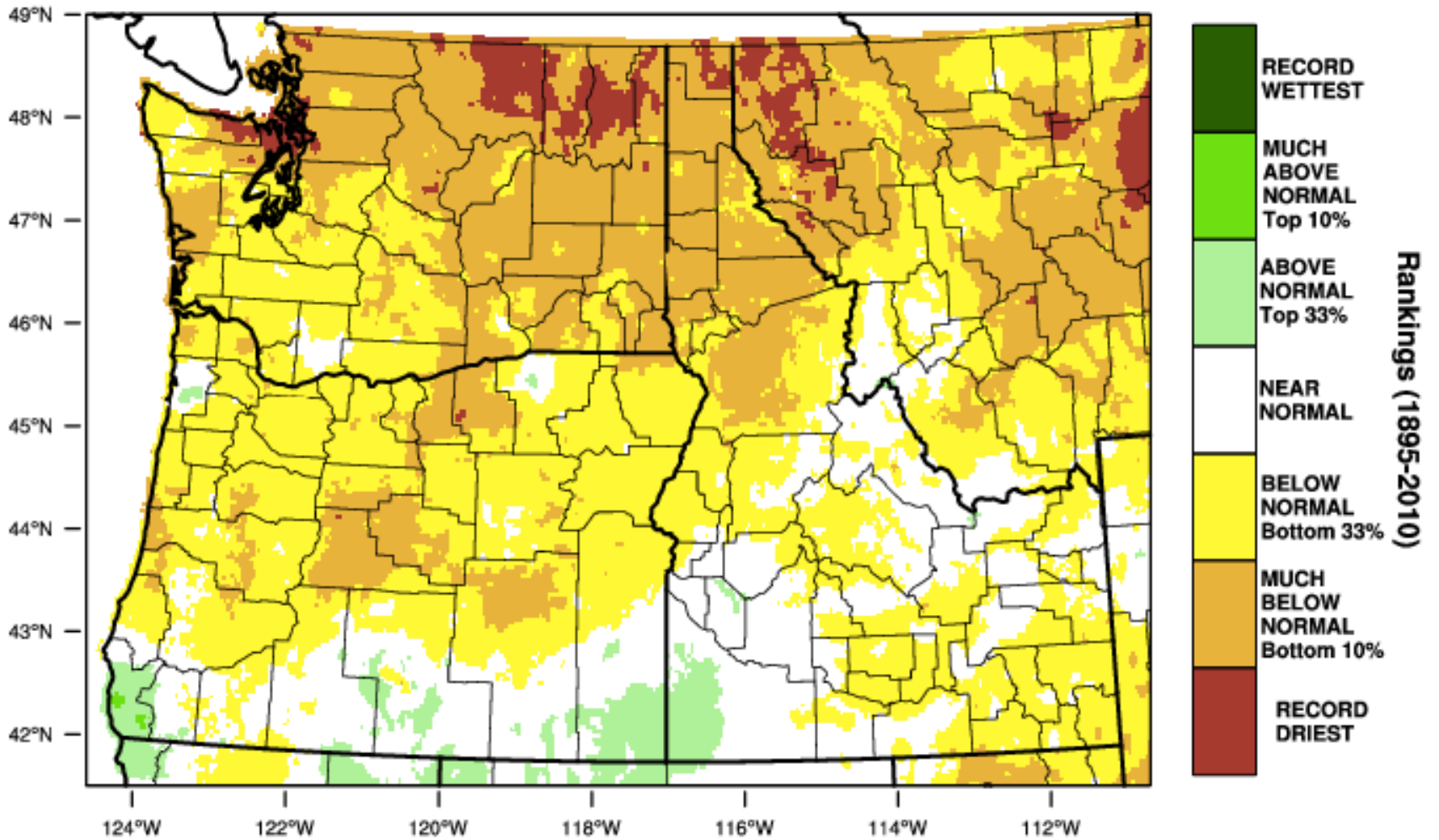
June-August 2017 Percentile



WestWide Drought Tracker - U Idaho/WRCC Data Source - PRISM (Prelim), created 16 SEP 2017

Pacific Northwest - Precipitation

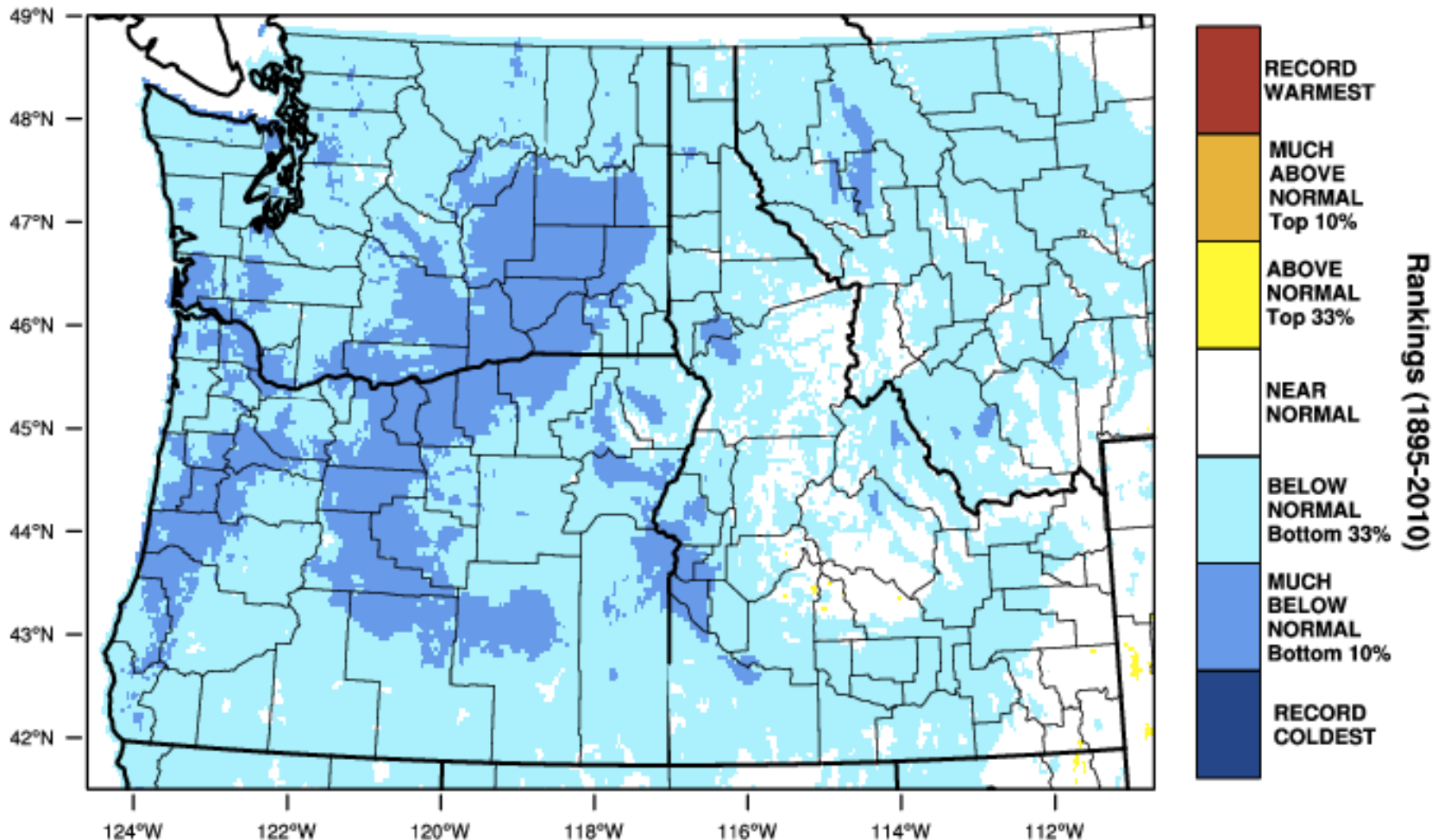
June-August 2017 Percentile



WestWide Drought Tracker - U Idaho/WRCC Data Source - PRISM (Prelim), created 16 SEP 2017

Pacific Northwest - Mean Temperature

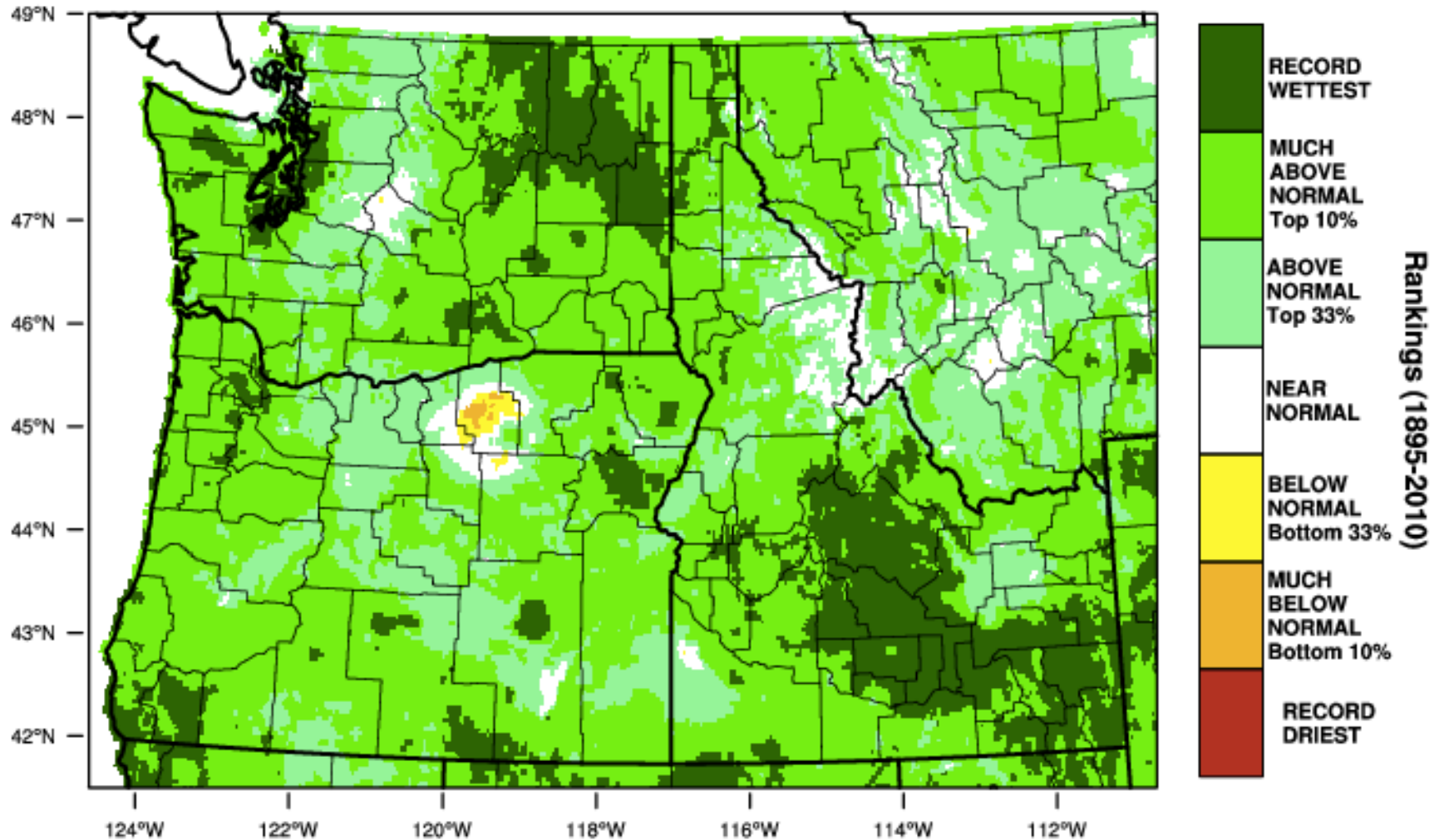
December-February 2017 Percentile



WestWide Drought Tracker - U Idaho/WRCC Data Source - PRISM (Prelim), created 16 SEP 2017

Pacific Northwest - Precipitation

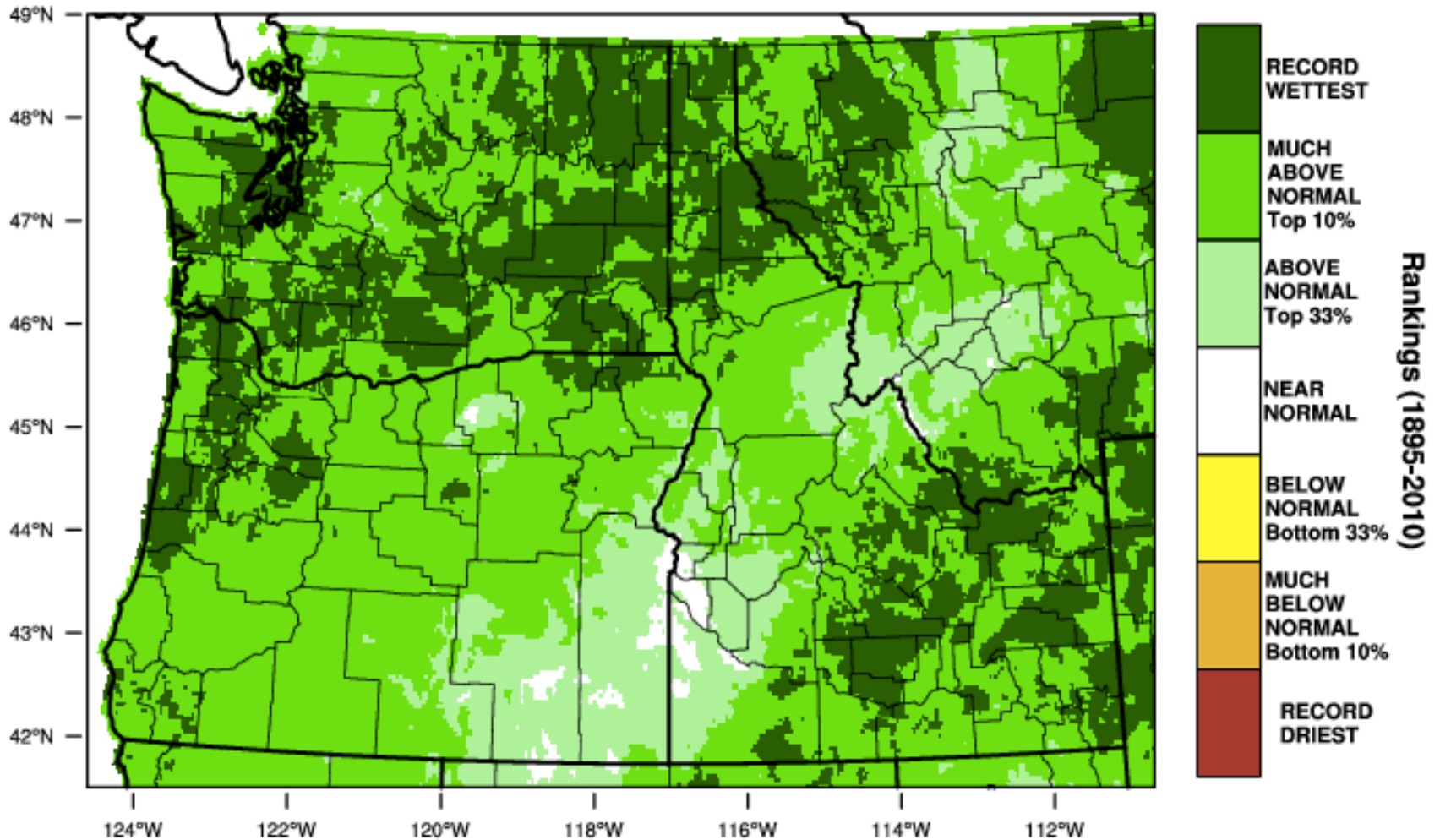
October-May 2017 Percentile



WestWide Drought Tracker - U Idaho/WRCC Data Source - PRISM (Prelim), created 16 JUN 2017

Pacific Northwest - Precipitation

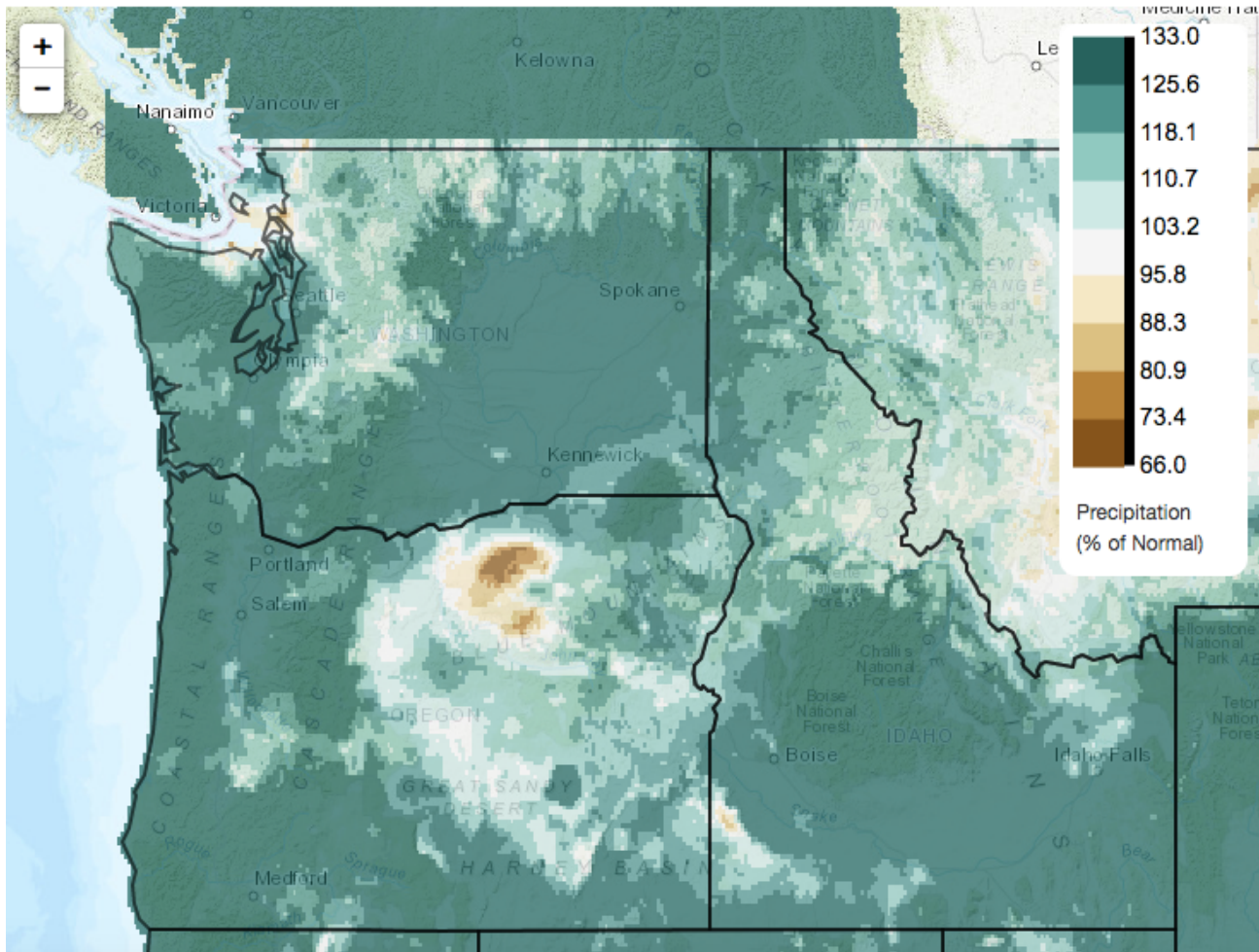
October 2016 Percentile



WestWide Drought Tracker - U Idaho/WRCC Data Source - PRISM (Prelim), created 25 MAY 2017

Current Water Year Precipitation Anomaly (% of 1981-2010 Normal)

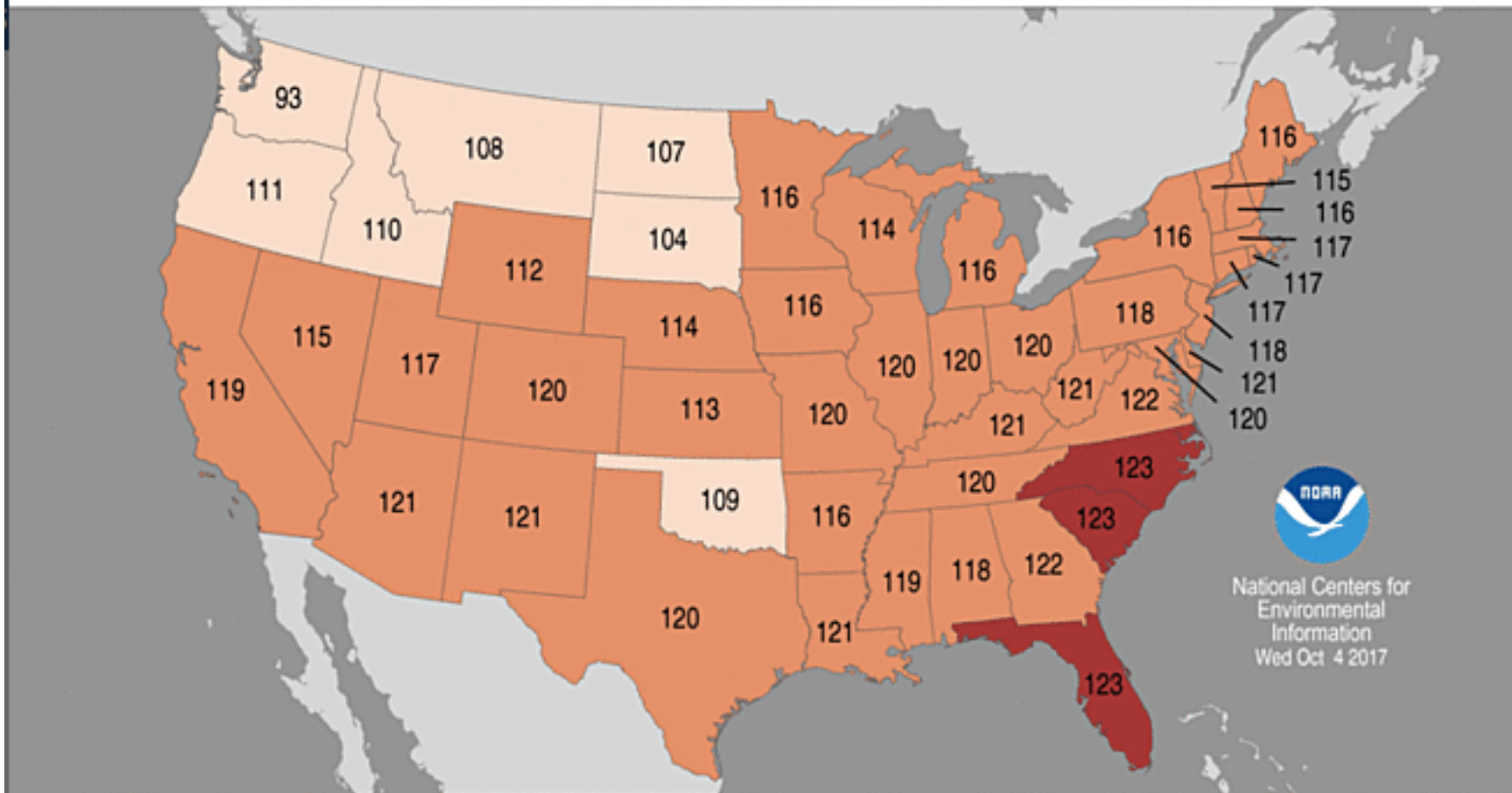
2017/10/01 - 2017/10/21



Statewide Average Temperature Ranks

January–September 2017

Period: 1895–2017



National Centers for
Environmental
Information
Wed Oct 4 2017

Record
Coldest
(1)

Much
Below
Average

Below
Average

Near
Average

Above
Average

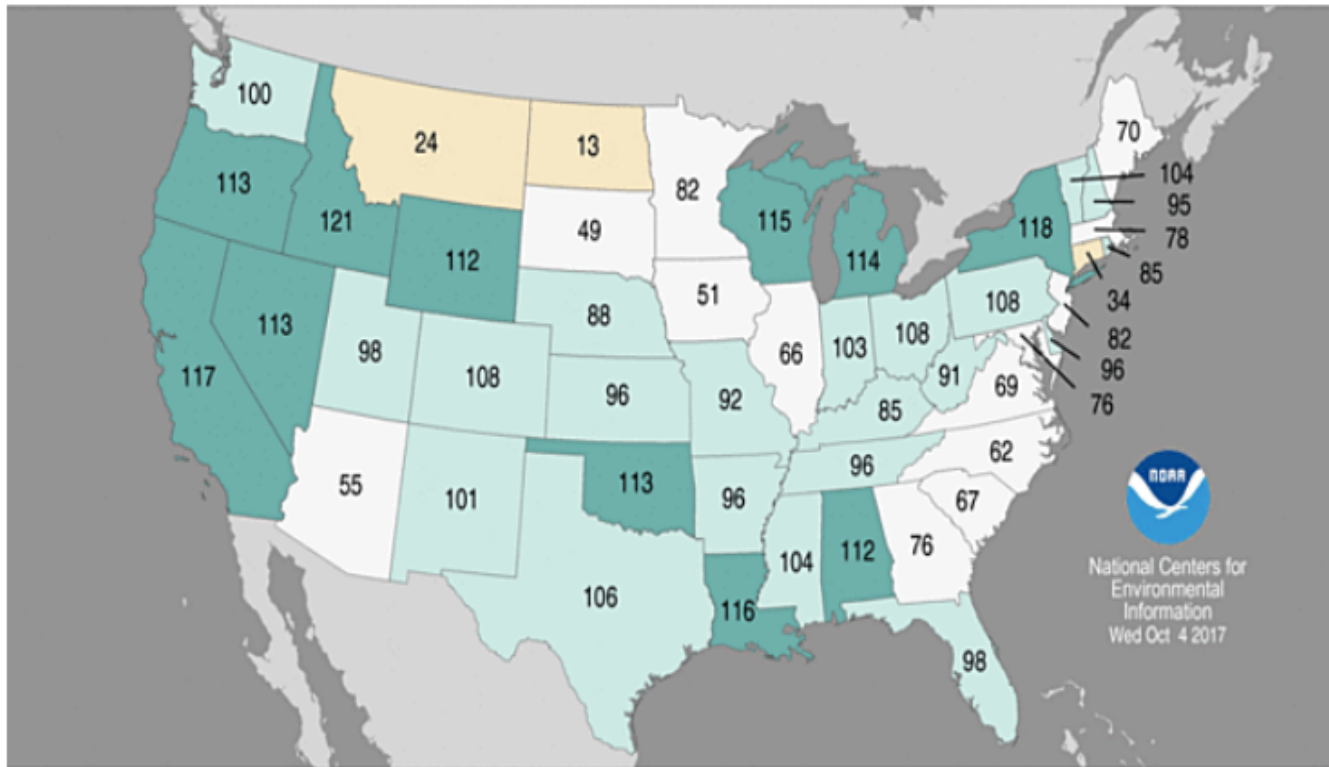
Much
Above
Average

Record
Warmest
(123)

Statewide Precipitation Ranks

January–September 2017

Period: 1895–2017



National Centers for
Environmental
Information
Wed Oct 4 2017

Map sources

- West wide drought tracker
 - <https://wrcc.dri.edu/wwdt/>

- NW Climate Toolbox
 - [Climatetoolbox.org](http://climatetoolbox.org)