

climate update

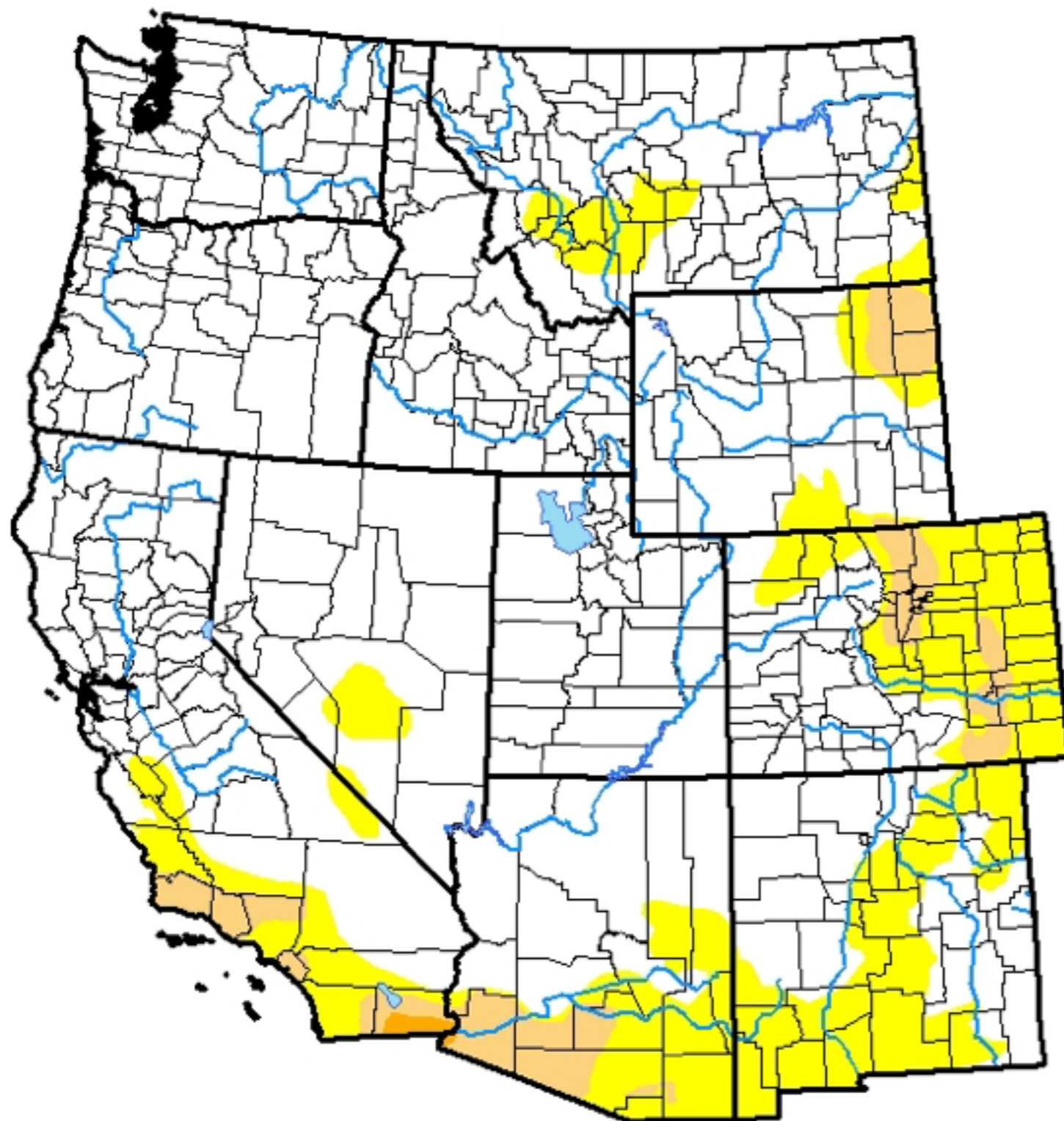
Kathie Dello

PNW Climate Impacts Research Consortium (CIRC)



U.S. Drought Monitor West

April 18, 2017
(Released Thursday, Apr. 20, 2017)
Valid 8 a.m. EDT



Intensity:

-  D0 Abnormally Dry
-  D1 Moderate Drought
-  D2 Severe Drought
-  D3 Extreme Drought
-  D4 Exceptional Drought

The Drought Monitor focuses on broad-scale conditions. Local conditions may vary. See accompanying text summary for forecast statements.

Author:

Chris Fenimore
NCEI/NESDIS/NOAA



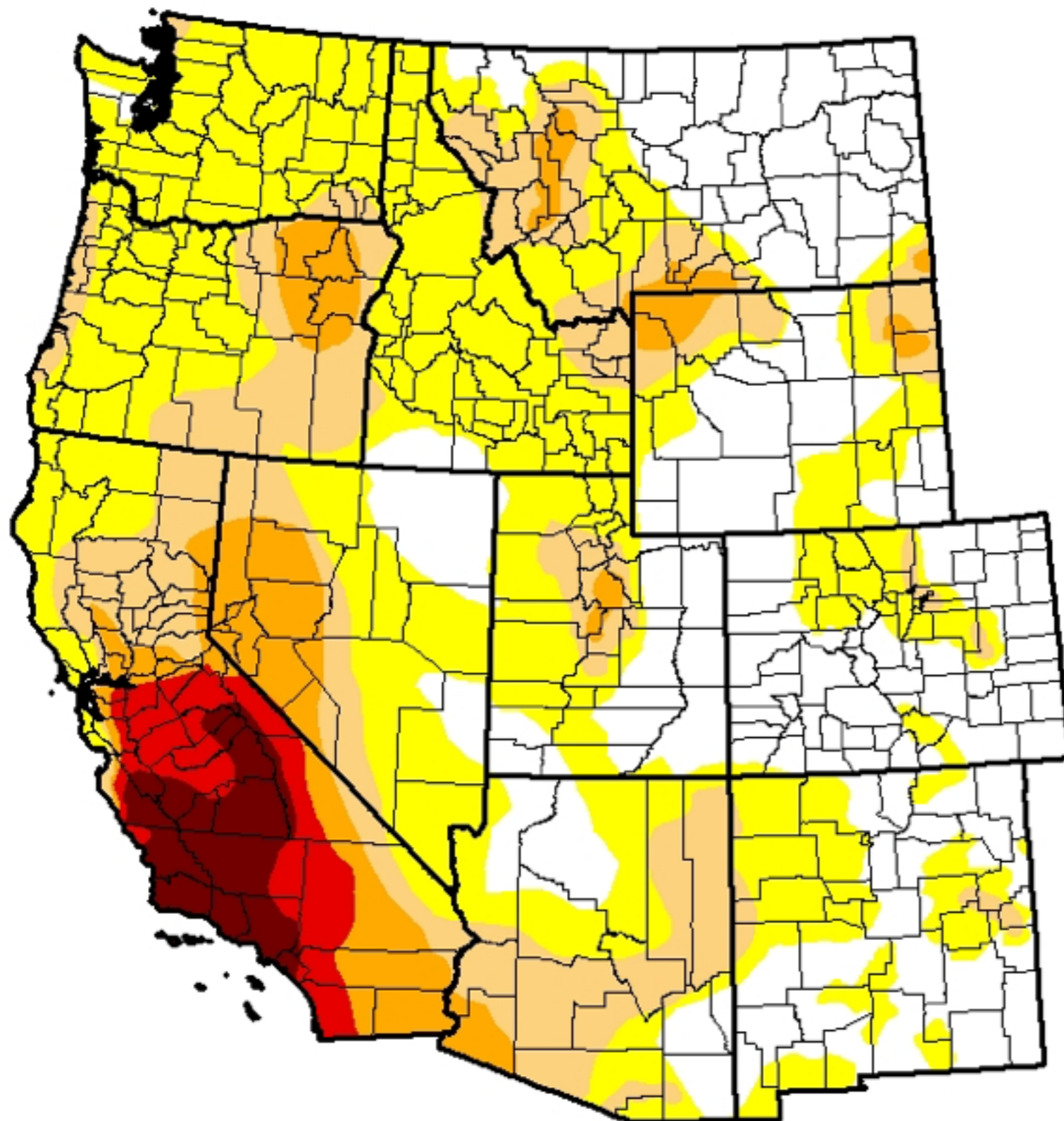
<http://droughtmonitor.unl.edu/>

U.S. Drought Monitor West

October 4, 2016

(Released Thursday, Oct. 6, 2016)

Valid 8 a.m. EDT



Intensity:

-  D0 Abnormally Dry
-  D1 Moderate Drought
-  D2 Severe Drought
-  D3 Extreme Drought
-  D4 Exceptional Drought

The Drought Monitor focuses on broad-scale conditions. Local conditions may vary. See accompanying text summary for forecast statements.

Author:

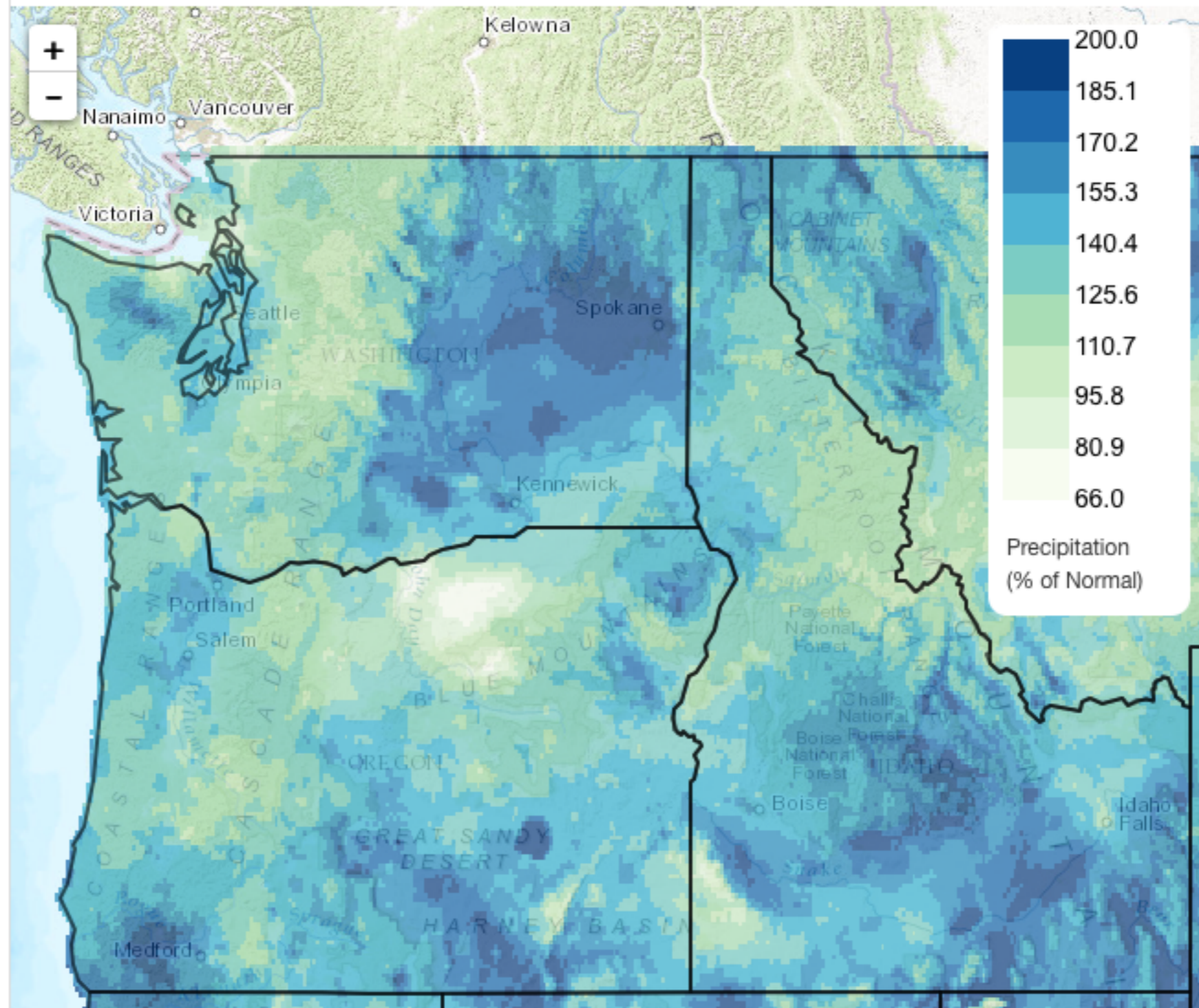
Brian Fuchs
National Drought Mitigation Center



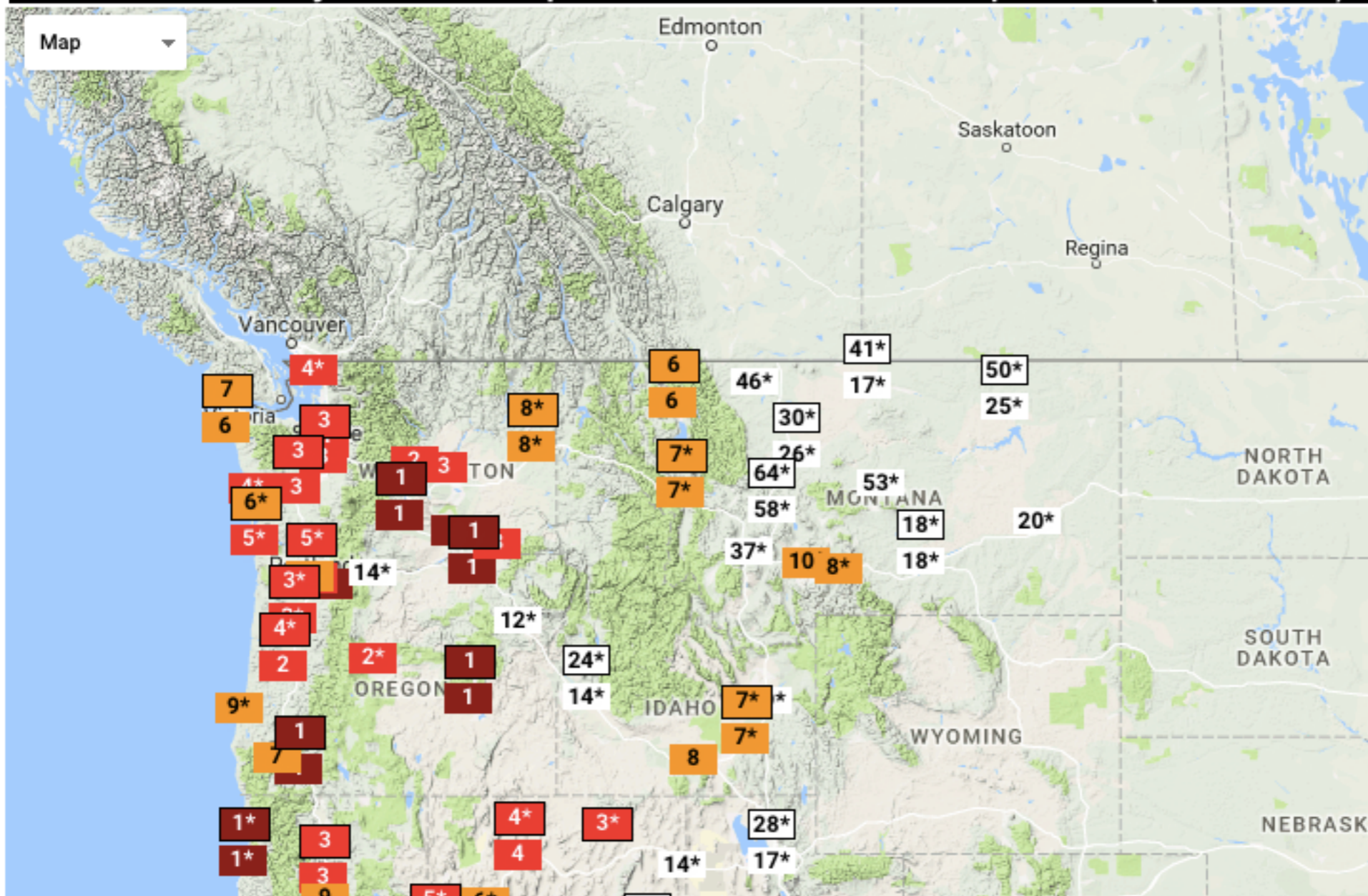
<http://droughtmonitor.unl.edu/>

Current Water Year Precipitation (% of Normal)

Data Source: [gridMET dataset \(U Idaho\)](#), 2016/10/01 - 2017/04/22



Observed Total Days of Total Precip >0.001in for Oct 22 2016 to Apr 22 2017 (174 stations)



Variable
Total Precip

Values
Days >0.001in

Date
Sat 4/22/2017

Period
Past Six Months

Station Display
Rankings
 Show ThreadEx [?]
Show Perspectives
[Export as CSV](#)

Legend Rank

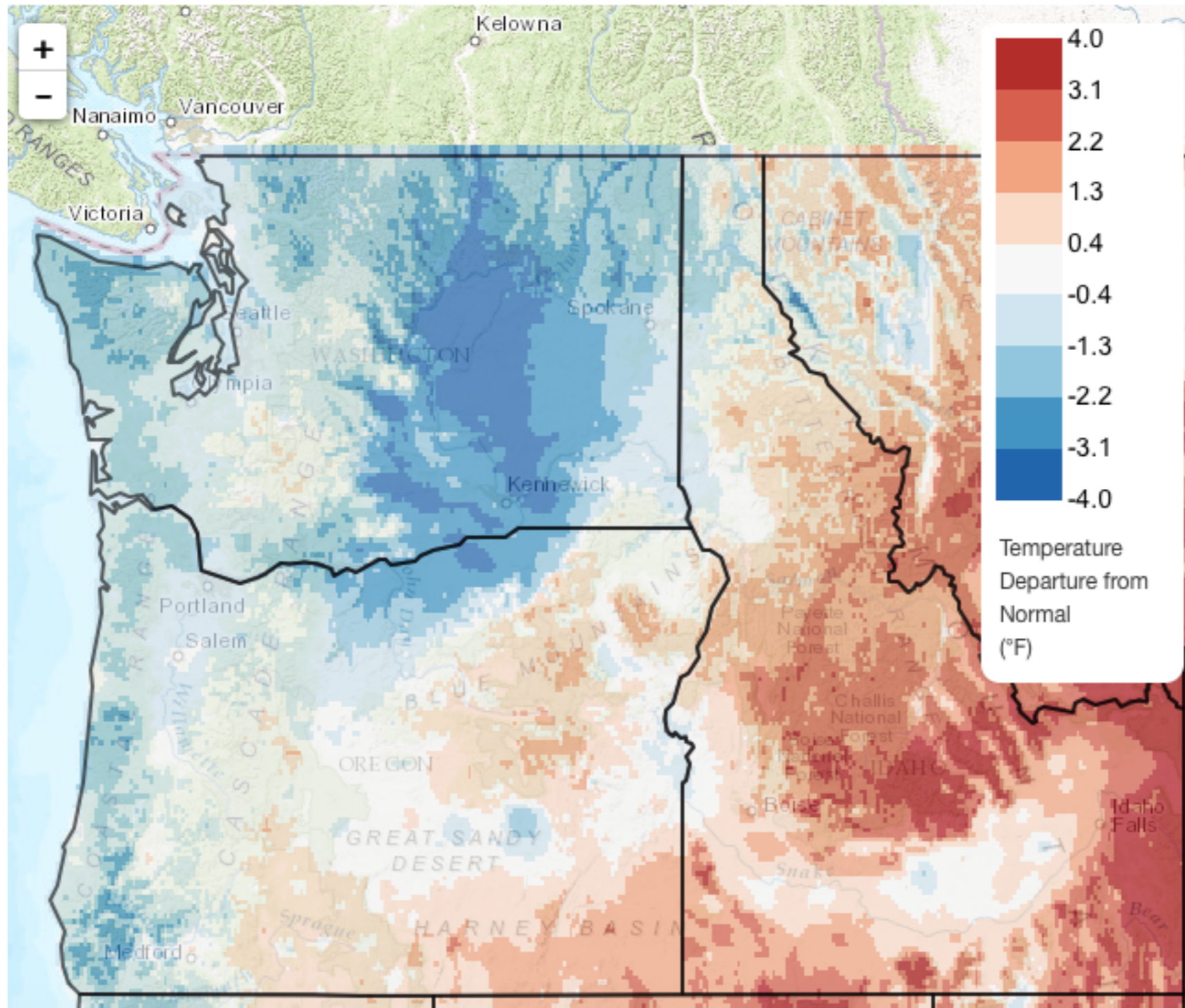
Dark Red	Highest
Red	2nd-5th
Orange	6th-10th
White	-
Blue	10th-6th
Pink	5th-2nd
Purple	Lowest

* Indicates tied ranking

Climate Perspectives

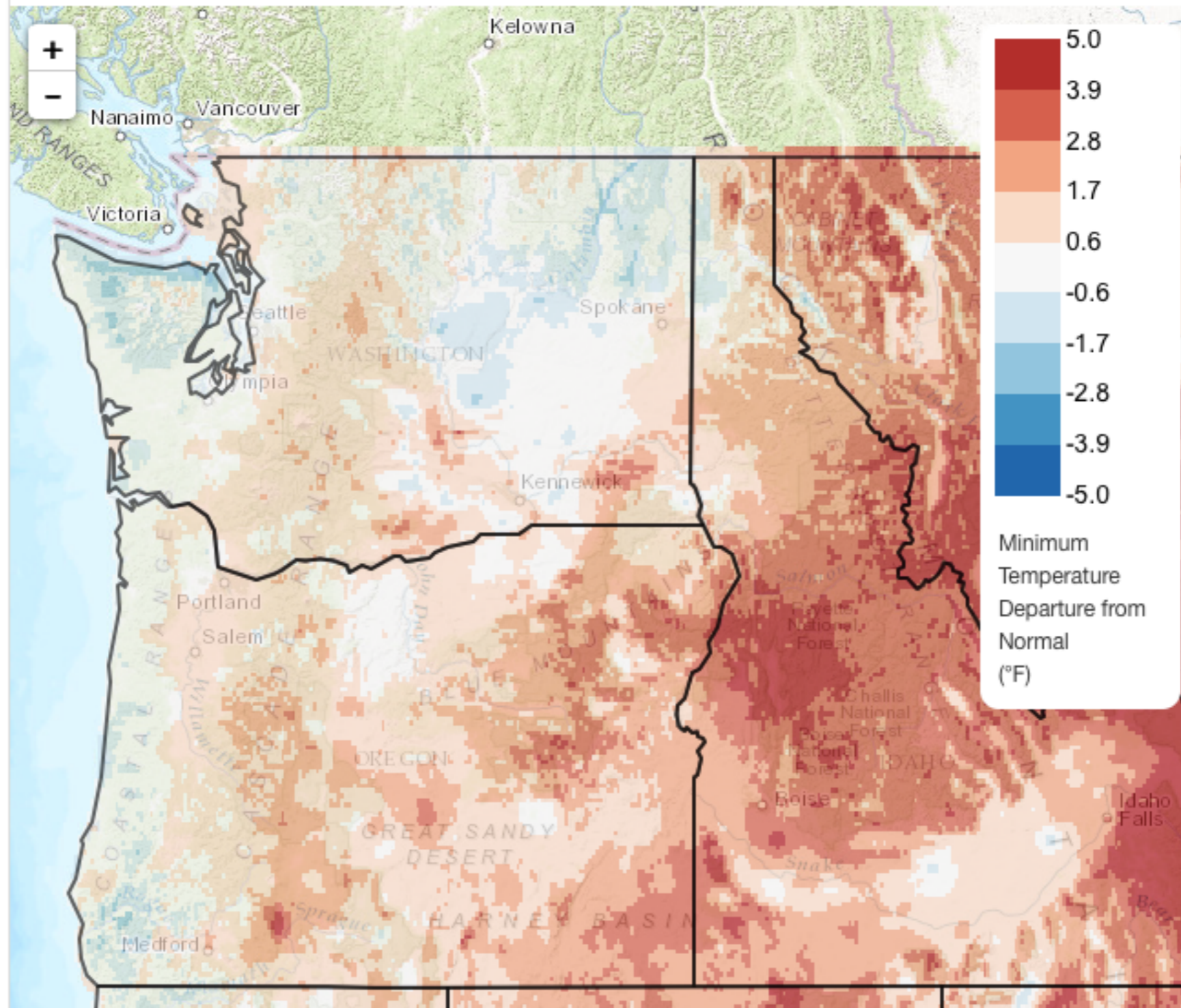
Last 90 Days Mean Temperature (Departure from Normal, Degrees F)

Data Source: [gridMET dataset \(U Idaho\)](#), 2017/01/23 - 2017/04/22



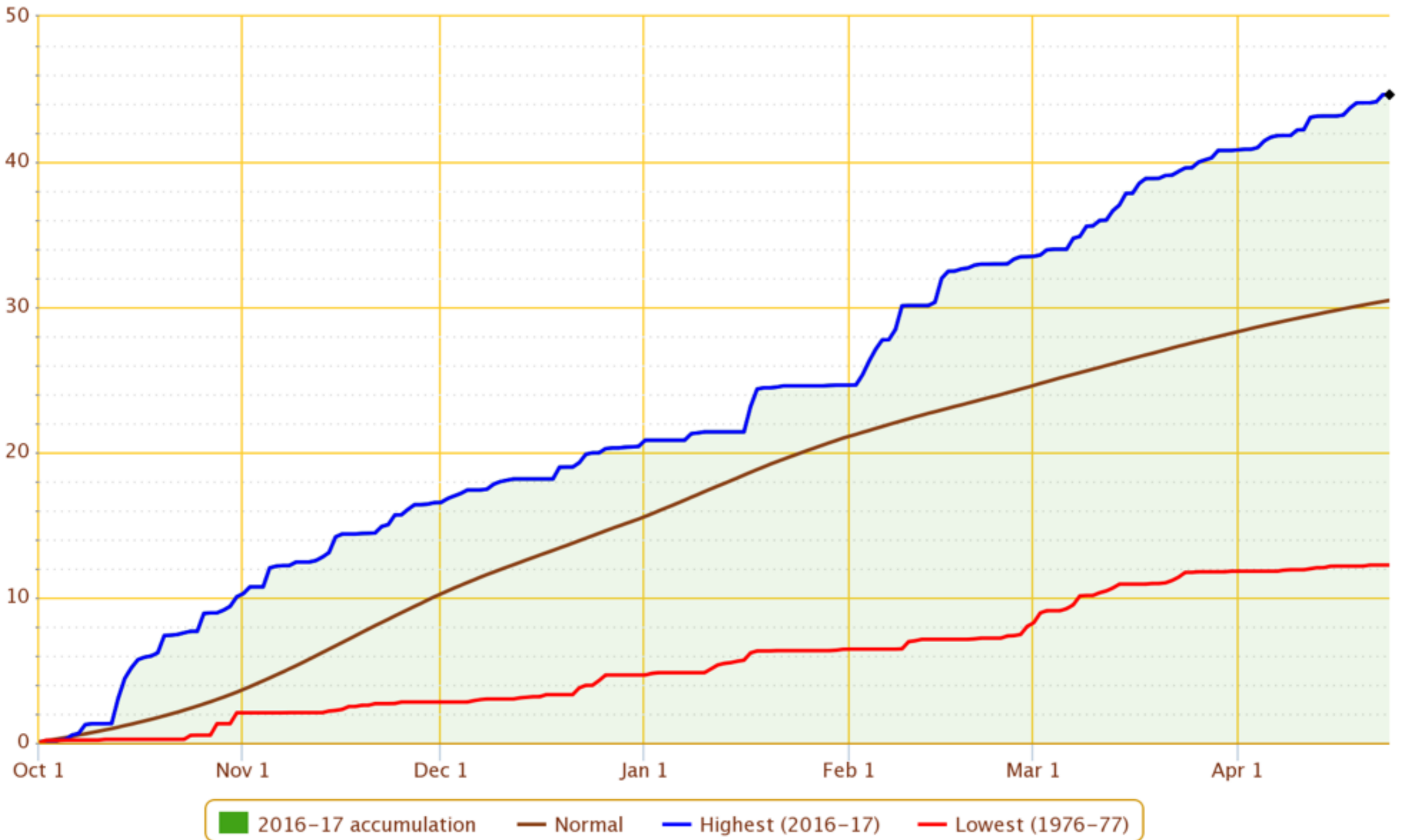
Last 60 Days Minimum Temperature (Departure from Normal, Degrees F)

Data Source: [gridMET dataset \(U Idaho\)](#), 2017/02/22 - 2017/04/22



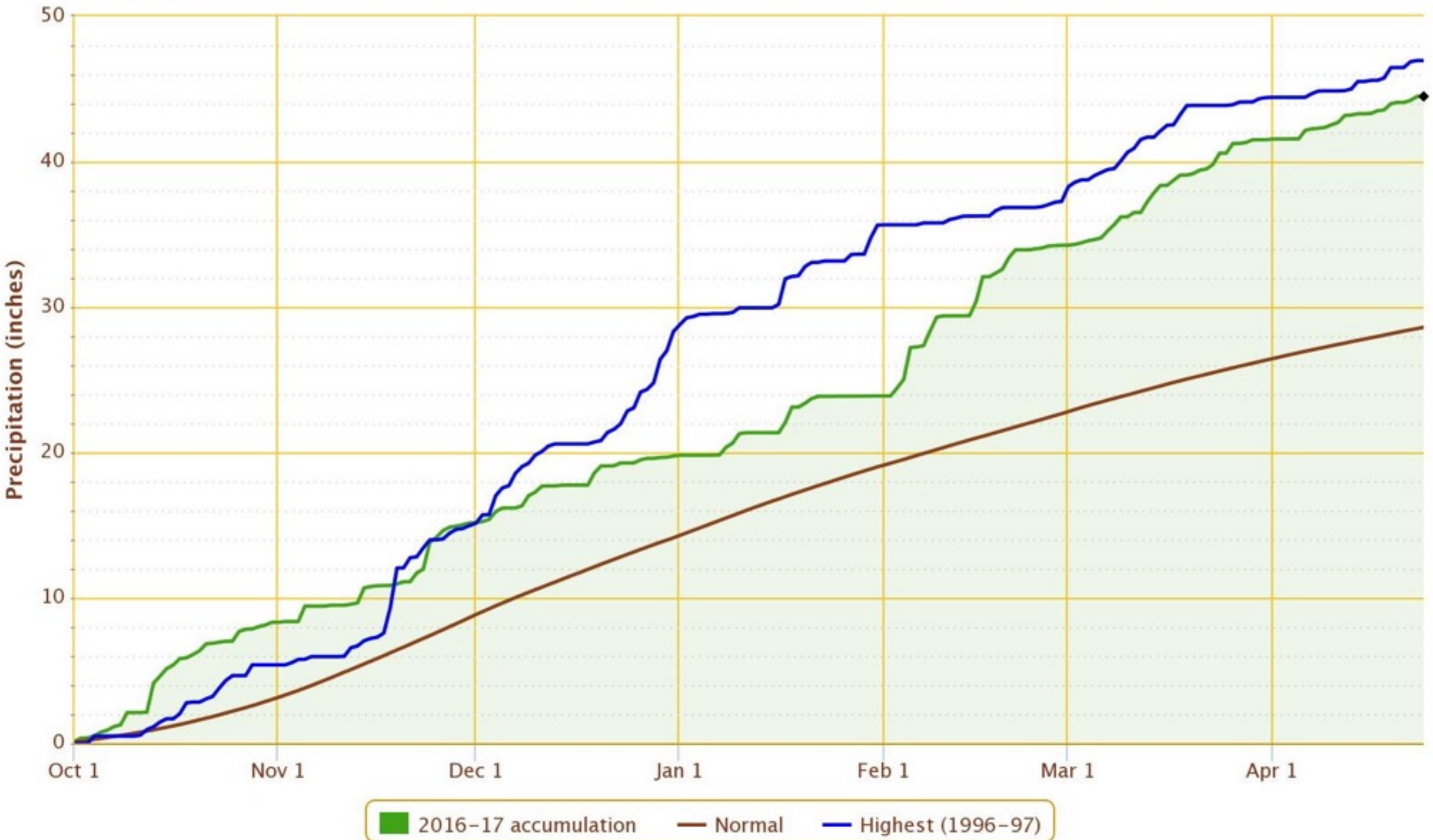
Accumulated Precipitation – SEATTLE TACOMA INTL AP, WA

Click and drag to zoom to a shorter time interval; green/black diamonds represent subsequent/missing values



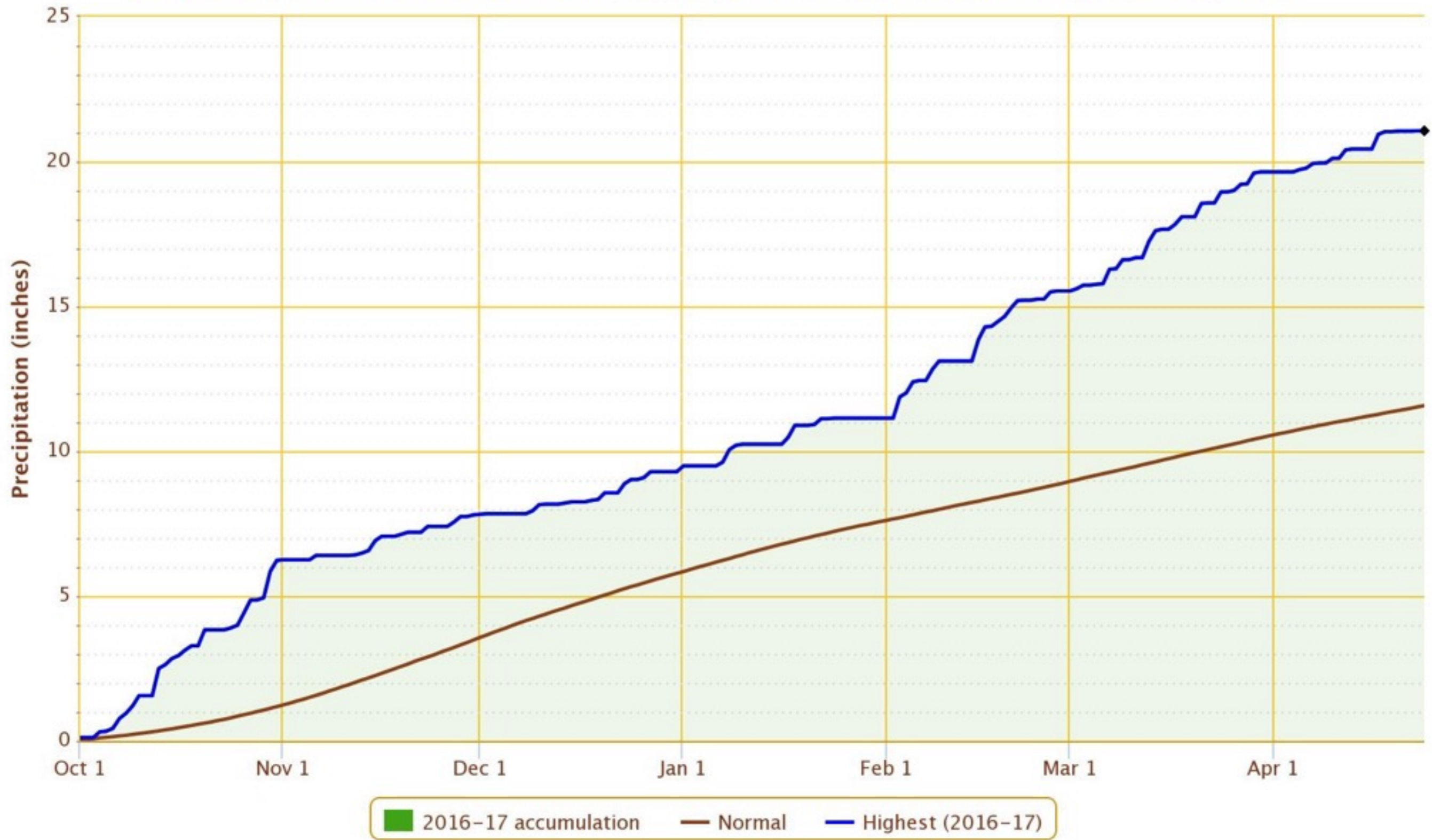
Accumulated Precipitation – PORTLAND INTL AP, OR

Click and drag to zoom to a shorter time interval; green/black diamonds represent subsequent/missing values



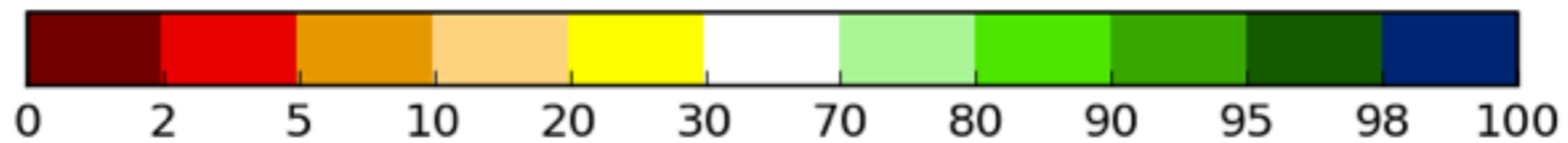
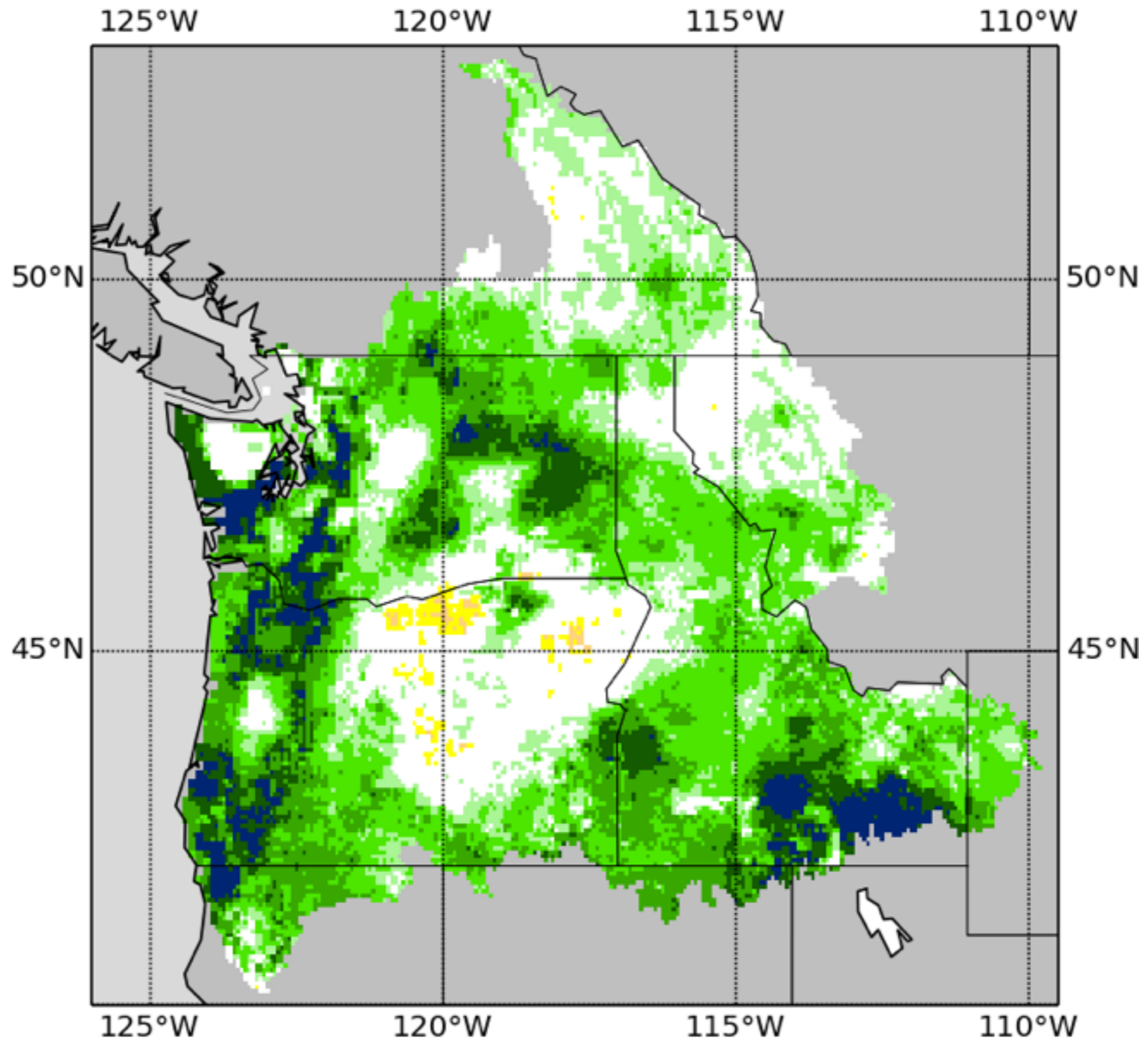
Accumulated Precipitation – SPOKANE INTL AP, WA

Click and drag to zoom to a shorter time interval; green/black diamonds represent subsequent/missing values



Total Moisture Percentile

2017--04--22



percentile

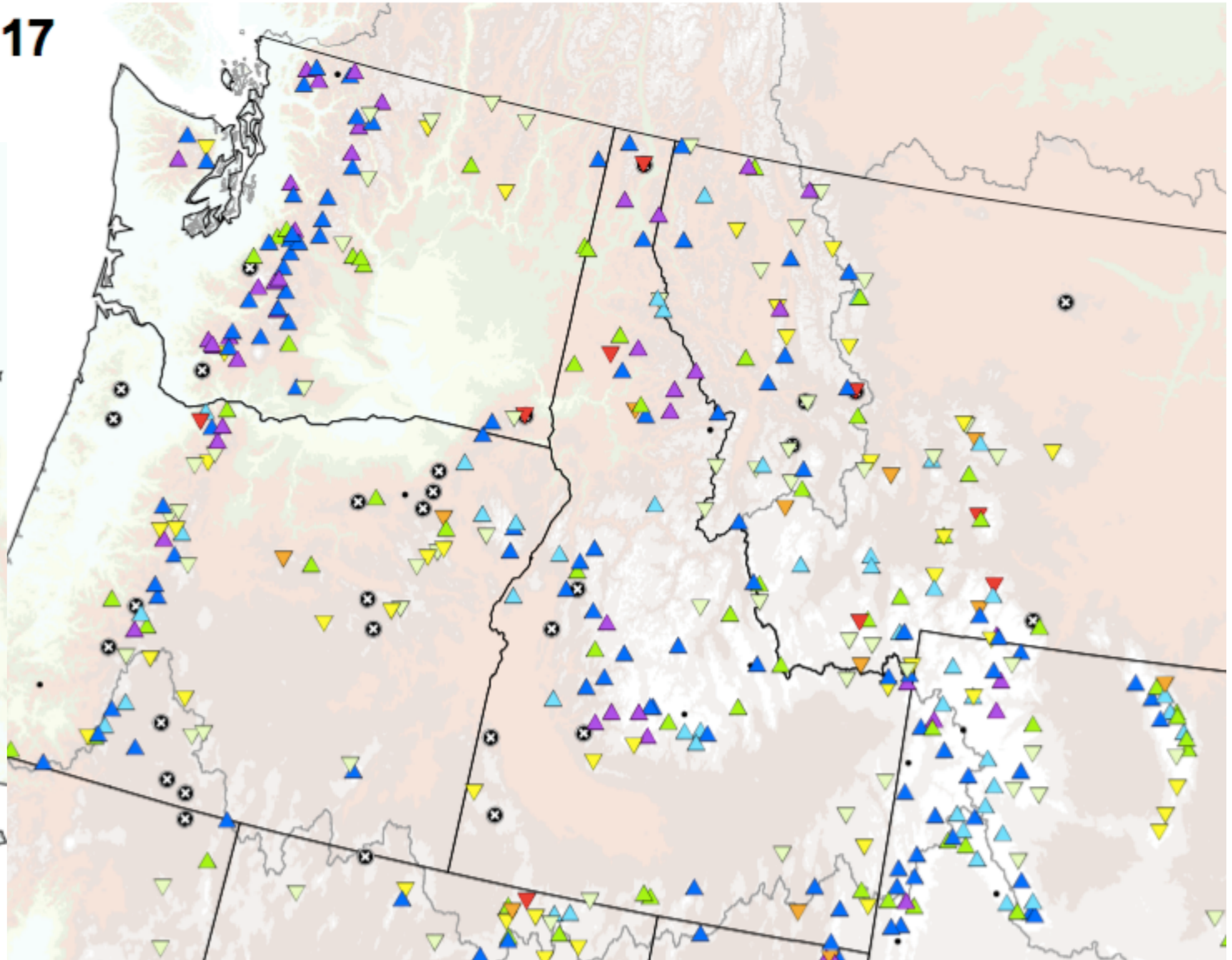
UW

SNOTEL Current Snow Depth (Inches)

Apr 23, 2017

Current Snow Depth (Inches)

- ▲ > 96"
- ▲ 61 - 96"
- ▲ 49 - 60"
- ▲ 37 - 48"
- ▼ 25 - 36"
- ▼ 13 - 24"
- ▼ 7 - 12"
- ▼ < 7"
- ⊗ Snow free
- Unavailable*
- ⚡ Data spike**

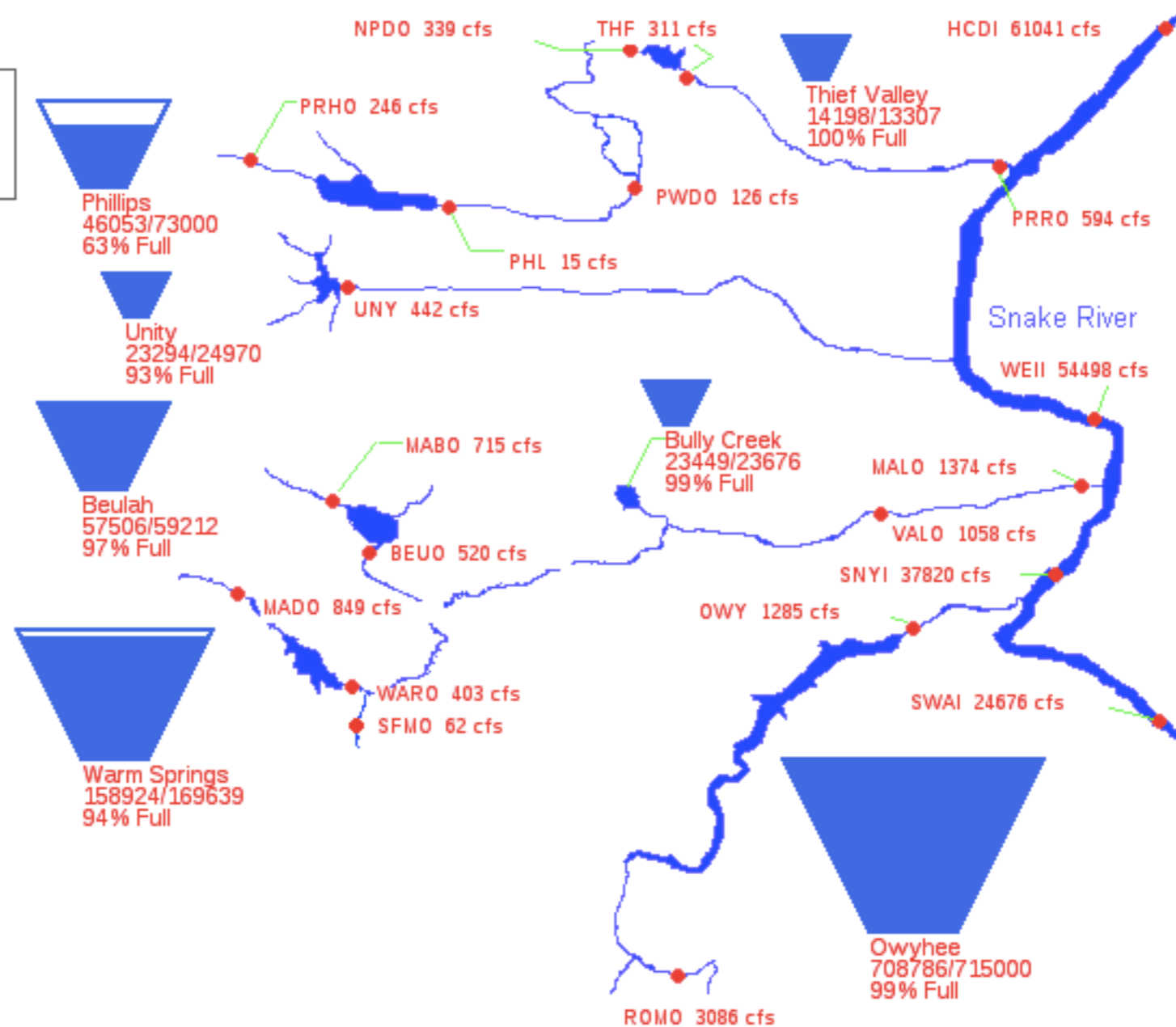
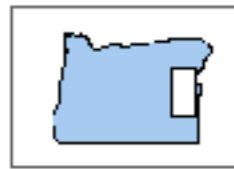


* Data unavailable at time of posting or snow depth sensor not available at site

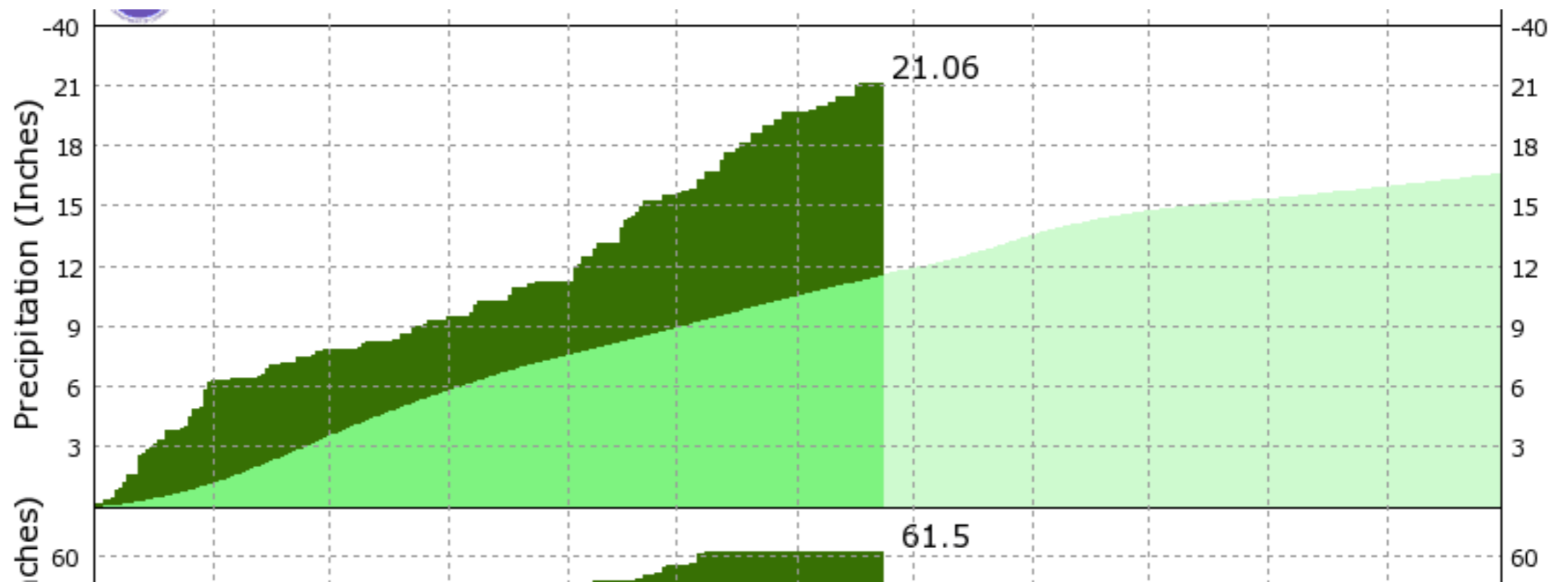
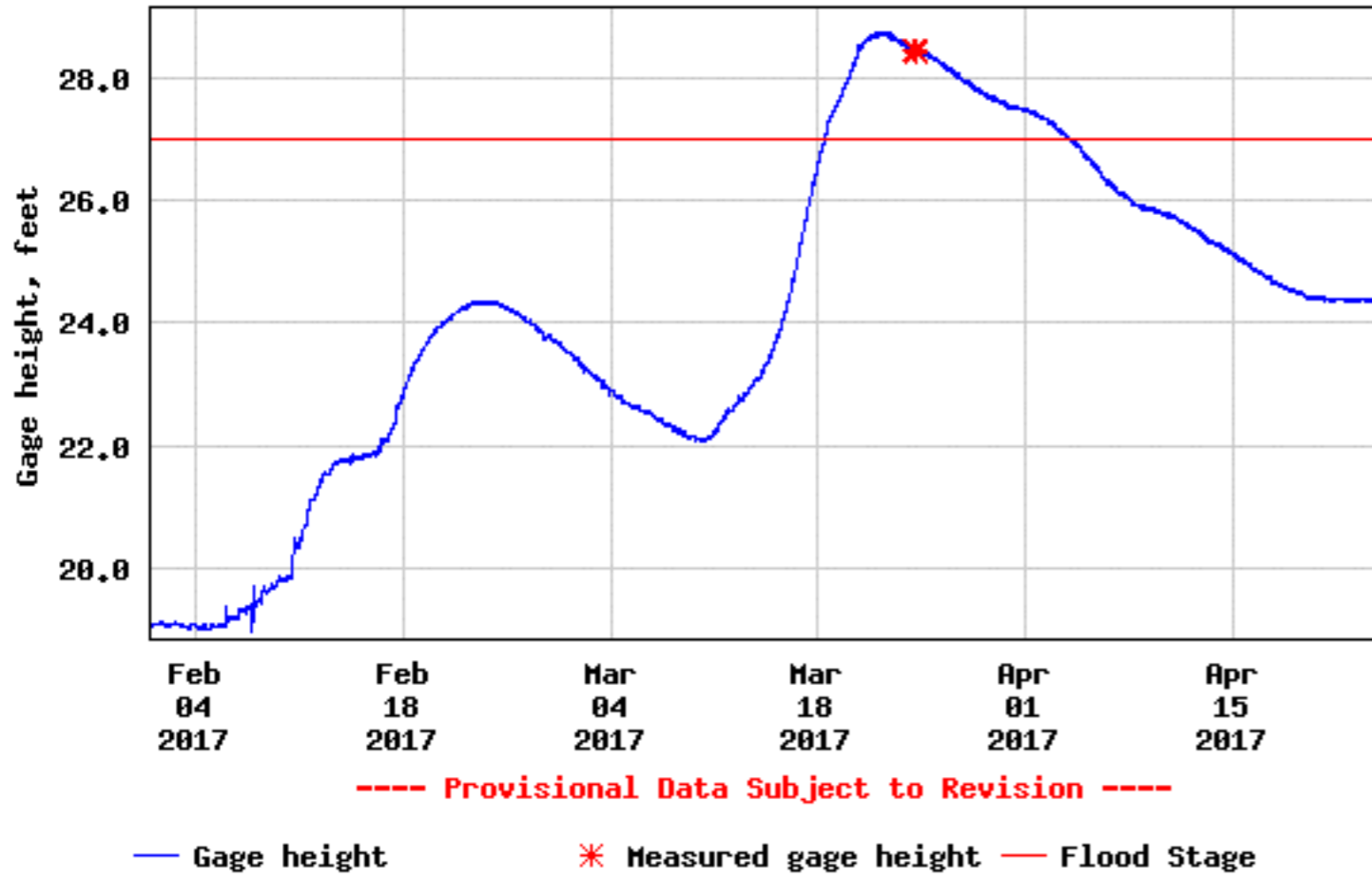
** A "data spike" is a gain or loss of more than 100 inches in 24 hours

US Bureau of Reclamation, Pacific Northwest Region Major Storage Reservoirs in Southeastern Oregon

04/23/2017



USGS 12422500 SPOKANE RIVER AT SPOKANE, WA



resources

NW climate toolbox: climatetoolbox.org

UW PNW Drought Monitor: [http://
www.hydro.washington.edu/forecast/monitor_west/](http://www.hydro.washington.edu/forecast/monitor_west/)

SERCC Climate Perspectives: [http://www.sercc.com/
climperregions](http://www.sercc.com/climperregions)

CIRC: pnwclimate.org