

Predictive Services

Tom Rolinski



What is Predictive Services?

Predictive Services is a national program operating out of the Geographic Area Coordination Centers throughout the United States.

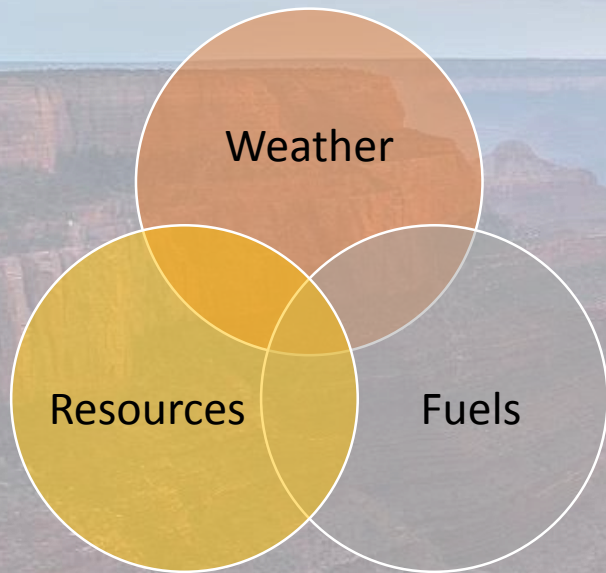


Predictive Services is comprised of:

- Meteorologists
- Fire Intelligence Coordinators
- Fire Behavior Analysts

What is Predictive Services?

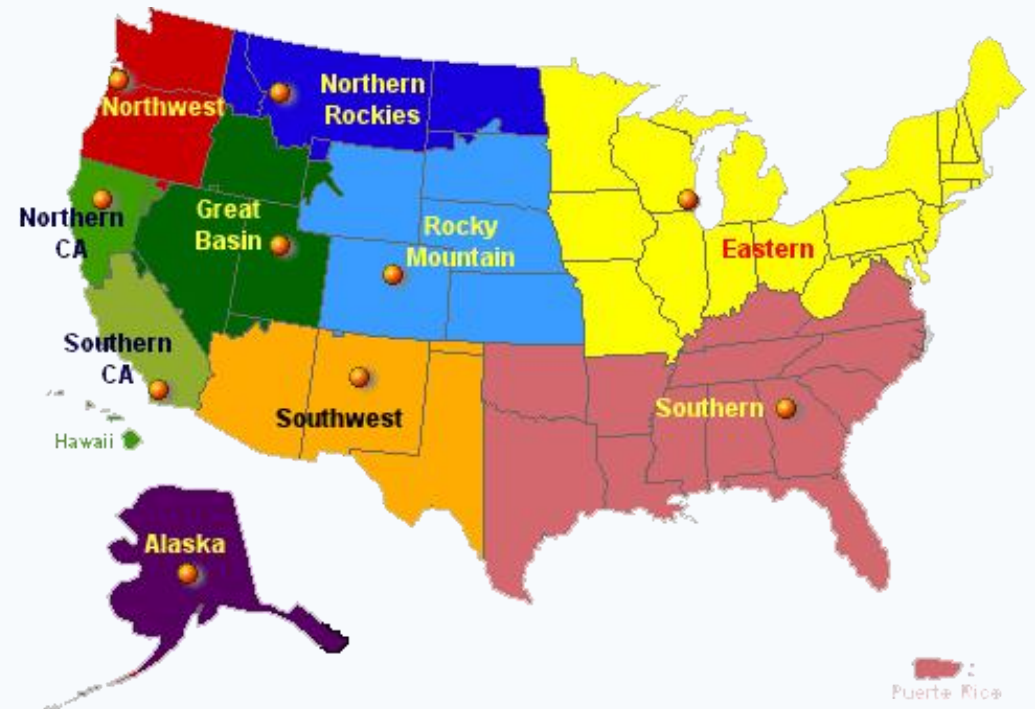
Predictive Services combines weather, fuels, and resource availability to provide a comprehensive look at fire potential (where and when large fires will occur).



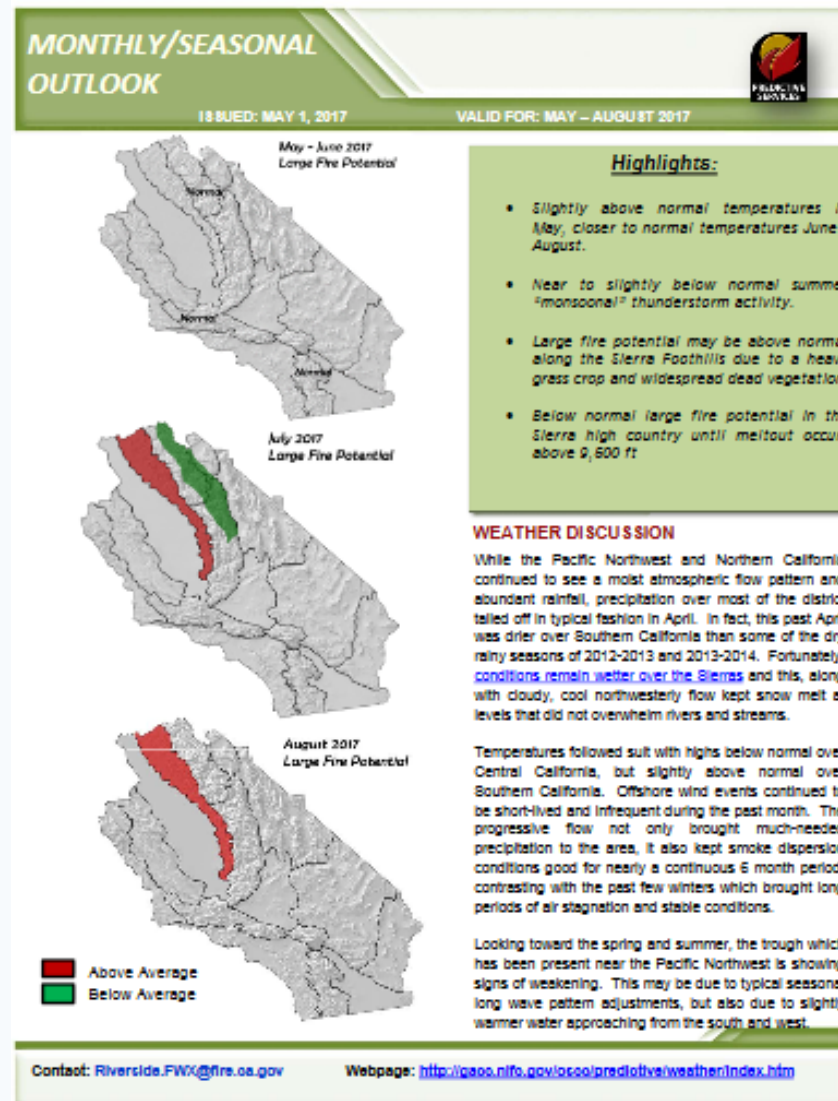
Predictive Services



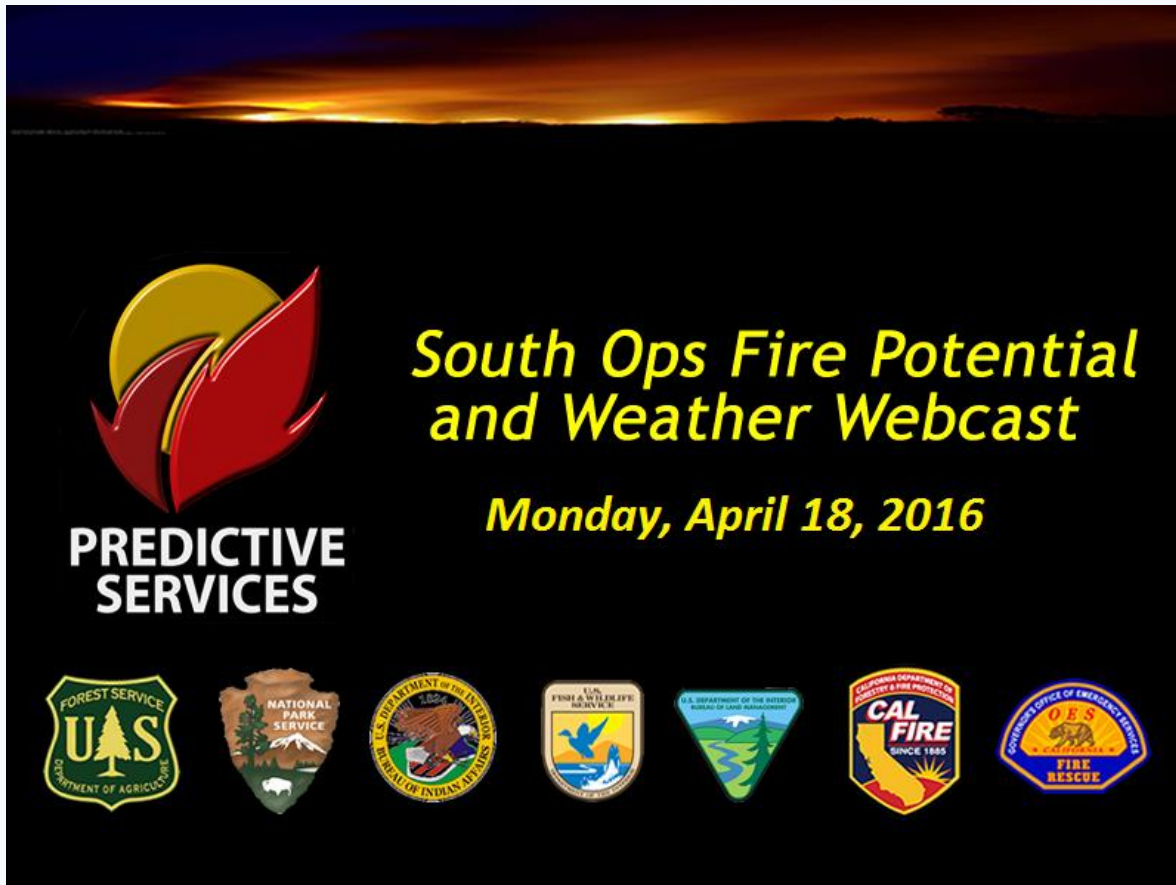
Geographic Area Coordination Centers (GACCs)



Monthly/Seasonal Outlook



Webcast



PREDICTIVE SERVICES

South Ops Fire Potential and Weather Webcast

Monday, April 18, 2016

FOREST SERVICE U.S. DEPARTMENT OF AGRICULTURE

NATIONAL PARK SERVICE

U.S. DEPARTMENT OF THE INTERIOR BUREAU OF INDIAN AFFAIRS

U.S. FISH & WILDERNESS SERVICE

U.S. DEPARTMENT OF THE INTERIOR BUREAU OF LAND MANAGEMENT

CAL FIRE CALIFORNIA DEPARTMENT OF FORESTRY & FIRE PROTECTION SINCE 1985

OES CALIFORNIA OFFICE OF EMERGENCY SERVICES FIRE RESCUE

The banner features a background image of a sunset over a dark landscape. On the left is a logo with a yellow sun and red leaves. Below the main title are seven agency logos: Forest Service, National Park Service, Bureau of Indian Affairs, U.S. Fish & Wildlife Service, Bureau of Land Management, CAL FIRE, and OES Fire Rescue.

**3-5 minute briefing
discussing weather,
fuels, and fire potential
over the next 5-7 days.**

WebPage

Predictive Services products

- Observations
- Satellite
- Radar
- NWS forecasts
- Fuels
- Intel
- And much more

<https://gacc.nifc.gov/oscc/predictive/weather/>

Southern California Geographic Coordination Center OSCC
An Interagency Incident Support Website throughout the Southern California Geographic Area

National | OSCC Home | R5 FAM | About Us | Site Disclaimer | Contact Us

Incident Information
California
National

Predictive Services
Intelligence
Weather
Outlooks
Fuels/Fire Danger
Logistics/Dispatch
Aviation
Crews
Equipment/Supplies
Overhead

Administrative
California Wildfire Coordination Group
Policy and Reports
Incident Business Practices
Safety Management
Software Applications
Training

Significant Fire Potential

Predictive Service Area Map

PSA Map
Day 1
Day 2
Day 3
Day 4
Day 5
Day 6
Day 7

Fuel Dryness:
Moist - Little to no risk of fires.
Dry - Low risk of large fires in the absence of a "High Risk" event.
Very Dry - Low/moderate risk of large fires in the absence of a "High Risk" event.

High Risk Days
At least a 20% chance of a "Large Fire" due to a combination of either "Dry" or "Very Dry" Fuel Dryness and an ignition trigger.
At least a 20% chance of a new "Large Fire" or significant growth on existing fires due to a combination of either "Dry" or "Very Dry" Fuel Dryness and a critical burn environment.

Current 7 Day Fire Potential

Area	Day 1	Day 2	Day 3	Day 4	Day 5	Day 6	Day 7
SC01	Moist	Dry	Very Dry	Very Dry	Very Dry	Very Dry	Very Dry
SC02	Moist	Dry	Very Dry	Very Dry	Very Dry	Very Dry	Very Dry
SC03	Moist	Dry	Very Dry	Very Dry	Very Dry	Very Dry	Very Dry
SC04	Moist	Dry	Very Dry	Very Dry	Very Dry	Very Dry	Very Dry
SC05	Moist	Dry	Very Dry	Very Dry	Very Dry	Very Dry	Very Dry
SC06	Moist	Dry	Very Dry	Very Dry	Very Dry	Very Dry	Very Dry
SC07	Moist	Dry	Very Dry	Very Dry	Very Dry	Very Dry	Very Dry
SC08	Moist	Dry	Very Dry	Very Dry	Very Dry	Very Dry	Very Dry
SC09	Moist	Dry	Very Dry	Very Dry	Very Dry	Very Dry	Very Dry
SC10	Moist	Dry	Very Dry	Very Dry	Very Dry	Very Dry	Very Dry
SC11	Moist	Dry	Very Dry	Very Dry	Very Dry	Very Dry	Very Dry
SC12	Moist	Dry	Very Dry	Very Dry	Very Dry	Very Dry	Very Dry
SC13	Moist	Dry	Very Dry	Very Dry	Very Dry	Very Dry	Very Dry
SC14	Moist	Dry	Very Dry	Very Dry	Very Dry	Very Dry	Very Dry
SC15	Moist	Dry	Very Dry	Very Dry	Very Dry	Very Dry	Very Dry
SC16	Moist	Dry	Very Dry	Very Dry	Very Dry	Very Dry	Very Dry

Alternate Version

Two Day Fire Potential Outlook Updated M-F
Santa Ana Wildfire Threat Index Updated Daily
Smoke Forecast Updated M-F
Webcast Updated M-F
Fuels Discussion Updated 5/4/17
Monthly/Seasonal Outlook Updated 5/1/17

Other Links

CURRENT CONDITIONS

OBSERVATIONS/RAWS:
Mesowest Table (similar to ROMAN)
Mesowest
Boise RAWS Collective
RAWS Archive (Southern California)
RAWS Archive (Central California)
Listing of all RAWS in the GACC by County
Soundings and Wind Profiler Links
Observations Selection Page

SATELLITE, RADAR, LIGHTNING:
NCAR Satellite Images
1km Visible Imagery (Southern CA)
1km Visible Imagery (Central CA)
GOES Satellite Imagery Selection Page
NWS CA Radar Composite
Radar (intellcast)
Radar Selection Page
BLM Lightning Data (Password Required)
Other Sources of Lightning Data

PRECIPITATION INFORMATION:
SNOTEL/Snow Reports by State (NRCS)
Radar-Derived Precipitation
Western Water Supply
Precipitation Info From CNRFC

FIRE AND SMOKE MONITORING PRODUCTS:
National FCAMMS Smoke Dispersion Model
Fires Detected by Satellite

OTHER GACC WEATHER INFORMATION

Santa Ana Wind Season Outlook **New**
Santa Ana Wildfire Threat Index Graphics
2-Day Fire Potential Outlook
CDF Burning Index
Conference Call Notification
National 7 Day Significant Fire Potential Map ..."refresh" for latest map
FDRA PAL Projections
Past Month's Weather and Fires Review
NWS Spot Forecast Request Page
Request a Spot Forecast OSCC Form

NOAA - NWS INFORMATION
National Weather Service Portal
CA Red Flag Warnings/Fire Weather Watches

AREA FORECAST DISCUSSIONS

Choose a forecast office: (All others)

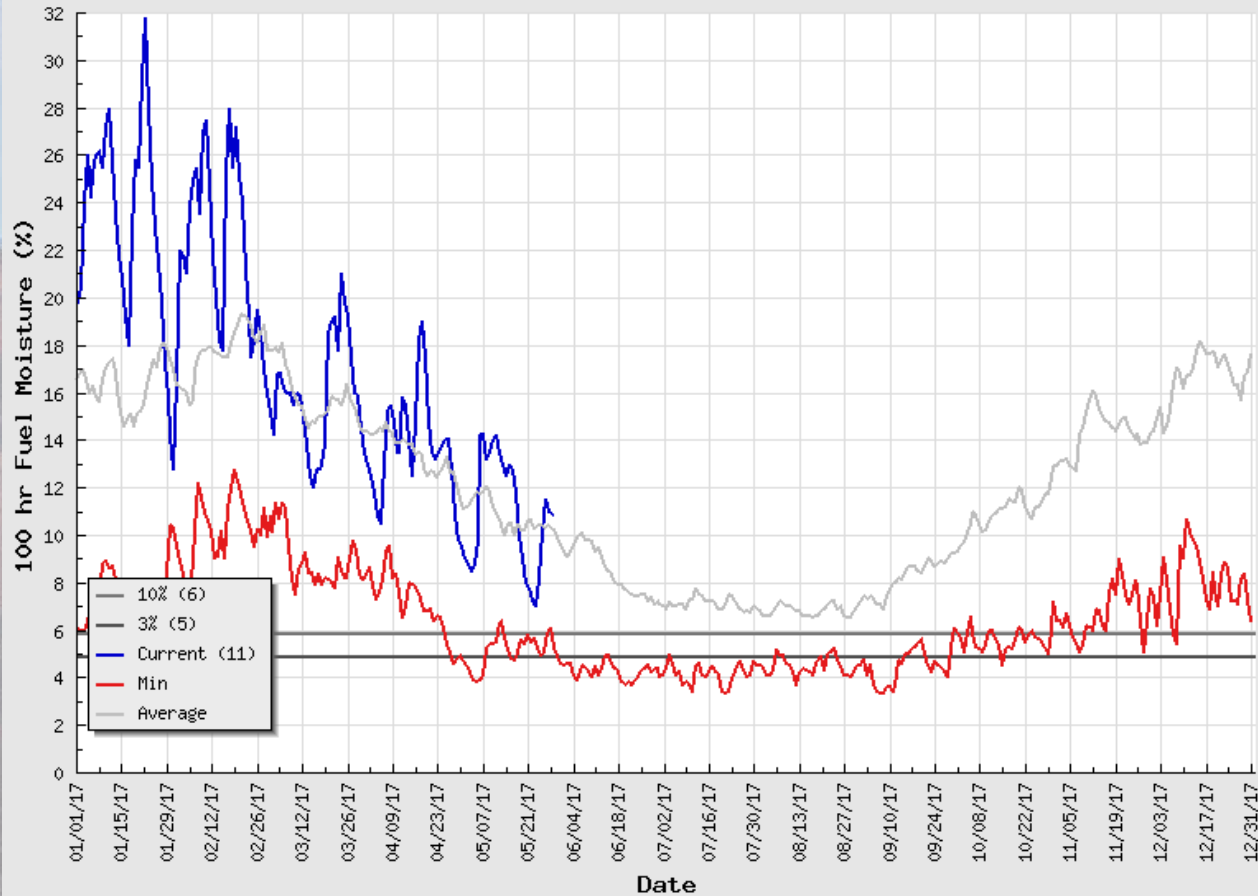
CLIMATOLOGY/DROUGHT
OSCC/UCR Riverside Station Data
Past 7 days to 2 years CA Temp/Precip (DRI)
Drought Monitor (University of Nebraska)
Monthly Climate Data Western U.S. (DRI)
Climate Prediction Center (CPC)
Western Region Climate Center
CEFA Assessment Products
Palmer Drought Index (PDI)
Keetch/Byrum Drought Index (KBDI)
OSCC Drought Page

Fuels



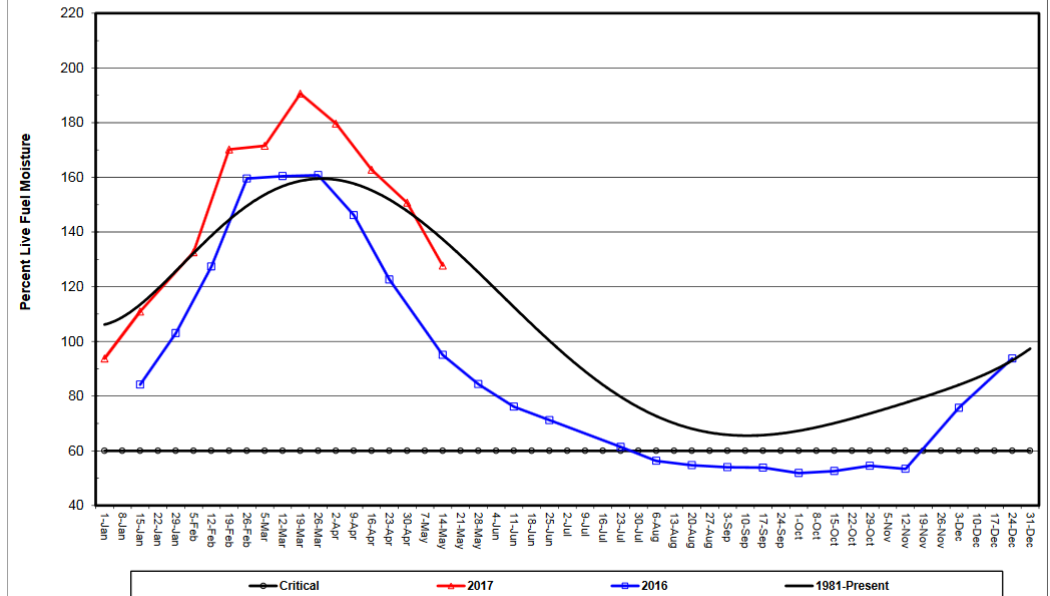
SC06 - Central Coast Interior

Valid Date: 29-May-2017



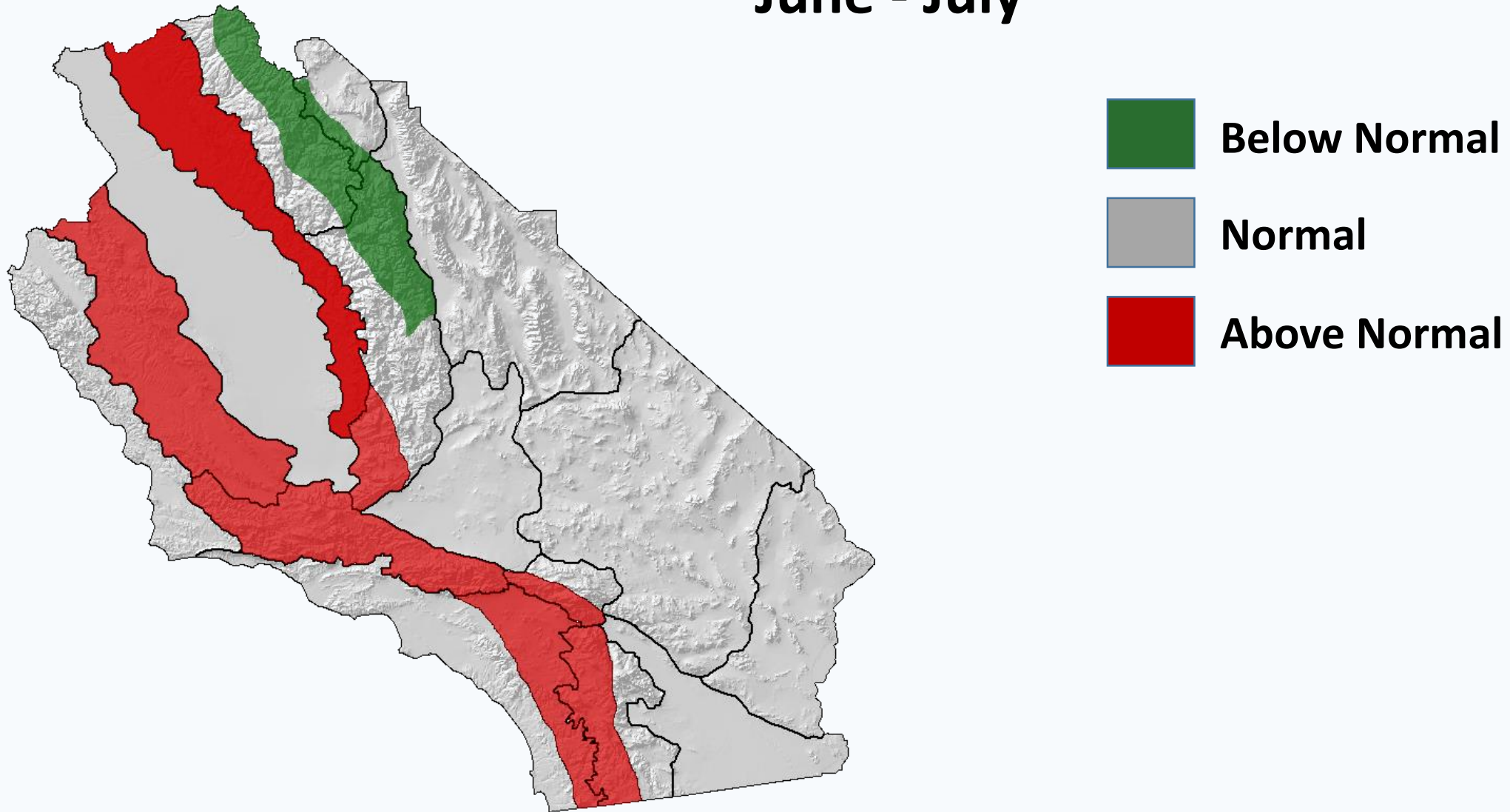
Vegetation Management Program Live Fuel Moisture 1981-2017

All Areas, All Fuels - Chamise, Ceanothus, Sages, Sagebrush



Large Fire Potential

June - July



Summary

- A significant grass crop this spring will continue to result in a burst in fire activity among the light flashy during the next couple of months. Most of these fires will not result in a significant drain on regional resources, but could require **high resource demand at the local level**. Team deployments will not likely with these incidents as most of these fires, while fast moving, should only last 1 to 2 burning periods.
- Live fuel moisture is above average for this time of year and will likely stay above average or close to average throughout much of the fire season. This means that **significant fire activity** (apart from the initial grass fire surge) **will be slow to develop**. Large fire activity within the heavier fuels may not start until later in **July or August**. However, heavier fuel loading and more decadent, dead material could result in significant fires late in the season.
- There is much uncertainty concerning the Monsoon. It is still too early to tell how strong the monsoon will be but a normal start time of early July is expected.
- Deserts may see a little more fire activity than normal due to greater fuel loading this year.
- With the combination of a robust grass crop and significant tree mortality, the Sierra Foothills in the 3-6 thousand foot elevation will be the most likely area for large fire activity this summer.

Tom Rolinski

*USDA Forest Service Senior
Meteorologist
and
Predictive Services Program
Manager*



**Southern California Geographical
Coordination Center**
2524 Mulberry Street
Riverside, CA 92501

Office: 951-782-4849
Cell: 909-285-7717
thomasrolinski@fs.fed.us



Thank You!